



HEALTHY WATERSHEDS, HIGH-QUALITY WATERS

PROTECTION PRIORITIES



MAP GUIDANCE

The following pages display the modelling results for the HUC12's (Hydrological Unit Code) as they relate to Wisconsin's larger HUC6 watersheds. Watershed Protection Priorities are the top 30% healthiest HUC12 watersheds, based on the Ecological Health Score. These protection priorities are identified at statewide and major drainage basin (i.e. HUC6) scales.

Contents:

Pages	HUC 6 Watershed Code – Major Drainage Basin Name
3-4	Statewide
5-6	040102 & 040201 – St. Louis & SC Lake Superior
7-8	040103 – SW Lake Superior
9-10	040301 – NW Lake Michigan
11-12	040302 – Fox
12-13	040400 – SW Lake Michigan
14-15	070300 – St. Croix
16-17	070400 – Upper Mississippi-Black-Root
18-19	070500 – Chippewa
20-21	070600 – Upper Mississippi-Maquoketa-Plum
22-23	070700 – Wisconsin
24-25	070900 – Rock
26-27	071200 – Upper Illinois

HUC 6 Watershed Protection Priorities:

Left, Even-Numbered Page: Each HUC6 has a set of 4 maps:

- Top 30% Ecological Health Score (healthiest watersheds) [top left]
- Opportunity Score of healthiest watersheds [top right]
- Vulnerability score of healthiest watersheds [bottom left]
- Protection Potential of healthiest watersheds [bottom right]

The protection potential is a product of the first 3 modelling results:

(Ecological Health Score + Opportunity Score) – Vulnerability score

Right, Odd-Numbered Page: Dashboard

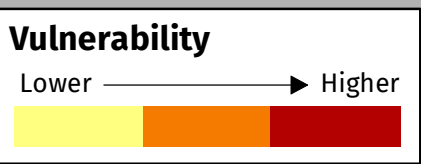
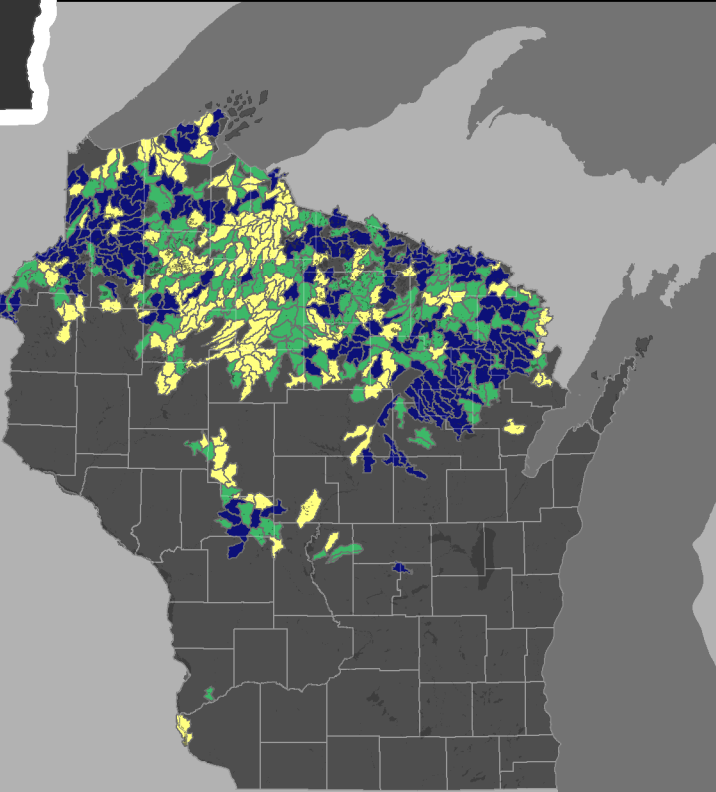
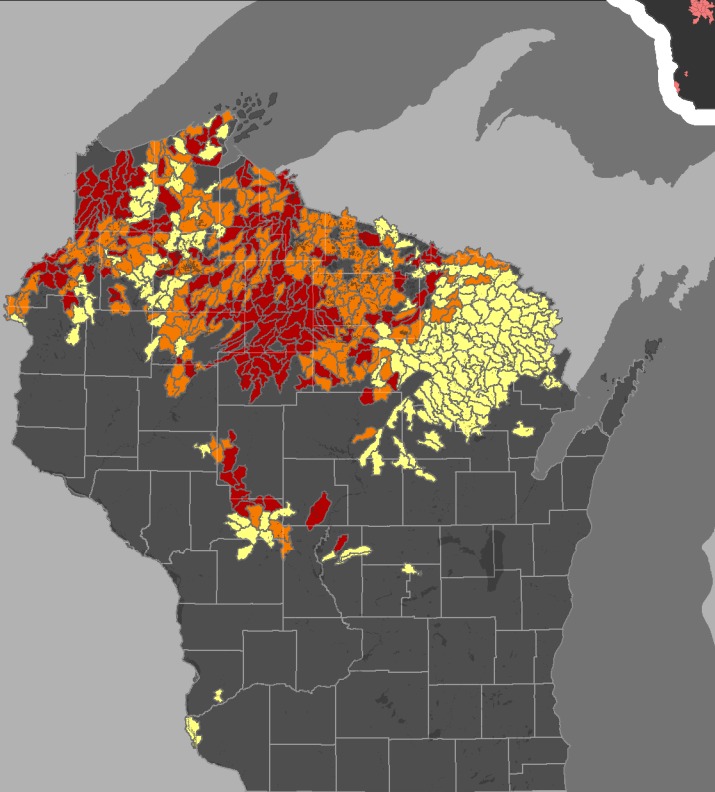
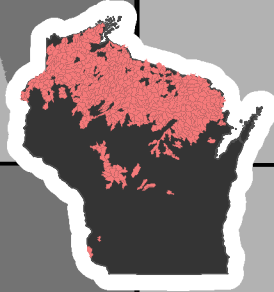
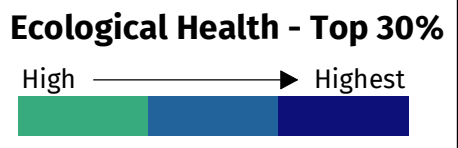
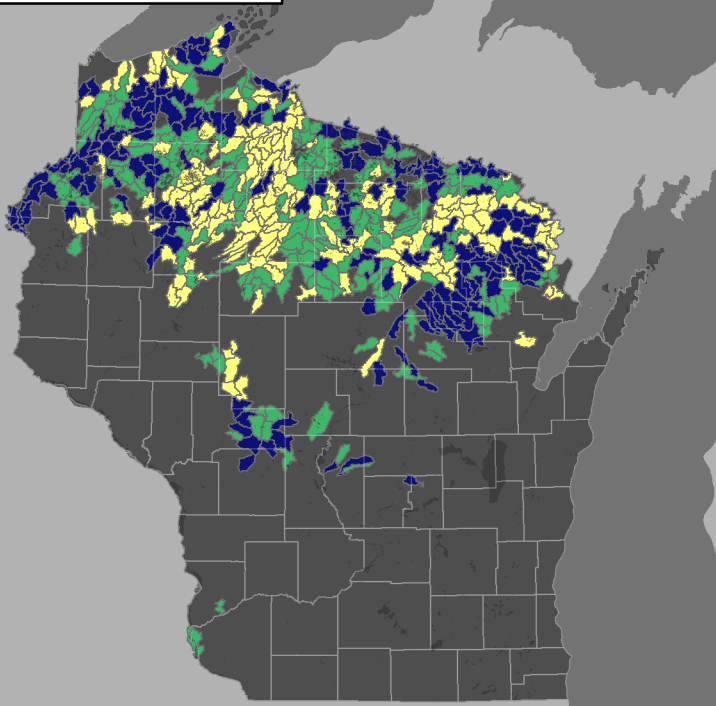
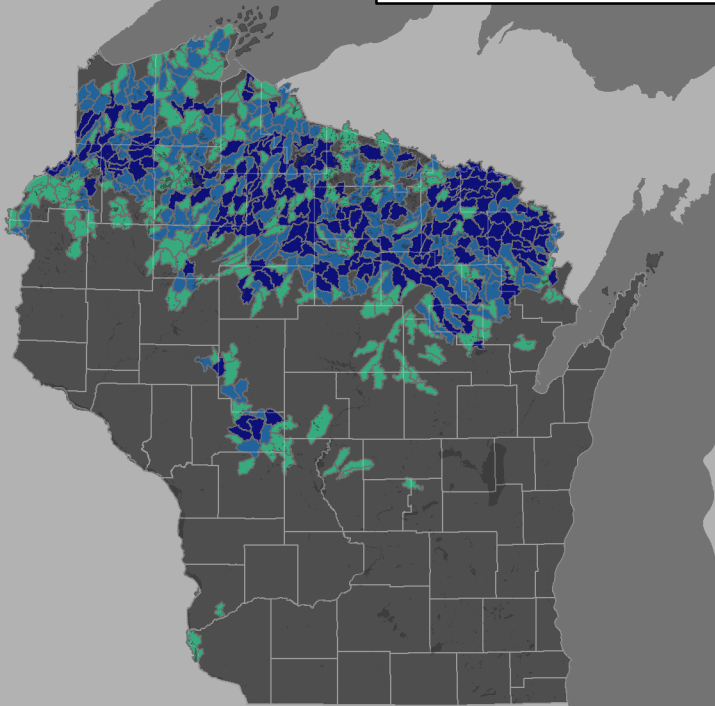
Each HUC6 also has a “dashboard” page listing the HUC12 subwatersheds, ranked in order of Ecological Health Score and a map that includes the high-quality waters. The Protection Priority Score and the numbers of healthy lakes/rivers/wetlands found within each HUC 12 watershed priority are also listed in the table.

For more information, including details on indicators used to formulate the maps and scores, or to access the web viewer for higher resolution data, go to:

<https://dnr.wisconsin.gov/topic/SurfaceWater/HQW.html>

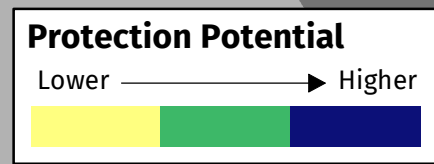
Watershed Protection Priorities

Wisconsin - 2021



The top 30% healthiest watersheds are first identified, then the opportunities and vulnerability are overlaid upon those healthiest watersheds to identify the protection potential of the healthiest watersheds.

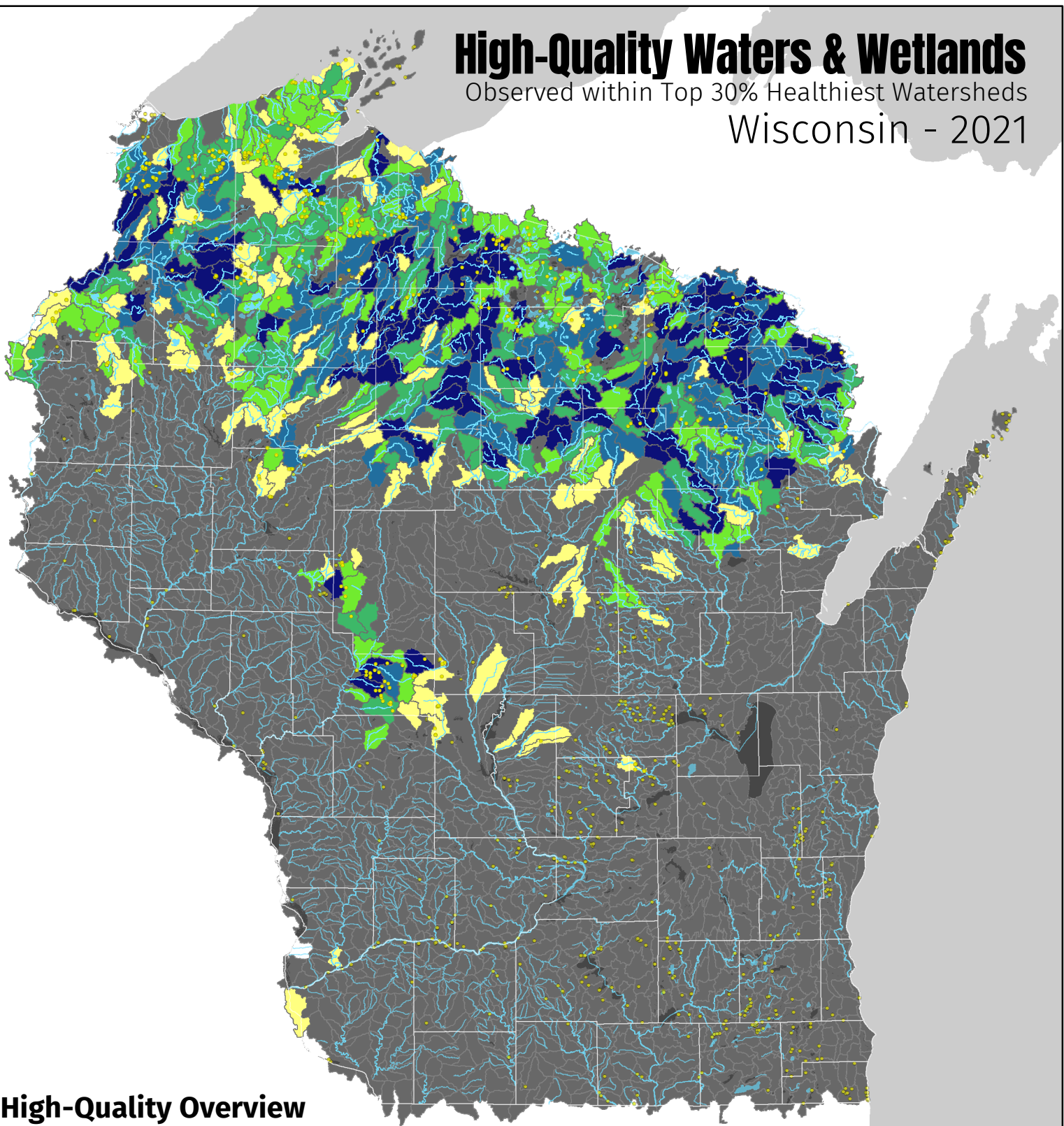
Protection Potential = (Eco + Opp) - Vulnerability



High-Quality Waters & Wetlands

Observed within Top 30% Healthiest Watersheds

Wisconsin - 2021



High-Quality Overview

524 High-Quality Streams within the Healthiest Watersheds
1,341 High-Quality Streams Statewide

39%

436 High-Quality Lakes within the Healthiest Watersheds
826 High-Quality Lakes Statewide

53%

469 High-Quality Wetlands within the Healthiest Watersheds
1,084 High-Quality Wetlands Statewide

43%

Watershed Features

- High-Quality Wetlands
- High-Quality Waters

Ecological Health Score
Top 30% Healthy Watersheds

Healthiest

0 12.5 25 50 Miles



Watershed Protection Priorities

St Louis & SC Lake Superior - HUC6 (040102 & 040201)

Pokegama River - St. Louis

SC Lake Superior

S. Branch Presque Isle R. Cisco Lake

Pokegama River - St. Louis

SC Lake Superior

S. Branch Presque Isle R. Cisco Lake

Ecological Health - Top 30%

High Highest



Opportunities

Lower Higher



*Only WI portion of HUC6s depicted in map

Pokegama River - St. Louis

SC Lake Superior

S. Branch Presque Isle R. Cisco Lake

Pokegama River - St. Louis

SC Lake Superior

S. Branch Presque Isle R. Cisco Lake

Vulnerability

Lower Higher



The top 30% healthiest watersheds are first identified, then the opportunities and vulnerability are overlaid upon those healthiest watersheds to identify the protection potential of the healthiest watersheds.

$$\text{Protection Potential} = (\text{Eco} + \text{Opp}) - \text{Vulnerability}$$

Protection Potential

Lower Higher



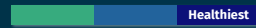


RANK & MAP ID	HUC12 NUMBER	HUC12 NAME	ECOLOGICAL HEALTH SCORE	PROTECTION PRIORITY SCORE	HIGH-QUALITY LAKES	HIGH-QUALITY RIVERS	HIGH-QUALITY WETLANDS
1	040201010303	S. Br. Presque Isle R. - SC Lake Superior	82.7	64.8	7		2
2	040201020101	Cisco Lake - SC Lake Superior	82.4	63.1	3		
3	040102011602	Pokegama R. - St. Louis	73.4	51.9			1

- 10 High-Quality Lakes in Watersheds
- 0 High-Quality Streams in Watersheds

Watershed Features

Ecological Health Score & ID



- High Quality Wetlands
- High Quality Waters

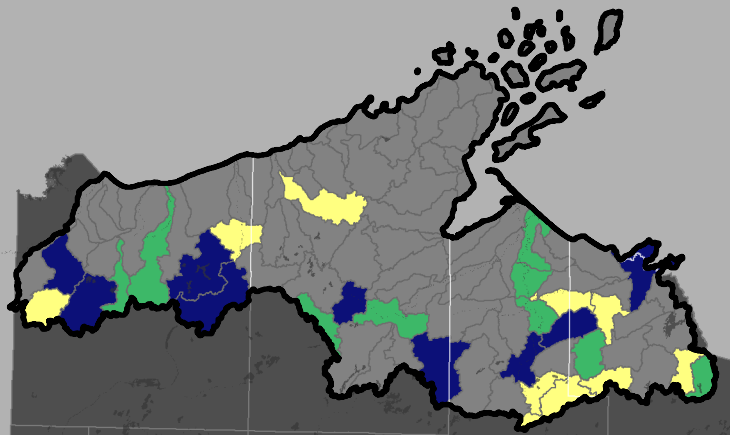
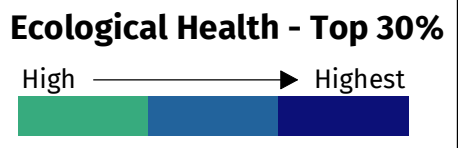
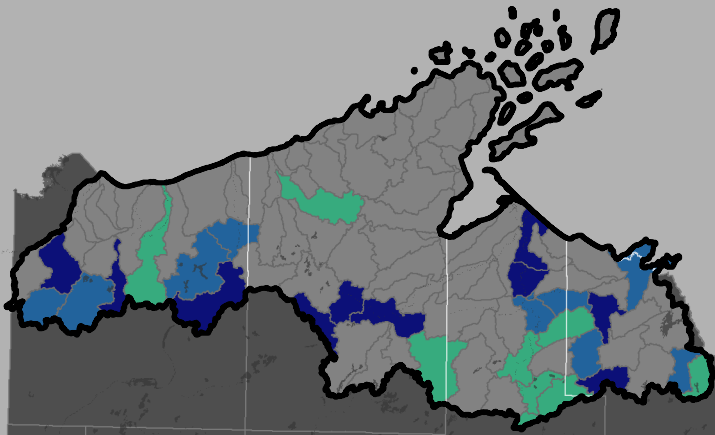
The top 30% healthiest watersheds in the HUC6 were selected to identify watershed protection priorities based on the ecological health score. High quality lakes and streams (based on waterbody identification code - WBIC), and high quality wetlands were then summed within each of the watersheds.

Watersheds are ranked and color-coded by ecological health score.

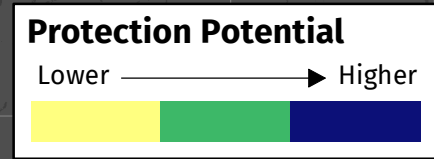
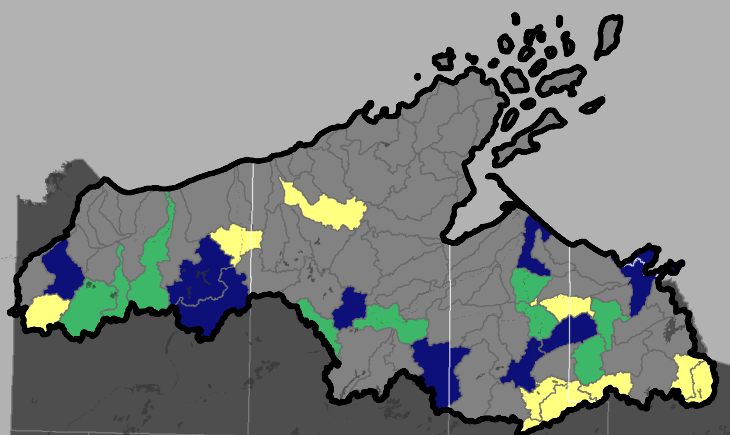
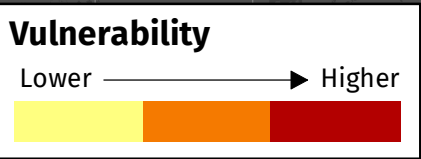
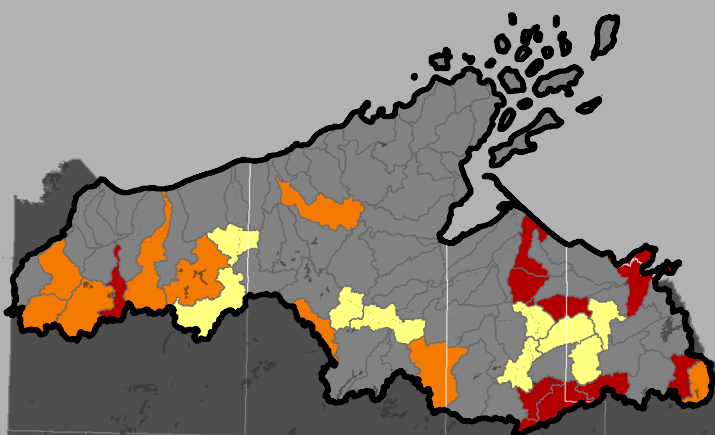


Watershed Protection Priorities

SW Lake Superior - HUC6 (040103)



*Only WI portion of SW Lake Superior HUC6 depicted in map



The top 30% healthiest watersheds are first identified, then the opportunities and vulnerability are overlaid upon those healthiest watersheds to identify the protection potential of the healthiest watersheds.

Protection Potential = (Eco + Opp) - Vulnerability



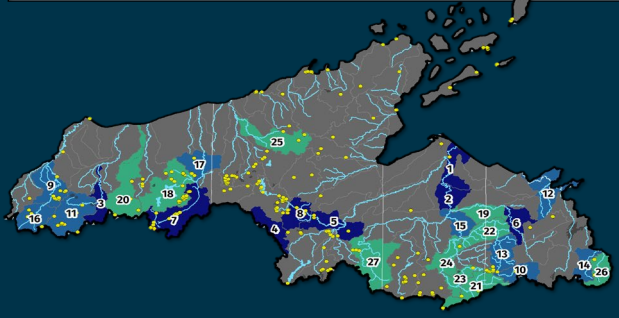
Watershed Protection Priorities



SW Lake Superior - HUC 040103

RANK & MAP ID	HUC12 NUMBER	HUC12 NAME	ECOLOGICAL HEALTH SCORE	PROTECTION PRIORITY SCORE	HIGH-QUALITY LAKES	HIGH-QUALITY RIVERS	HIGH-QUALITY WETLANDS
1	040103020705	Bad R.-Frontal Lake Superior	95	63.3			1
2	040103020702	Cameron's Creek-Bad R.	94.7	62.3			1
3	040103010606	Middle Amnicon R.	92.4	62.5			1
4	040103020601	Flynn Lake	92.3	62.4			1
5	040103020607	Bibon Marsh-White R.	91.6	63.1		2	3
6	040103020504	Sullivan Creek-Potato R.	89.8	60.6		1	
7	040103010702	Upper Bois Brule R.	89.6	72.4		4	11
8	040103020603	Hanson Creek-White R.	89.2	67.8		3	3
9	040103010303	Lower Black R.	88.5	65.0		3	9
10	040103020201	Upper Tyler Forks	88.5	57.0		1	2
11	040103010604	Upper Amnicon R.	88.4	63.2		1	12
12	040103020109	Montreal R.	88.3	63.9		3	
13	040103020202	Middle Tyler Forks	88.1	60.3		10	
14	040103020101	Laymans Creek	87.9	56.9		1	
15	040103020701	040103020701-Bad R.	87.9	60.2		1	
16	040103010302	Middle Black R.	87.8	57.7		2	4
17	040103010704	Middle Bois Brule R.	87.5	59.8		1	1
18	040103010701	Nebagamon Creek	87.2	64.8	2	2	19
19	040103020506	Potato R.	87.2	57.8		1	
20	040103010603	Middle R.	87	61.4		3	
21	040103020301	Headwaters Bad R.	86.9	56.7			6
22	040103020203	Lower Tyler Forks	86.4	65.2		8	
23	040103020303	Minnow Creek-Bad R.	86.3	57.1	3	2	1
24	040103020305	Hardscrable Creek-Bad R.	86.1	64.4		2	2
25	040103010805	East Fork Iron R.	85.9	59.0		2	2
26	040103020102	Pine Lake-Montreal R.	85.9	59.2		1	2
27	040103020402	Headwaters Marengo R.	85.9	64.1		3	3

- 5** High-Quality Lakes in Top 30% Healthiest Watersheds
- 15** High-Quality Lakes in HUC6 Watershed
- 33%** High-Quality Lakes are within the Healthiest Watersheds
- 55** High-Quality Streams in Top 30% Healthiest Watersheds
- 129** High-Quality Streams in HUC6 Watershed
- 43%** High-Quality Streams are within the Healthiest Watersheds



Watershed Features

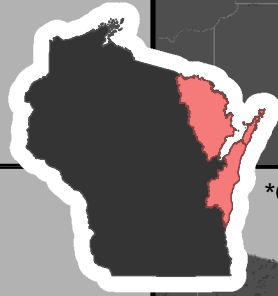
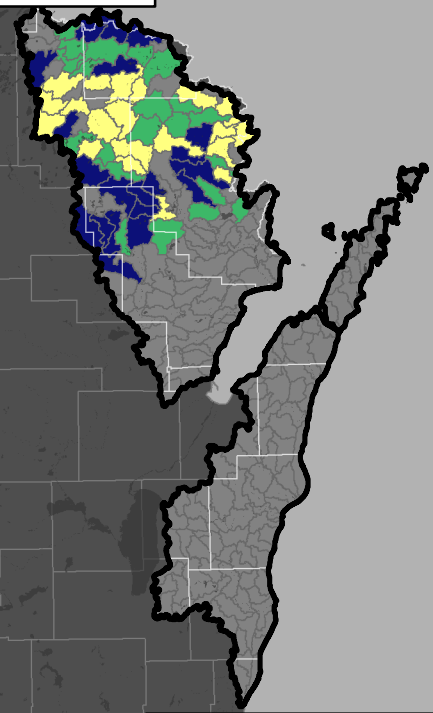
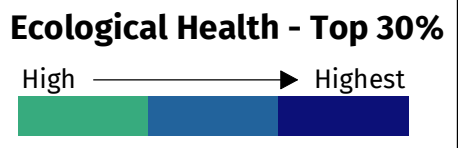
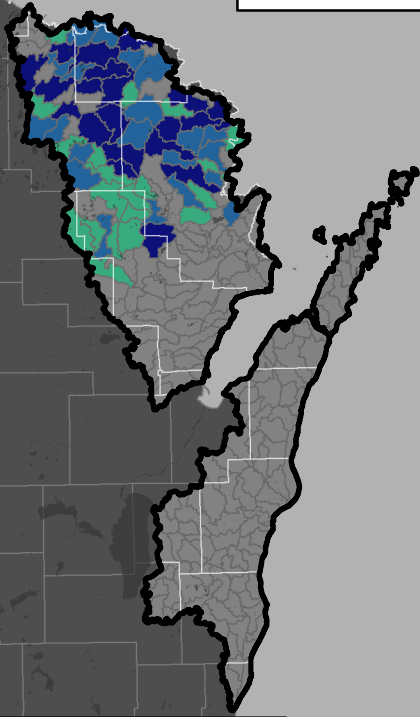
- Ecological Health Score & ID
- Healthiest
- High Quality Wetlands
- High Quality Waters

The top 30% healthiest watersheds in the HUC6 were selected to identify watershed protection priorities based on the ecological health score. High quality lakes and streams (based on waterbody identification code - WBIC), and high quality wetlands were then summed within each of the watersheds.

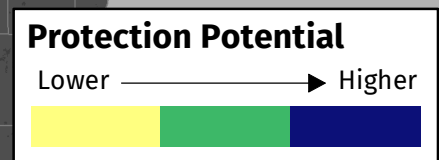
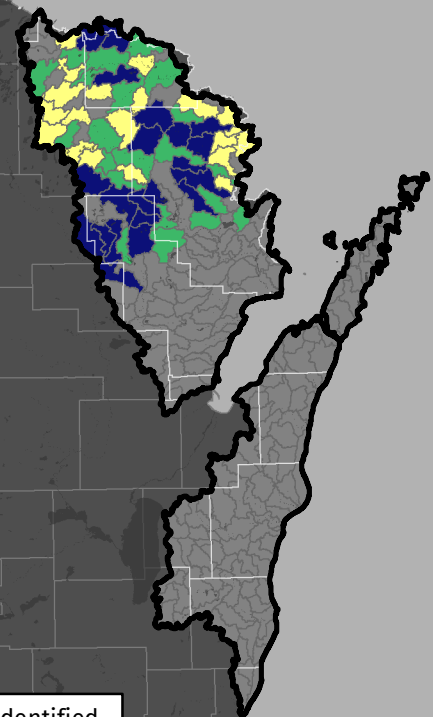
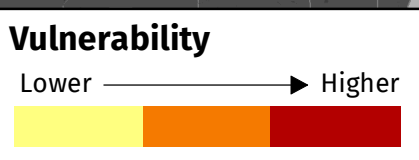
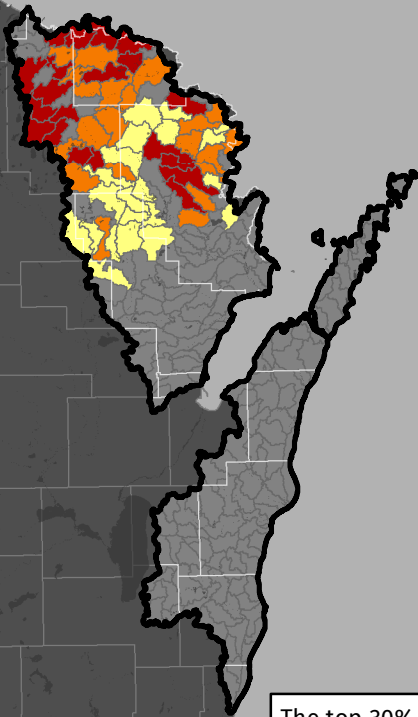
Watersheds are ranked and color-coded by ecological health score.

Watershed Protection Priorities

NW Lake Michigan - HUC6 (040301)



*Only WI portion of NW Lake Michigan HUC6 depicted in map



The top 30% healthiest watersheds are first identified, then the opportunities and vulnerability are overlaid upon those healthiest watersheds to identify the protection potential of the healthiest watersheds.

Protection Potential = (Eco + Opp) - Vulnerability



RANK & MAP ID	HUC12 NUMBER	HUC12 NAME	ECOLOGICAL HEALTH SCORE	PROTECTION PRIORITY SCORE	HIGH-QUALITY LAKES	HIGH-QUALITY RIVERS	HIGH-QUALITY WETLANDS
1	040301050207	Catwillow Creek-Peshtigo R.	98	62.7		1	1
2	040301040301	Headwaters Peshtigo Brook	97.5	65.7			
3	040301080603	South Branch Pike R.	95.6	62.8		1	
4	040301080104	Middle Popple R.	94.8	61.4		2	2
5	040301050208	Swede John Creek-Peshtigo R.	94.2	62.6		2	1
6	040301080107	Lower Popple R.	94.1	62.3		3	
7	040301050206	Armstrong Creek	93.8	61.3			1
8	040301050104	Lower Rat R.	93.5	61.6		1	
9	040301080102	Upper Popple R.	93.4	61.8		1	
10	040301080207	Wakefield Creek-Pine R.	93.4	64.7	1	2	3
11	040301080505	Sullivan Creek-North Branch Pemebon.	93.3	61.2			1
12	040301080504	North Branch Pemebonwon R.	93	60.8			
13	040301080204	Stevens Creek	92.7	63.1		2	
14	040301080905	Wausaukee R.	92.7	69.2		3	
15	040301080605	Middle North Branch Pike R.	92.5	68.1		4	
16	040301080502	South Branch Pemebonwon R.	92.3	67.8		2	
17	040301080506	Pemebonwon R.	92.3	61.9		1	
18	040301080106	Woods Creek	92.1	67.4	1	5	3
19	040301080202	McDonald Creek-Pine R.	91.9	66.8		3	
20	040301060503	Brule Island Dam-Brule R.	91.8	67.0		2	1
21	040301050205	Kersten Creek-Peshtigo R.	91.7	59.0		2	
22	040301080607	Pike R.	91.5	60.8		2	
23	040301050302	Middle Inlet	91.3	67.9	1	3	
24	040301060309	Wisconsin Creek-Brule R.	91.3	68.1		1	
25	040301050202	South Branch Peshtigo R.	91.1	60.1		1	2
26	040301080209	Halls Creek-Pine R.	91.1	65.3	2	2	
27	040301060502	Riley Creek-Brule R.	91	68.0		1	
28	040301040103	First South Branch Oconto R.	90.9	72.2	2	1	1
29	040301080208	Keys Lake-Pine R.	90.9	61.9	1	1	
30	040301080709	Miscauno Creek	90.9	61.2		1	
31	040301050406	Thunder R.	90.7	62.2	1	3	3
32	040301050203	Otter Creek	90.6	66.4		1	
33	040301080205	Kingstone Creek-Pine R.	90.2	61.9		1	
34	040301080601	Headwaters South Branch Pike R.	89.9	67.3		2	
35	040301080604	Upper North Branch Pike R.	89.9	67.7		5	
36	040301050102	Upper Rat R.	89.8	59.5		1	
37	040301040203	Torpee Creek-North Branch Oconto R.	89.6	67.7		1	1
38	040301080602	Little South Branch Pike R.	89.6	67.9		3	
39	040301080606	Lower North Branch Pike R.	89.6	67.7	1	1	1
40	040301050303	Upper Inlet	89.2	63.2		1	
41	040301080206	Fay Lake Outlet	89.2	62.8	2		
42	040301080904	Wolf Creek	89.1	60.2		1	
43	040301040105	South Branch Oconto R.	88.8	71.0		1	
44	040301050401	Otter Creek	88.8	67.0		1	
45	040301060306	Allen Creek	88.8	62.0		1	
46	040301080105	Lamon Tanguie Creek	88.8	61.2		2	
47	040301040204	Knowles Creek-North Branch Oconto R.	88.6	71.7	6	4	2
48	040301040205	Waupee Creek	88.5	71.9	3	3	1
49	040301040102	Headwaters South Branch Oconto R.	88.2	74.3	1	3	
50	040301050404	North Fork Thunder R.	88	69.6		5	
51	040301050101	Headwaters Rat R.	87.9	61.1	1	1	1
52	040301050201	North Branch Peshtigo R.	87.9	58.9			
53	040301050402	Caldron Falls Reservoir-Peshtigo R.	87.9	69.0	1	1	
54	040301040101	Second South Branch Oconto R.	87.7	70.4	1	1	
55	040301080501	Headwaters South Branch Pemebonwon R.	87.7	66.6		1	
56	040301050405	South Fork Thunder R.	87.5	68.3		3	
57	040301050304	Lower Middle Inlet	86.7	65.7		2	
58	040301080903	Holmes Creek-Menominee R.	86.4	66.0		1	
59	040301080710	Chalk Hill Dam-Menominee R.	86.1	58.7		1	
60	040301050103	Middle Rat R.	86	64.5		2	
61	040301040206	Chute Pond-North Branch Oconto R.	85.6	62.1		3	
62	040301050301	Upper Middle Inlet	85.4	65.7		3	

27 High-Quality Lakes in Top 30% Healthiest Watersheds

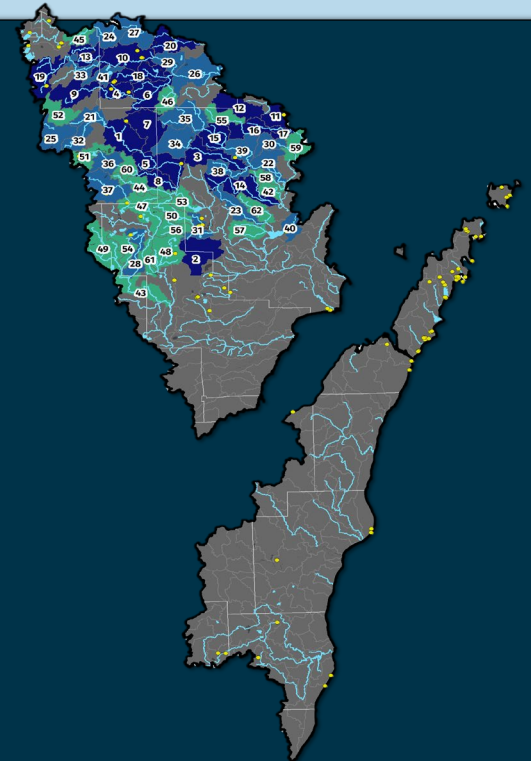
54 High-Quality Lakes in HUC6 Watershed

50% High-Quality Lakes are within the Healthiest Watersheds

95 High-Quality Streams in Top 30% Healthiest Watersheds

165 High-Quality Streams in HUC6 Watershed

58% High-Quality Streams are within the Healthiest Watersheds



Watershed Features

Ecological Health Score & ID



● High Quality Wetlands

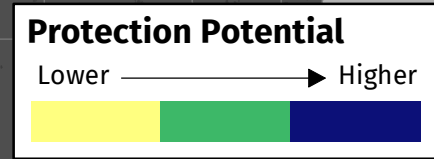
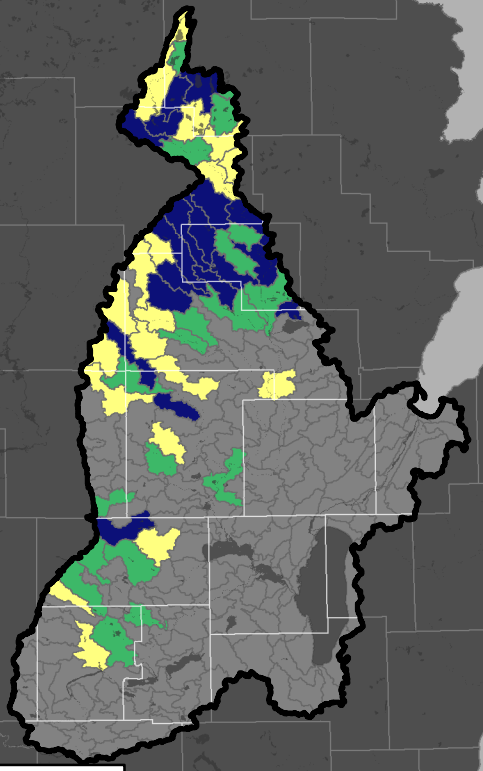
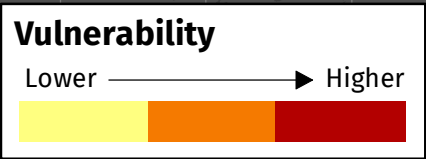
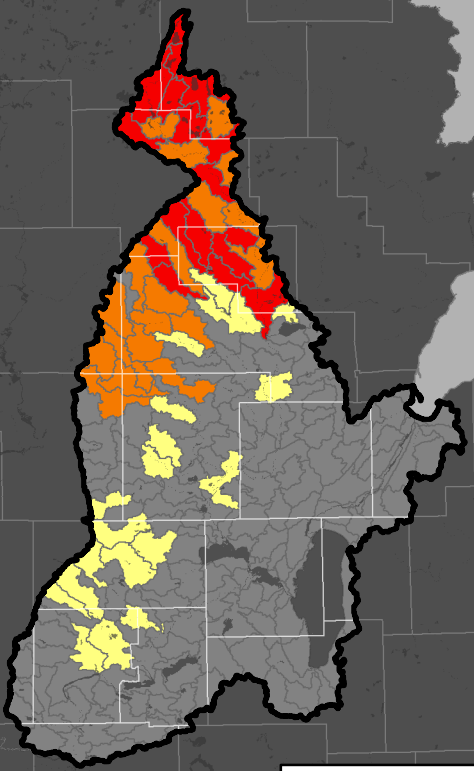
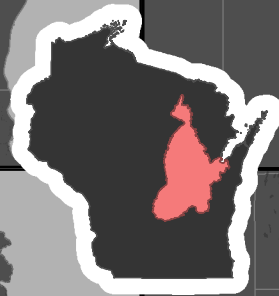
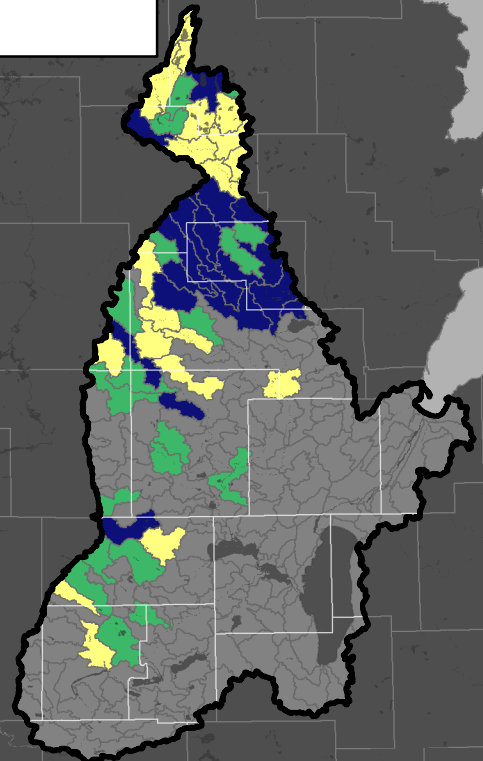
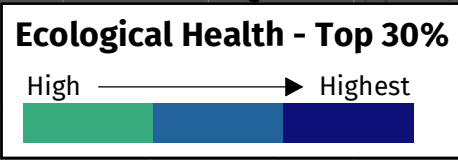
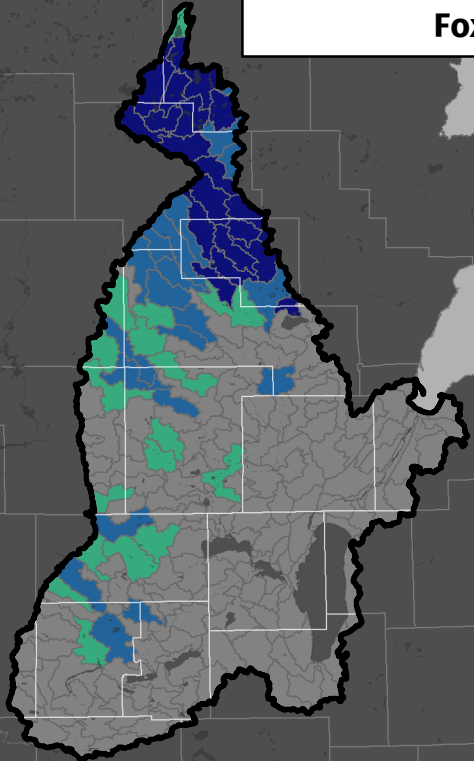
— High Quality Waters

The top 30% healthiest watersheds in the HUC6 were selected to identify watershed protection priorities based on the ecological health score. High quality lakes and streams (based on waterbody identification code - WBIC), and high quality wetlands were then summed within each of the watersheds.

Watersheds are ranked and color-coded by ecological health score.

Watershed Protection Priorities

Fox - HUC6 (040302)



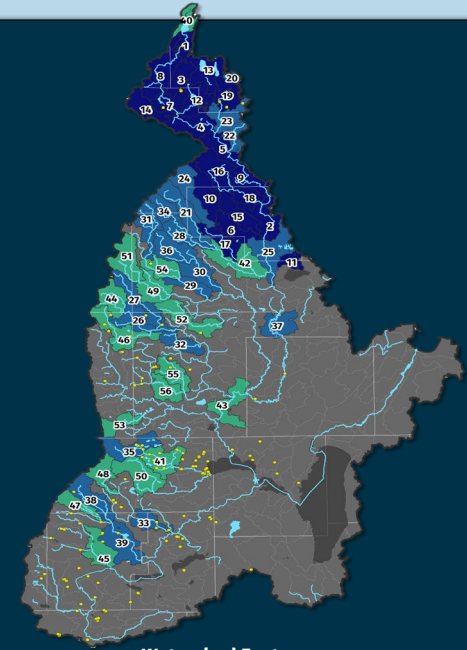
The top 30% healthiest watersheds are first identified, then the opportunities and vulnerability are overlaid upon those healthiest watersheds to identify the protection potential of the healthiest watersheds.

Protection Potential = (Eco + Opp) - Vulnerability



RANK & MAP ID	HUC12 NUMBER	HUC12 NAME	ECOLOGICAL HEALTH SCORE	PROTECTION PRIORITY SCORE	HIGH-QUALITY LAKES	HIGH-QUALITY RIVERS	HIGH-QUALITY WETLANDS
1	040302020102	Little Rice Lake-Wolf R.	95.2	61.2		1	1
2	040302020701	Dalles Creek-Wolf R.	94.3	70.1			1
3	040302020105	Squaw Creek-Swamp Creek	93.6	66.5		1	
4	040302020206	Squaw Creek-Wolf R.	93.4	62.6	1	3	
5	040302020302	Slough Gundy Rapids-Wolf R.	91.7	60.6			1
6	040302020404	Neopit Millpond 108-West Br Wolf R.	91.7	67.7		1	
7	040302020106	Spider Creek-Wolf R.	91.5	67.5	1	1	4
8	040302020103	Upper Post Lake-Wolf R.	91.1	60.3			2
9	040302020305	White Lake Creek-Wolf R.	91.1	68.1			2
10	040302020402	Elma Creek-West Branch Wolf R.	90.2	71.2			1
11	040302020602	Loon Creek	89.1	68.5			
12	040302020201	Pickrel Creek	88.9	60.6	1	1	
13	040302020104	Metonga Lake-Swamp Creek	87.1	65.8	2	1	
14	040302020202	Hunting R.	86.8	69.2			2
15	040302020403	Little West Branch Creek	86.8	65.4			
16	040302020303	Elton Creek-Evergreen R.	86.5	69.9		2	
17	040302020504	Miller Creek	86.2	68.2		1	
18	040302020304	McCall Creek-Evergreen R.	85.2	64.6		1	
19	040302020204	Bog Brook-Lily R.	85	61.3		1	2
20	040302020203	Hardwood Lake	84.6	64.5			1
21	040302020503	Moose Lake-Red R.	84.1	70.3	1	1	
22	040302020301	Ninemile Creek	84	59.8		1	
23	040302020205	East Branch of the Lily R.	83.7	58.3		1	1
24	040302020401	Little West Branch Wolf R.	82.1	67.5			
25	040302020702	Legend Lake-Wolf R.	81.3	65.5	3	2	
26	040302021504	Bradley Creek-Little Wolf R.	80.8	63.8		2	2
27	040302021503	Comet Creek	80.4	67.3		1	
28	040302020502	Silver Creek-West Branch Red R.	80.2	67.0		3	
29	040302021006	Logemanns Creek-Middle Br Embarrass R.	79.2	61.8		1	
30	040302021202	Pony Creek-North Branch Embarrass R.	78.3	62.0		1	
31	040302021004	Elmhurst Creek-Middle Br Embarrass R.	77.7	60.4		3	
32	040302021701	Whitcomb Creek	75.8	68.1		1	
33	040302010806	White R.	75.7	64.3		1	5
34	040302020501	Mattoon Creek-West Branch Red R.	75.3	58.9		1	
35	040302022001	Humphrey Creek-Pine R.	75	66.3	4	4	5
36	040302021201	Strassburg Creek-N. Br Embarrass R.	74.8	65.7		4	
37	040302020903	Navarino Marsh-Wolf R.	74.1	58.0		1	
38	040302010703	Little Pine Creek-Mecan R.	74	63.8		3	1
39	040302010704	Mecan R.	74	63.2		1	6
40	040302020101	Headwaters Wolf R.	73.6	54.0	1		9
41	040302022002	Carpenter Creek-Pine R.	73.5	59.4	5	3	
42	040302020505	Red Lakes-Red R.	72.8	63.0		3	
43	040302021902	Partridge Crop Lake-Wolf R.	72.7	62.5		1	
44	040302021501	Holt Creek-Little Wolf R.	72.3	54.7		2	
45	040302010304	Montello R.	72.2	58.1	1	2	
46	040302021502	Flume Creek	72	60.1	1	2	4
47	040302010701	Weddle Creek	71.7	56.6	2	2	
48	040302010801	West Branch White R.	71.7	63.2	1	2	
49	040302021002	Tiger Creek-South Branch Embarrass R.	71.7	58.9		2	
50	040302022004	Bruce Creek-Willow Creek	71.4	61.4	6	2	
51	040302021001	Spranger Creek-South Br Embarrass R.	71.2	59.6		2	
52	040302021102	South Branch Pigeon R.	71.2	53.9		4	
53	040302021806	Emmons Creek	71	61.7		1	
54	040302021005	Dent Creek-Middle Branch Embarrass R.	70.9	58.4		3	2
55	040302021603	North Branch Little Wolf R.	70.6	60.1		3	
56	040302021604	Nichol Creek-South Branch Little Wolf R.	70.6	61.2		1	

31 High-Quality Lakes in Top 30% Healthiest Watersheds
74 High-Quality Lakes in HUC6 Watershed
42% High-Quality Lakes are within the Healthiest Watersheds
71 High-Quality Streams in Top 30% Healthiest Watersheds
134 High-Quality Streams in HUC6 Watershed
53% High-Quality Streams are within the Healthiest Watersheds



Ecological Health Score & ID

Healthiest (Dark Blue)

High Quality Wetlands (Yellow Dot)

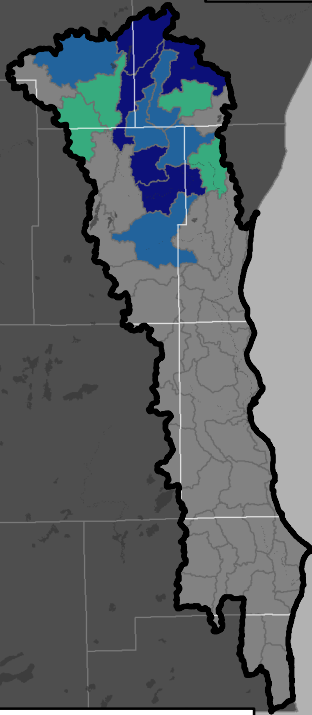
High Quality Waters (Blue Line)

The top 30% healthiest watersheds in the HUC6 were selected to identify watershed protection priorities based on the ecological health score. High quality lakes and streams (based on waterbody identification code - WBIC), and high quality wetlands were then summed within each of the watersheds.

Watersheds are ranked and color-coded by ecological health score.

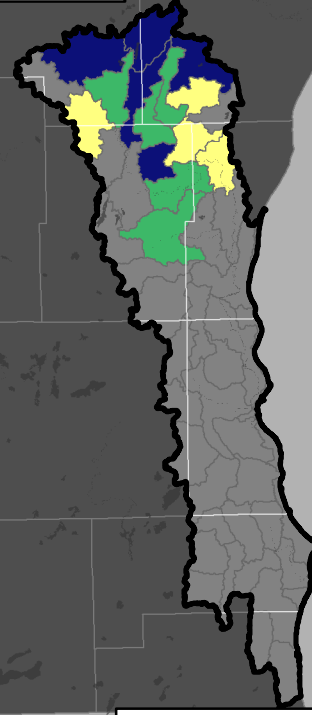
Watershed Protection Priorities

SW Lake Michigan - HUC6 (040400)



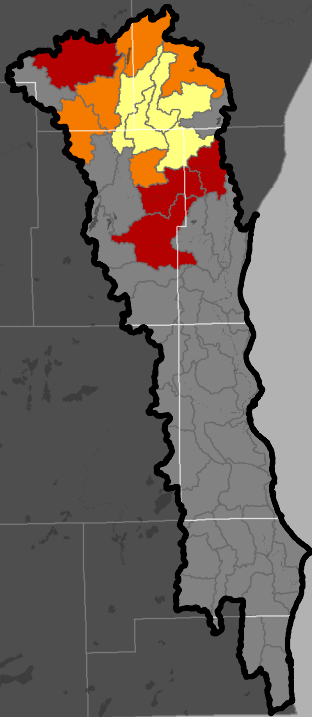
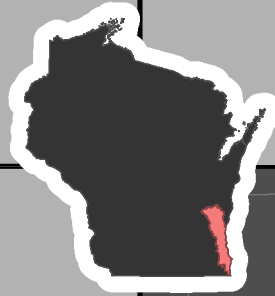
Ecological Health - Top 30%

High —————> Highest



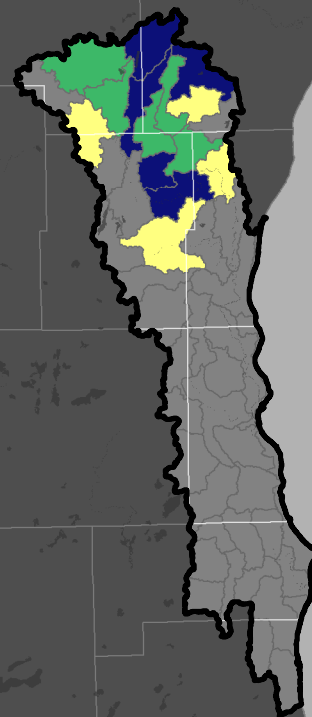
Opportunities

Lower —————> Higher



Vulnerability

Lower —————> Higher



Protection Potential

Lower —————> Higher



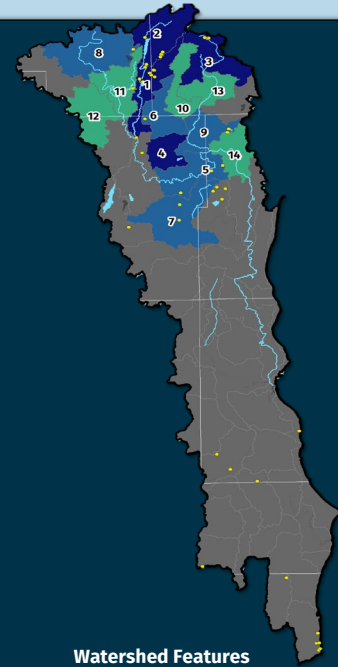
The top 30% healthiest watersheds are first identified, then the opportunities and vulnerability are overlaid upon those healthiest watersheds to identify the protection potential of the healthiest watersheds.

$$\text{Protection Potential} = (\text{Eco} + \text{Opp}) - \text{Vulnerability}$$



RANK & MAP ID	HUC12 NUMBER	HUC12 NAME	ECOLOGICAL HEALTH SCORE	PROTECTION PRIORITY SCORE	HIGH-QUALITY LAKES	HIGH-QUALITY RIVERS	HIGH-QUALITY WETLANDS
1	040400030206	East Branch Milwaukee R.	72.5	61.1	1	1	8
2	040400030205	Long Lake-East Branch Milwaukee R.	66.6	63.9	1	2	6
3	040400030101	Nichols Creek	60	54.7		2	3
4	040400030106	Lizard Mound State Park	59.5	58.8	1		1
5	040400030209	Village of Newburg-Milwaukee R.	57.1	52.5		1	3
6	040400030105	Stony Creek	55.1	52.2			1
7	040400030303	Jackson Marsh State Wildlife Area-Cedar Cre	54.2	51.1		1	2
8	040400030202	Kettle Moraine Lake-Milwaukee R.	53.2	51.4		1	1
9	040400030107	North Branch Milwaukee R.	53	51.7	1		1
10	040400030102	Mink Creek	52.9	51.9			1
11	040400030204	Auburn Lake Creek-Milwaukee R.	52.8	52.0	1	2	
12	040400030203	West Branch Milwaukee R.	48.2	48.5			
13	040400030103	Batavia Creek-North Branch Milwaukee R.	47.8	49.5		1	
14	040400030602	Town of Freedonia-Milwaukee R.	47.5	49.0		1	

- 5** High-Quality Lakes in Top 30% Healthiest Watersheds
- 8** High-Quality Lakes in HUC6 Watershed
- 63%** High-Quality Lakes are within the Healthiest Watersheds
- 7** High-Quality Streams in Top 30% Healthiest Watersheds
- 8** High-Quality Streams in HUC6 Watershed
- 88%** High-Quality Streams are within the Healthiest Watersheds



Watershed Features

Ecological Health Score & ID



● High Quality Wetlands

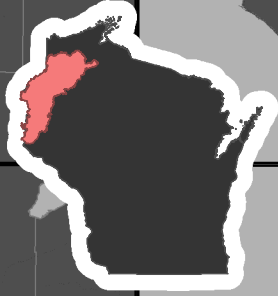
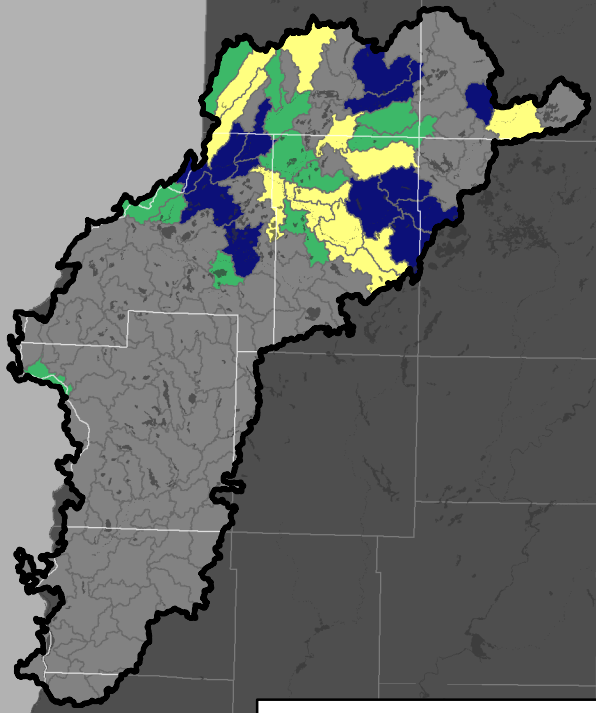
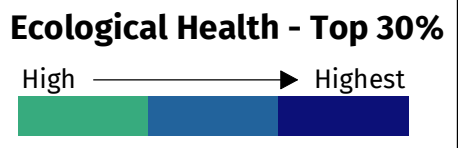
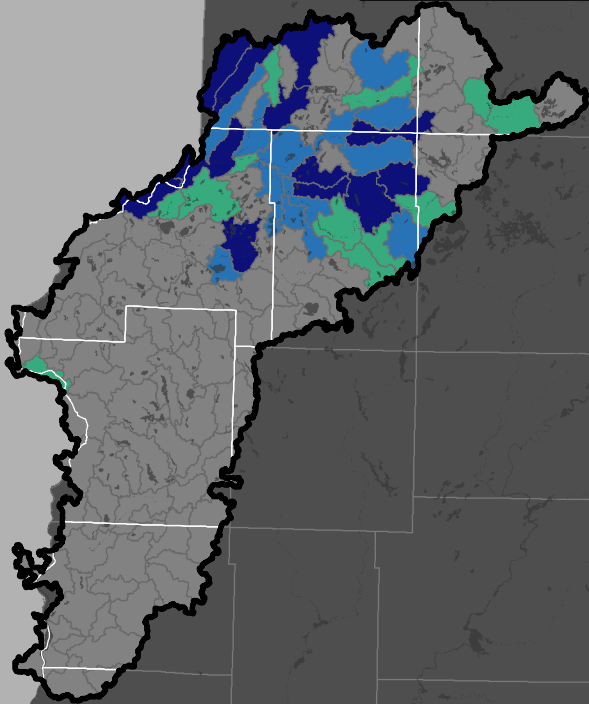
— High Quality Waters

The top 30% healthiest watersheds in the HUC6 were selected to identify watershed protection priorities based on the ecological health score. High quality lakes and streams (based on waterbody identification code - WBIC), and high quality wetlands were then summed within each of the watersheds.

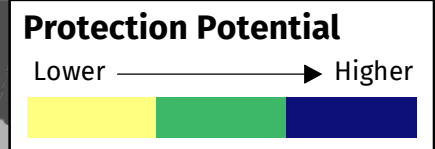
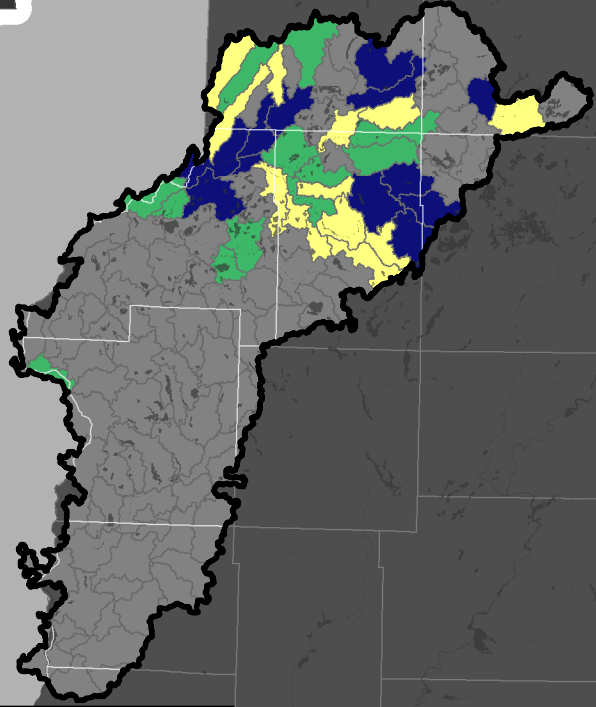
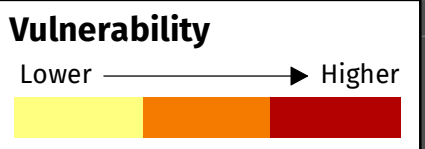
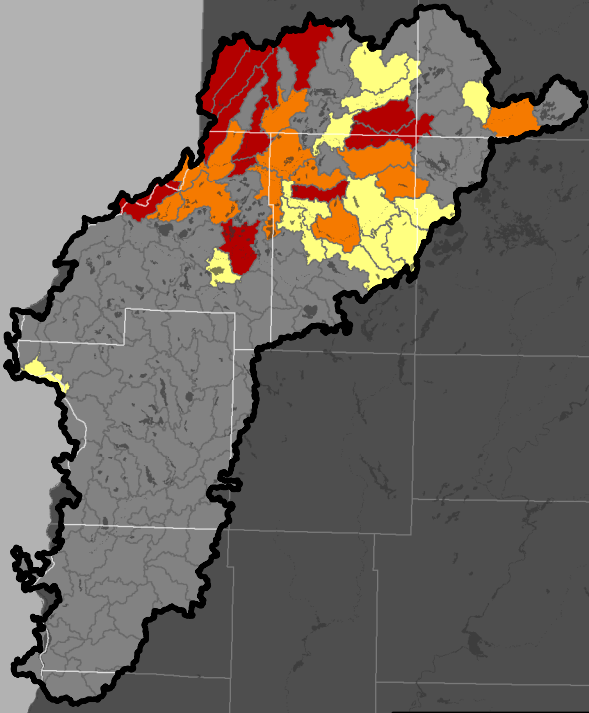
Watersheds are ranked and color-coded by ecological health score.

Watershed Protection Priorities

St. Croix - HUC6 (070300)



*Only WI portion of St. Croix HUC6 depicted in map



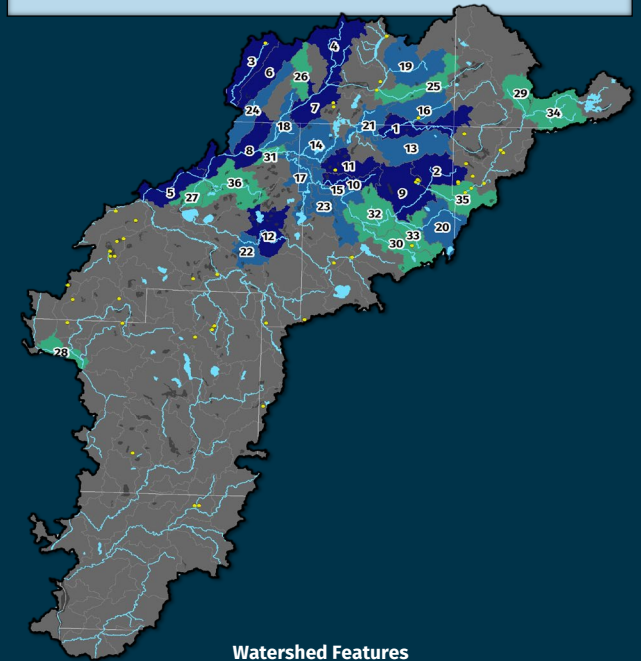
The top 30% healthiest watersheds are first identified, then the opportunities and vulnerability are overlaid upon those healthiest watersheds to identify the protection potential of the healthiest watersheds.

Protection Potential = (Eco + Opp) - Vulnerability



RANK & MAP ID	HUC12 NUMBER	HUC12 NAME	ECOLOGICAL HEALTH SCORE	PROTECTION PRIORITY SCORE	HIGH-QUALITY LAKES	HIGH-QUALITY RIVERS	HIGH-QUALITY WETLANDS
1	070300020306	Haymaker Creek-Totagatic R.	95.7	65.7			1
2	070300020201	Chippanazie Creek	95.6	71.0			2
3	070300010301	Spruce R.	95	64.2			1
4	070300010201	Moose R.	94.7	64.9			2
5	070300011203	City of Danbury-Saint Croix R.	94.7	66.7			1
6	070300010302	Toad Creek-Upper Tamarack R.	94.5	65.1			
7	070300010204	Buckley Creek-Saint Croix R.	94	68.0			1
8	070300011202	Hay Creek-Saint Croix R.	93.8	72.4			1
9	070300020205	Gull Creek-Namekagon R.	93.3	71.3	1		1
10	070300020401	Stuntz Brook	92.6	64.2			1
11	070300020310	Chicog Creek	92.2	66.4			1
12	070300010501	Sand Lake-Yellow R.	91.4	67.2	1	1	
13	070300020305	Frog Creek	91.2	64.7	1		
14	070300020311	Totagatic R.	90.3	66.8	2	2	
15	070300020403	Christensen Creek-Namekagon R.	90.2	64.9			2
16	070300020304	Ounce R.	90.1	64.4			1
17	070300020406	McKenzie Creek-Namekagon R.	89.5	59.8	2	2	1
18	070300010206	Clemens Creek-Saint Croix R.	88.9	69.9			3
19	070300010103	Ox Creek	88.8	68.5	2		2
20	070300020203	Godfrey Creek-Bean Brook	88.8	71.0	2	1	
21	070300020308	Bergen Creek-Totagatic R.	88.4	59.1	1	2	
22	070300010502	Big Sand Lake-Yellow R.	88.3	65.3			
23	070300020402	Casey Creek	88.2	64.7			
24	070300011201	Chases Brook	87.8	62.0			1
25	070300010106	Eau Claire R.	87.4	67.3			1
26	070300010203	Crotte Creek	87.4	63.4			
27	070300010506	Buffalo Lake-Yellow R.	87.4	64.9			1
28	070300050602	Governor Knowles State Forest-St. Croix R.	87.3	66.6			1
29	070300020102	Big Brook	86.8	69.7			1
30	070300020206	Little MackayCreek	86.8	63.3	1	1	
31	070300020407	Namekagon R.	86.4	69.6			2
32	070300020207	Trego Lake-Namekagon R.	86.2	63.6			3
33	070300020204	Bean Brook	86.1	63.0			2
34	070300020103	Cap Creek-Namekagon R.	86	63.2			4
35	070300020202	Spring Lake Creek-Namekagon R.	86	68.8			1
36	070300010505	Loon Creek	85.6	68.2	2	1	1

- 13** High-Quality Lakes in Top 30% Healthiest Watersheds
- 45** High-Quality Lakes in HUC6 Watershed
- 29%** High-Quality Lakes are within the Healthiest Watersheds
- 33** High-Quality Streams in Top 30% Healthiest Watersheds
- 80** High-Quality Streams in HUC6 Watershed
- 41%** High-Quality Streams are within the Healthiest Watersheds



Watershed Features

Ecological Health Score & ID



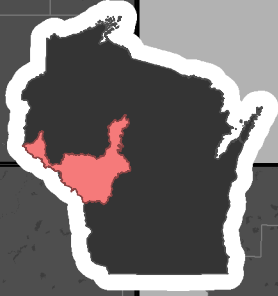
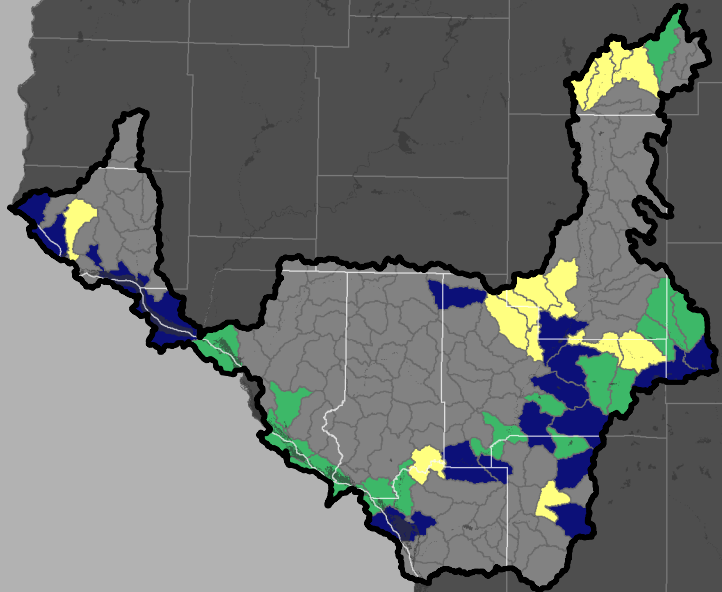
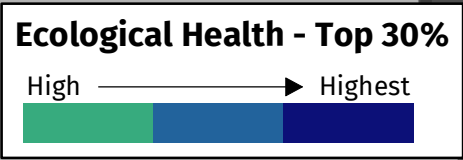
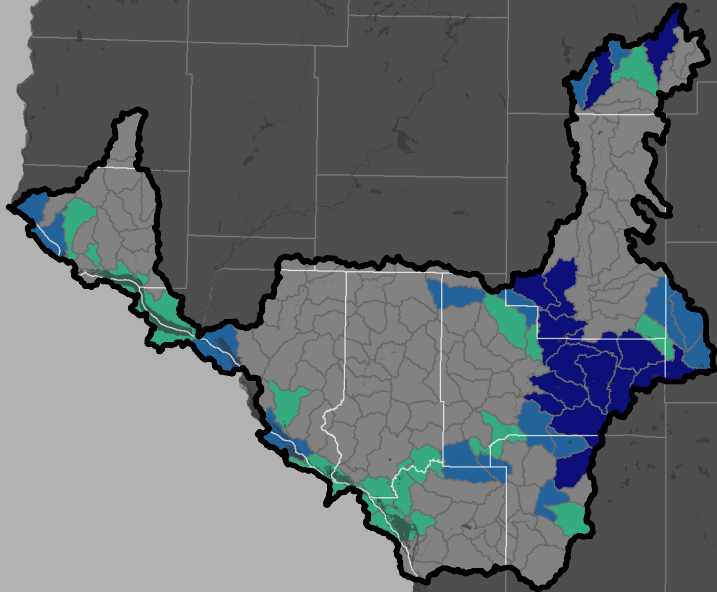
- High Quality Wetlands
- High Quality Waters

The top 30% healthiest watersheds in the HUC6 were selected to identify watershed protection priorities based on the ecological health score. High quality lakes and streams (based on waterbody identification code - WBIC), and high quality wetlands were then summed within each of the watersheds.

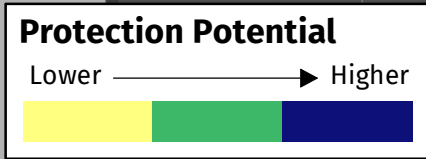
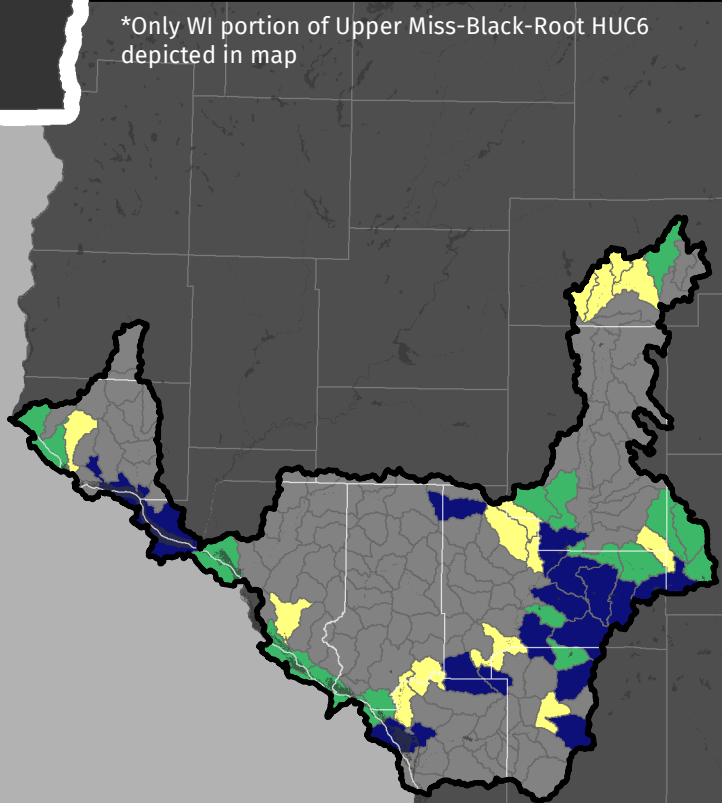
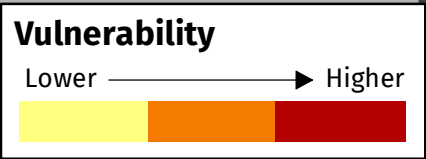
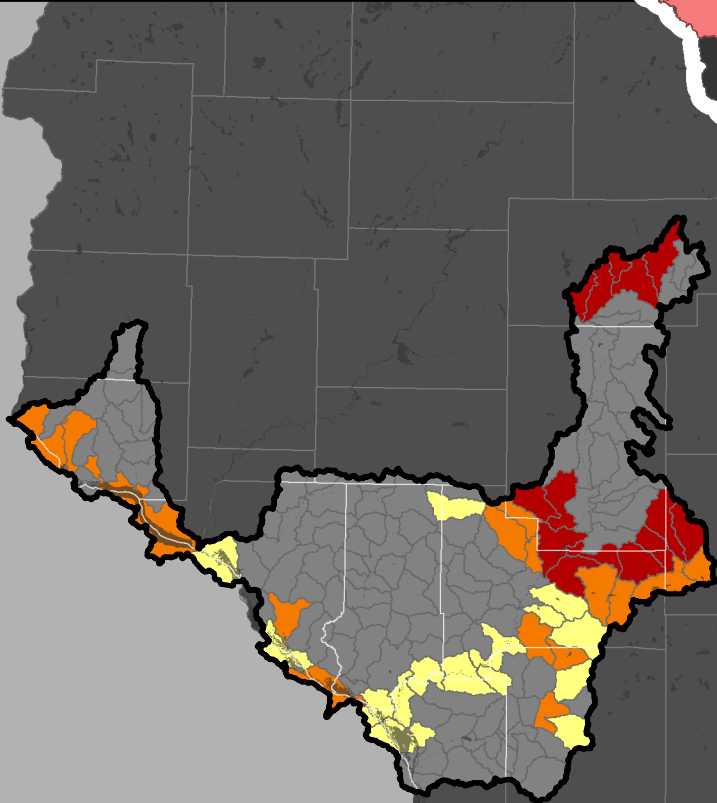
Watersheds are ranked and color-coded by ecological health score.

Watershed Protection Priorities

Upper Mississippi-Black-Root - HUC6 (070400)



*Only WI portion of Upper Miss-Black-Root HUC6 depicted in map



The top 30% healthiest watersheds are first identified, then the opportunities and vulnerability are overlaid upon those healthiest watersheds to identify the protection potential of the healthiest watersheds.

Protection Potential = (Eco + Opp) - Vulnerability



RANK & MAP ID	HUC12 NUMBER	HUC12 NAME	ECOLOGICAL HEALTH SCORE	PROTECTION PRIORITY SCORE	HIGH-QUALITY LAKES	HIGH-QUALITY RIVERS	HIGH-QUALITY WETLANDS
1	070400070703	Lower Morrison Creek	92.7	69.8		2	7
2	070400071001	Levis Creek	92.3	70.6	1	1	4
3	070400070606	Knutes Creek-East Fork of the Black R.	92.1	58.2		1	
4	070400070702	Middle Morrison Creek	89	61.0		1	3
5	070400070502	Fivemile Creek	85.7	56.3			1
6	070400071006	Glenn Creek-Robinson Creek	85.7	66.5		1	7
7	070400070503	Meadows Creek-Wedges Creek	84.6	56.0			
8	070400070608	Brushy Ridge-East Fork of the Black R.	84.5	58.4		1	
9	070400070701	Upper Morrison Creek	83.8	63.3		1	4
10	070400070906	Lake Arbutus	82.3	62.6		2	
11	070400071002	Perry Creek	81.8	59.5		1	
12	070400060202	Headwaters La Crosse R.	80.4	69.8		2	
13	070400070605	Indian Creek-East Fork of the Black R.	80.2	63.7		1	5
14	070400070304	Joe Creek-Black R.	79.3	55.1		1	
15	070400070104	Headwaters-Black R.	79.1	59.6		1	
16	070400070105	Paradise Creek	77.9	55.0			
17	070400071007	Stony Creek-Robinson Creek	74.7	61.0		2	
18	070400030606	Fountain City-Mississippi R.	73.8	57.6			
19	070400070801	East Fork of Halls Creek	71.9	53.8			
20	070400060204	Bailey Creek-La Crosse R.	71.5	55.5		1	
21	070400070601	Rocky Run	71.3	57.0			
22	070400071204	Sand Creek	71.1	62.1			
23	070400030102	South Fork of the Buffalo R.	70.9	61.2		4	
24	070400071005	Clear Creek	70.4	56.4		1	
25	070400070602	Tomas Creek-East Fork of the Black R.	70.3	56.1		1	
26	070400070303	McKenzie Creek	70.2	53.1			
27	070400030601	City of Wabasha-Mississippi R.	70.1	56.6		1	
28	070400010102	Lock and Dam No. 3-Mississippi R.	69.5	59.1			
29	070400070603	Turner R.-East Fork of the Black R.	69	59.1		1	
30	070400071206	Davis Creek-Black R.	68.8	59.9		3	
31	070400030610	City of Winona-Mississippi R.	68	55.6			
32	070400070604	Hay Creek	67.8	53.0			
33	070400060101	Shingle Creek-Mississippi R.	66.5	55.7			
34	070400060203	Silver Creek	65.7	65.1		1	1
35	070400070106	Washington Creek-Black R.	65	50.1	1	1	
36	070400070803	Trow Lake-Halls Creek	64.5	52.5			
37	070400071209	Van Loon Lake-Black R.	63.4	55.2		1	4
38	070400060103	Lake Onalaska-Mississippi R.	63.2	64.7		1	1
39	070400070802	South Fork of Halls Creek-Halls Creek	62.9	52.1		2	
40	070400010705	Lake Pepin	62.7	62.5		1	4
41	070400010303	Spring Creek-Trimble R.	62.4	50.2		1	
42	070400030405	Waumaundee Creek	61.7	52.8		2	
43	070400071208	Fleming Creek	61.7	52.9		2	
44	070400071205	Roaring Creek-Black R.	61.5	53.4		1	

2 High-Quality Lakes in Top 30% Healthiest Watersheds
2 High-Quality Lakes in HUC6 Watershed
100% High-Quality Lakes are within the Healthiest Watersheds
37 High-Quality Streams in Top 30% Healthiest Watersheds
124 High-Quality Streams in HUC6 Watershed
30% High-Quality Streams are within the Healthiest Watersheds



Watershed Features

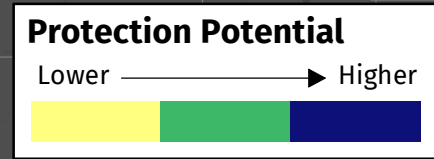
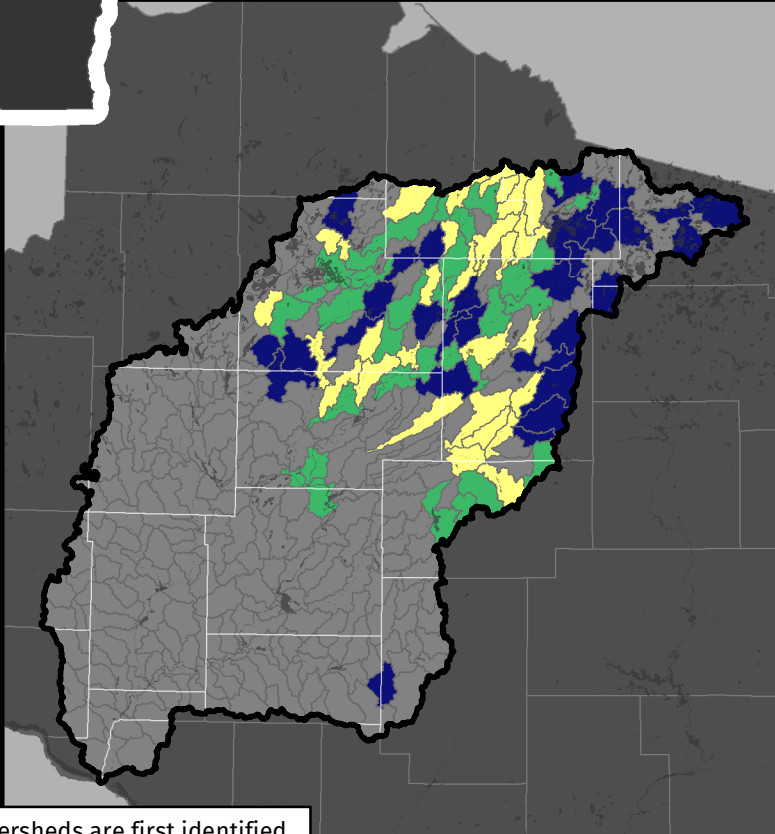
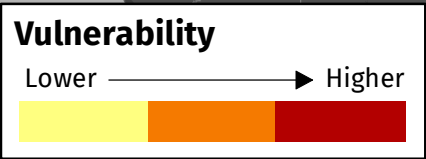
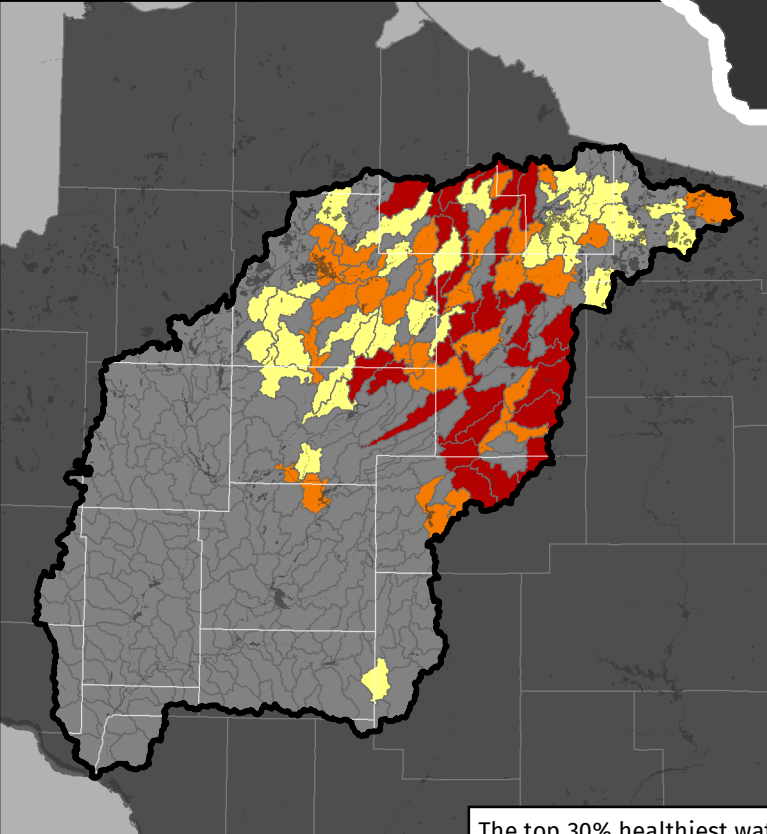
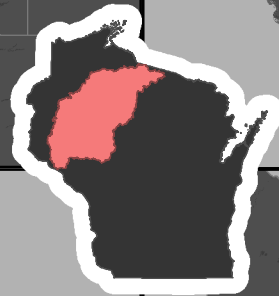
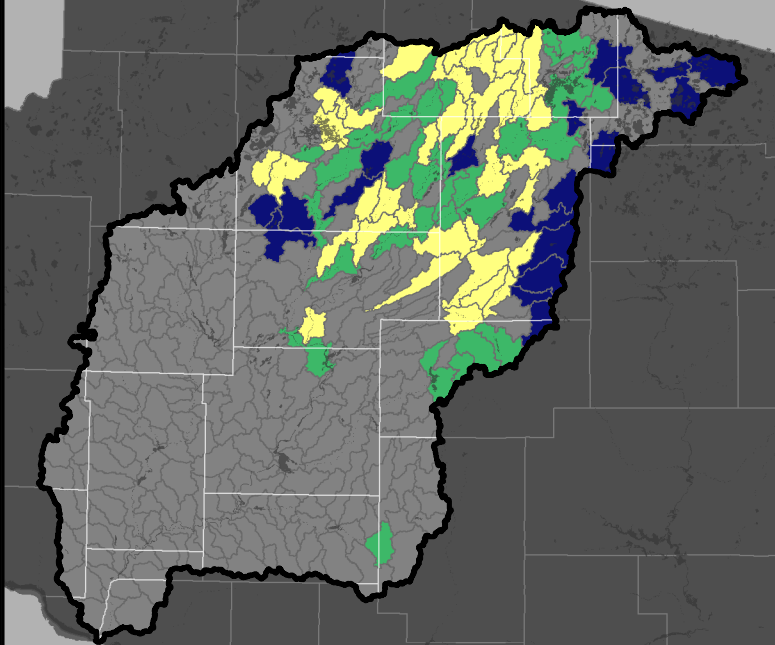
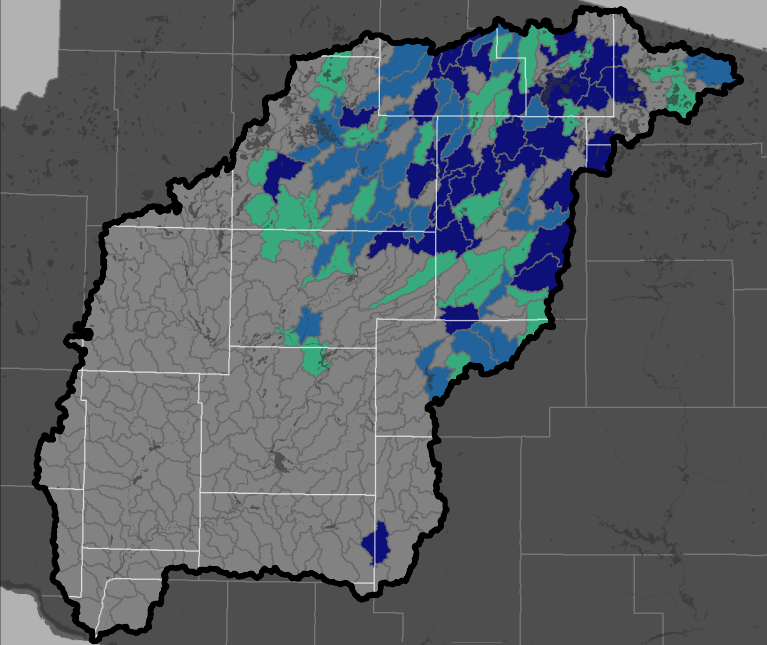
Ecological Health Score & ID ● High Quality Wetlands
█ Healthiest █ High Quality Waters

The top 30% healthiest watersheds in the HUC6 were selected to identify watershed protection priorities based on the ecological health score. High quality lakes and streams (based on waterbody identification code - WBIC), and high quality wetlands were then summed within each of the watersheds.

Watersheds are ranked and color-coded by ecological health score.

Watershed Protection Priorities

Chippewa - HUC6 (070500)



The top 30% healthiest watersheds are first identified, then the opportunities and vulnerability are overlaid upon those healthiest watersheds to identify the protection potential of the healthiest watersheds.

Protection Potential = (Eco + Opp) - Vulnerability



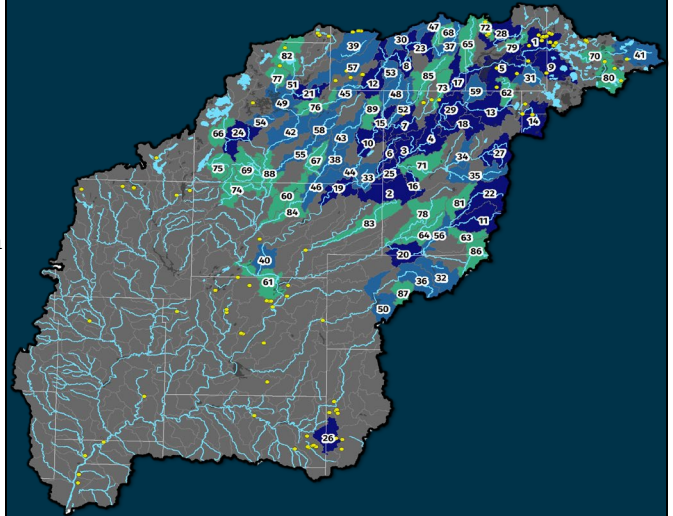
Watershed Protection Priorities

Chippewa - HUC 070500



RANK & MAP ID	HUC12 NUMBER	HUC12 NAME	ECOLOGICAL HEALTH SCORE	PROTECTION PRIORITY SCORE	HIGH-QUALITY LAKES	HIGH-QUALITY RIVERS	HIGH-QUALITY WETLANDS
1	070500020108	Manitowish R.	98.7	66.4	4	1	12
2	070500030303	Skinner Creek	97.6	61.2			
3	070500030210	Smith Creek-South Fork Flambeau R.	97.1	61.2		2	
4	070500030209	Patterson Creek-South Fork Flambeau R.	96.9	60.3		2	
5	070500020307	Turtle-Flambeau Flowage-Flambeau R.	96.5	63.5		1	3
6	070500030301	Price Creek	96.4	62.2			
7	070500020505	Le Tourneau Creek-Flambeau R.	96.2	68.7		2	
8	070500010207	Muskellunge Creek-E Fork Chippewa R.	95.7	59.6		3	
9	070500020203	Little Bear Creek	95.6	65.2	5		1
10	070500020606	Long and Bear Creeks-Flambeau R.	94.9	62.3		2	1
11	070500040103	Douglas Creek	94.6	63.0		1	
12	070500010210	Pelican Lake-East Fork Chippewa R.	93.7	62.9		1	
13	070500030206	Riley Creek-South Fork Flambeau R.	93.7	62.3		1	
14	070500030202	Squaw Creek-South Fork Flambeau R.	93.6	68.8	1	1	
15	070500020603	Rock Creek-Flambeau R.	93.4	60.5		1	
16	070500030108	Carpenter Creek	93.1	58.8		1	
17	070500020502	Deer Creek-Flambeau R.	92.9	58.5		1	
18	070500030207	Sailor Creek	92.6	58.9		1	
19	070500020701	Big Falls Flowage-Flambeau R.	92.5	60.2		1	
20	070500040110	Lower-South Fork Jump	92.5	57.0		1	
21	070500010108	Venison Creek	92.4	59.0		1	
22	070500040102	Headwaters-South Fork Jump R.	92.4	63.0		1	
23	070500010205	Willerth Creek-East Fork Chippewa R.	92.1	59.3		1	
24	070500010406	Eddy Creek-Couderay R.	92	60.5		3	
25	070500030302	Stoney Brook-South Fork Flambeau R.	91.9	59.2		1	
26	070500060208	South Fork Eau Claire R.	91.9	62.8			1
27	070500030101	Headwaters Elk R.	91.7	64.7		4	
28	070500020304	Weber Creek-Turtle R.	91.6	62.9	1	1	
29	070500030208	Blockhouse Lake-S Fork Flambeau R.	91.6	60.3		2	
30	070500010206	Dryden Creek	91.5	57.7			
31	070500020204	Bear R.	91.5	60.9			
32	070500040108	Mondeaux R.	91.2	58.5		2	
33	070500030304	South Fork Flambeau R.	91	60.1		1	
34	070500030104	Hoffman Creek-Elk R.	90.9	58.1		1	
35	070500030106	Little Elk R.	90.8	62.6		4	
36	070500050202	North Fork Yellow R.	90.8	59.2		1	
37	070500010202	Headwaters East Fork Chippewa R.	90.7	57.7		1	
38	070500010603	Boss Creek-Thornapple R.	90.4	59.8		1	
39	070500010101	Torch R.	90.3	57.6		1	
40	070500020704	Flambeau R.	90.2	59.5		1	
41	070500020102	Headwaters Manitowish R.	90.1	65.9	3	2	
42	070500010501	Radison Flowage-Chippewa R.	90	59.5			
43	070500010601	Headwaters Thornapple R.	90	60.6		1	
44	070500020607	Wannigan & Porcupine RpdS-Flambeau	90	58.7		1	
45	070500010211	Blaisdell & Bear Lakes-E Fork Chippewa R.	89.8	62.4		1	
46	070500010604	Spring and Stony Creeks-Thornapple R.	89.8	58.4		1	
47	070500010203	Magee Creek	89.7	57.3			
48	070500020601	Pine Creek	89.6	59.0		1	
49	070500010307	East Lake Chippewa	89.5	59.0		2	
50	070500050204	Chequamegon Waters	89.5	60.2		1	
51	070500010109	West Fork Chippewa Rvier	89.2	57.9		1	
52	070500020402	Butternut Creek	89.1	56.9		2	
53	070500010208	Rocky Run-East Fork Chippewa R.	88.8	58.3		2	
54	070500010301	Pipestone Creek	88.8	60.1		1	
55	070500010505	Brunet R.	88.5	66.2		1	
56	070500040109	Middle-South Fork Jump	88.4	57.2		1	
57	070500010105	Moose R.	88.3	59.8			1
58	070500010503	Winter Lake-Brunet R.	88.1	65.9		2	
59	070500030205	Hay Creek	88.1	58.9		1	
60	070500010605	Little Thornapple R.	87.9	58.1			
61	070500010904	Holcolombe Flowage-Chippewa R.	87.7	59.7		1	
62	070500030204	Springstead Creek	87.6	62.8	1	1	
63	070500040104	Holmes Creek	87.5	61.9			
64	070500040202	Hobbles Creek	87.5	55.9		1	
65	070500020501	Swamp Creek	87.4	56.7		1	
66	070500010405	Summit Creek-Couderay R.	87.3	58.7		1	
67	070500010602	Tupper Creek	87.3	57.8		2	
68	070500010201	Augustine Creek	87.2	56.5		1	
69	070500010507	Little Weirgor Creek	87.2	67.7		5	
70	070500020104	Island Lake-Manitowish R.	86.9	64.1	1	1	
71	070500030109	Elk R.	86.7	58.5		1	
72	070500020303	Moose Creek	86.6	58.8	1		2
73	070500020503	Bosner Creek-Flambeau R.	86.6	55.9		1	
74	070500010508	Big Weirgor Creek	86.5	66.2		3	
75	070500070101	Knuteson Creek	86.5	70.2		2	
76	070500010213	East Fork Chippewa R.	85.7	59.0		1	
77	070500010305	Hay Creek	85.7	56.5		1	
78	070500040204	North Fork Jump R.	85.7	54.7		1	
79	070500020305	Little Turtle R.	85.6	58.8	1	1	
80	070500020105	Trout Lake	85.4	65.7	5	1	4
81	070500040101	Hay Creek	85.4	56.3	2	1	2
82	070500010106	Teal R.	85.3	63.3		1	
83	070500040303	South Fork Main Creek	85.3	54.8		1	
84	070500010607	Thornapple R.	85.2	59.1	1	1	
85	070500020401	Headwaters Butternut Creek	85.2	57.6	1	1	
86	070500040106	Headwaters-Silver Creek	85.2	60.8	1	1	
87	070500050201	South Fork Yellow R.	85.2	59.0			
88	070500010509	White Birch Creek-Chippewa R.	84.8	57.5		1	
89	070500020602	Log Creek	84.4	57.6			

30 High-Quality Lakes in Top 30% Healthiest Watersheds
89 High-Quality Lakes in HUC6 Watershed
34% High-Quality Lakes are within the Healthiest Watersheds
77 High-Quality Streams in Top 30% Healthiest Watersheds
218 High-Quality Streams in HUC6 Watershed
35% High-Quality Streams are within the Healthiest Watersheds



Watershed Features

Ecological Health Score & ID

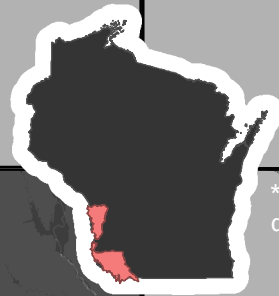
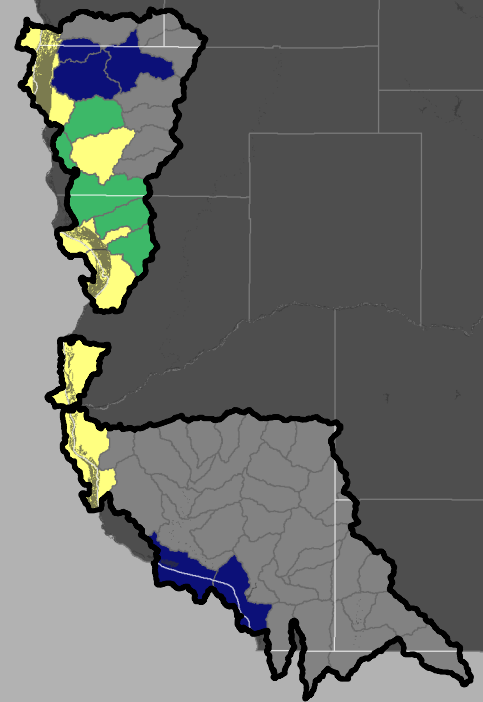
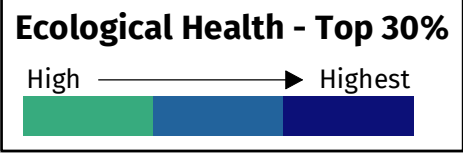
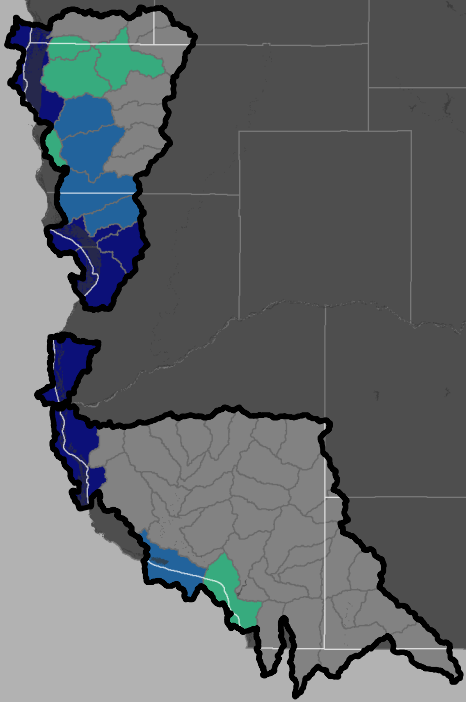
● High Quality Wetlands
 — High Quality Waters

The top 30% healthiest watersheds in the HUC6 were selected to identify watershed protection priorities based on the ecological health score. High quality lakes and streams (based on waterbody identification code - WBIC), and high quality wetlands were then summed within each of the watersheds.

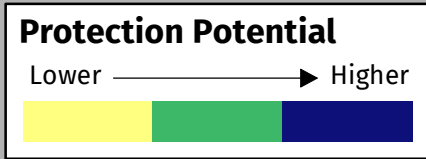
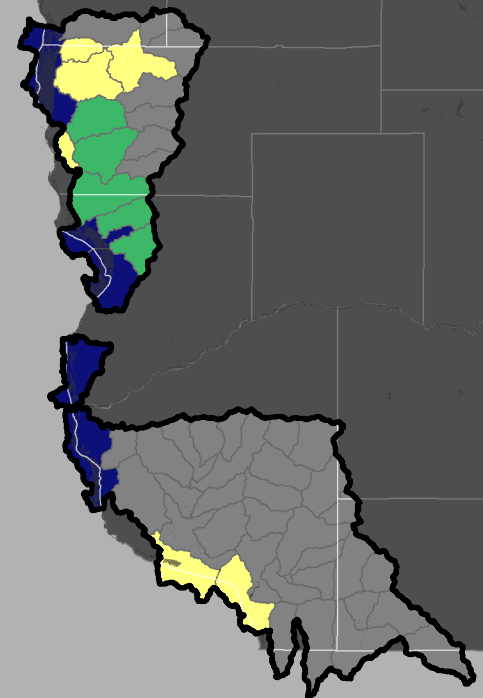
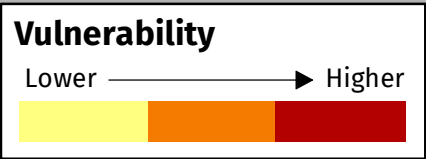
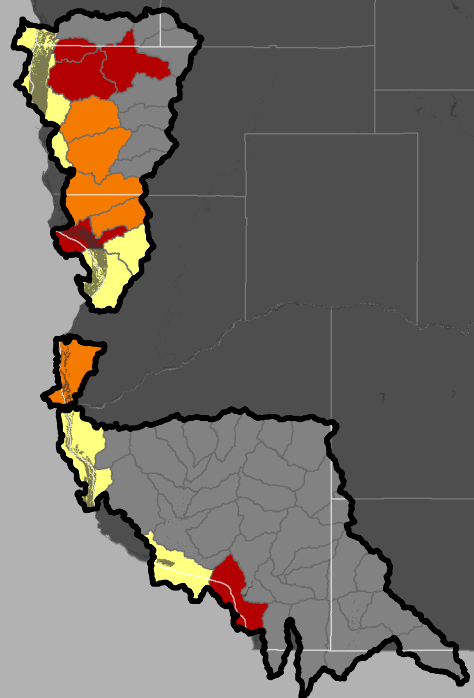
Watersheds are ranked and color-coded by ecological health score.

Watershed Protection Priorities

Upper Mississippi Maquoketa Plum - HUC6 (070600)



*Only WI portion of Upper Miss-Maq-Plum HUC6 depicted in map



The top 30% healthiest watersheds are first identified, then the opportunities and vulnerability are overlaid upon those healthiest watersheds to identify the protection potential of the healthiest watersheds.

Protection Potential = (Eco + Opp) - Vulnerability



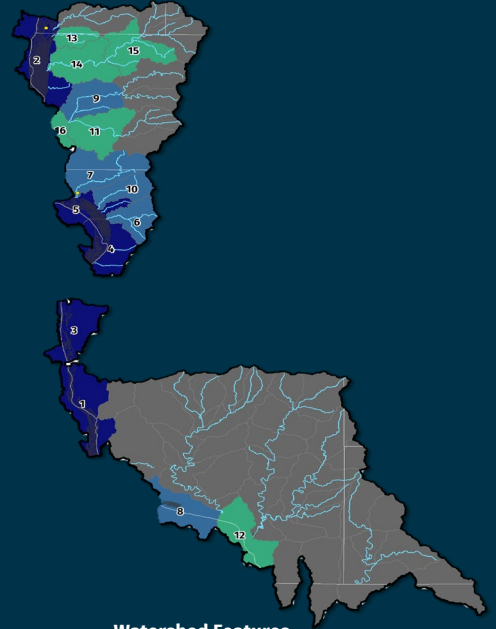
RANK & MAP ID	HUC12 NUMBER	HUC12 NAME	ECOLOGICAL HEALTH SCORE	PROTECTION PRIORITY SCORE	HIGH-QUALITY LAKES	HIGH-QUALITY RIVERS	HIGH-QUALITY WETLANDS
1	070600030704	Lock and Dam #10-Mississippi R.	76.5	59.0			
2	070600010504	Lock and Dam #8-Mississippi R.	72.9	58.8		1	1
3	070600011003	City of Prairie du Chien-Mississippi R.	72.9	64.1			
4	070600010707	Leitner Creek-Mississippi R.	70.5	63.9		2	
5	070600010705	Buck Creek-Mississippi R.	70	62.4			
6	070600010704	Copper Creek	67.8	55.7		2	
7	070600010701	Rush Creek	67	54.6		2	1
8	070600030707	McCartner Branch-Mississippi R.	66.8	54.0			1
9	070600010305	North Fork Bad Axe R.	66.7	55.5		2	
10	070600010703	Sugar Creek	65.6	54.9		1	
11	070600010306	South Fork Bad Axe R.	65.1	55.1		1	
12	070600030708	Sinnipee Creek-Mississippi R.	61.8	51.3		1	
13	070600010502	Chipmunk Creek	61.4	50.7		2	
14	070600010104	Lower Coon Creek	60.3	50.5		1	
15	070600010103	Middle Coon Creek	58.8	51.1		1	
16	070600010307	Bad Axe R.	58.8	53.0			

0 High-Quality Lakes in Top 30% Healthiest Watersheds
0 High-Quality Lakes in HUC6 Watershed

0% High-Quality Lakes are within the Healthiest Watersheds

18 High-Quality Streams in Top 30% Healthiest Watersheds
45 High-Quality Streams in HUC6 Watershed

40% High-Quality Streams are within the Healthiest Watersheds



Watershed Features

Ecological Health Score & ID

Healthiest

High Quality Wetlands

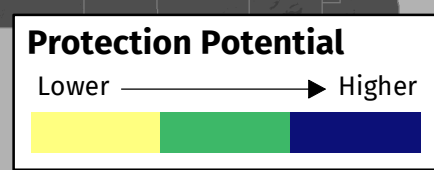
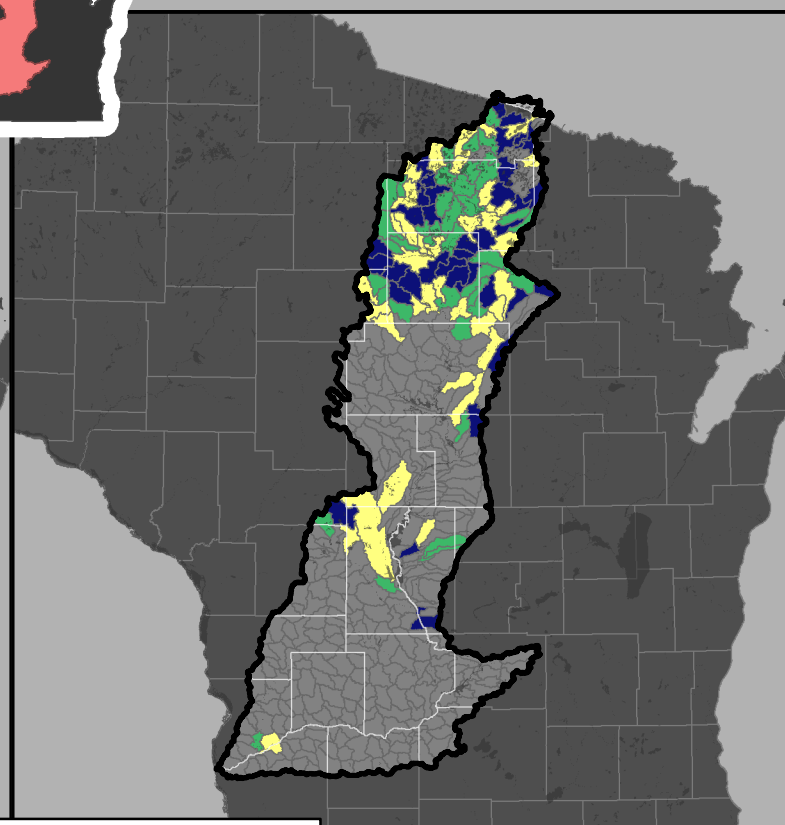
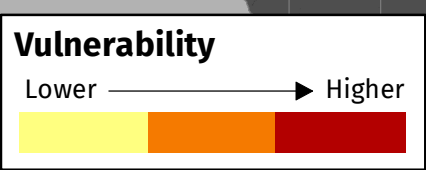
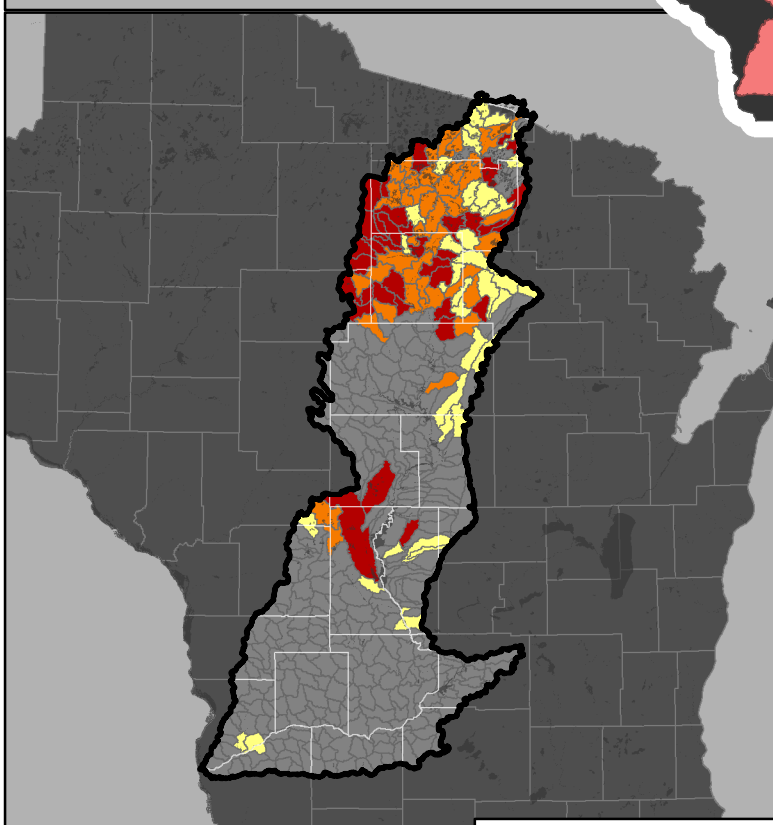
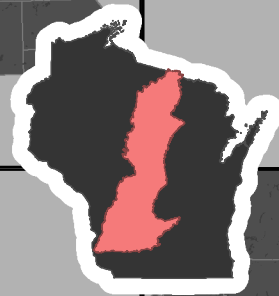
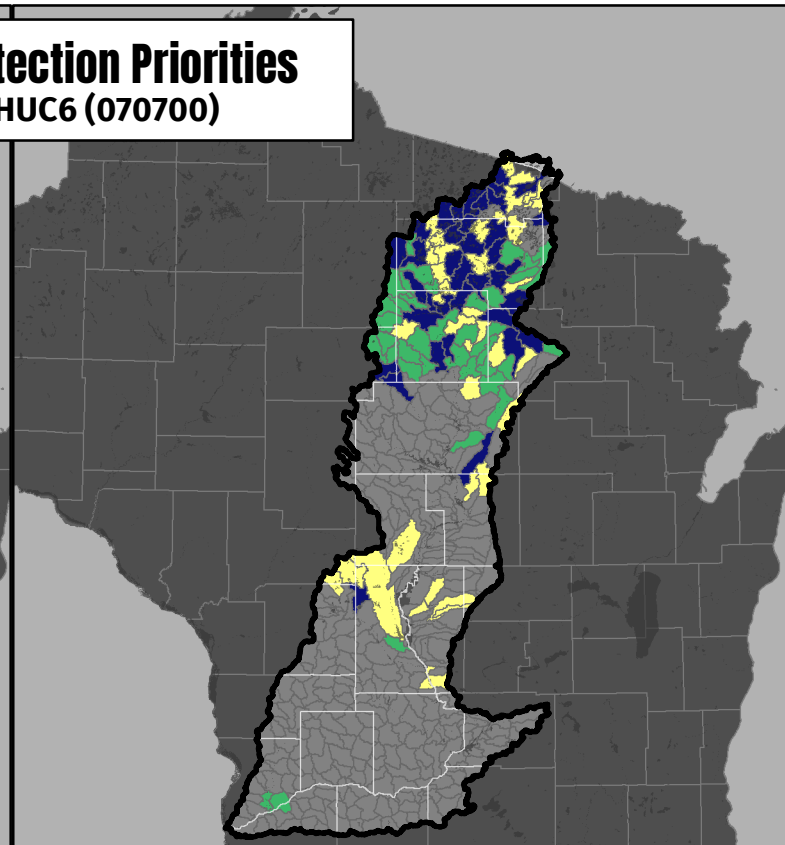
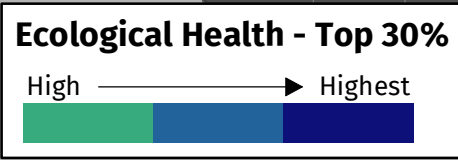
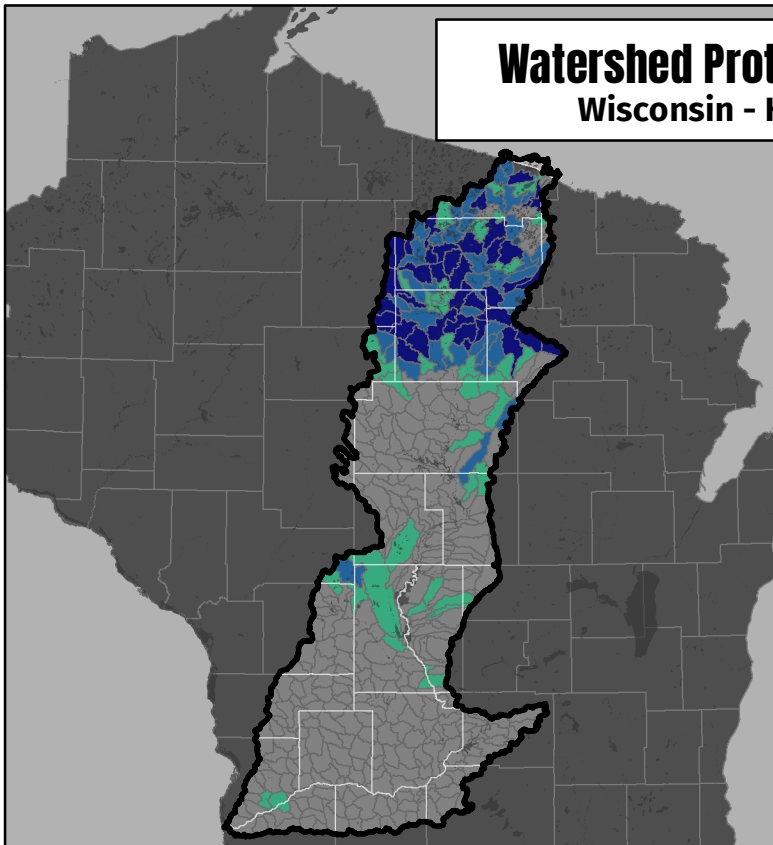
High Quality Waters

The top 30% healthiest watersheds in the HUC6 were selected to identify watershed protection priorities based on the ecological health score. High quality lakes and streams (based on waterbody identification code - WBIC), and high quality wetlands were then summed within each of the watersheds.

Watersheds are ranked and color-coded by ecological health score.

Watershed Protection Priorities

Wisconsin - HUC6 (070700)



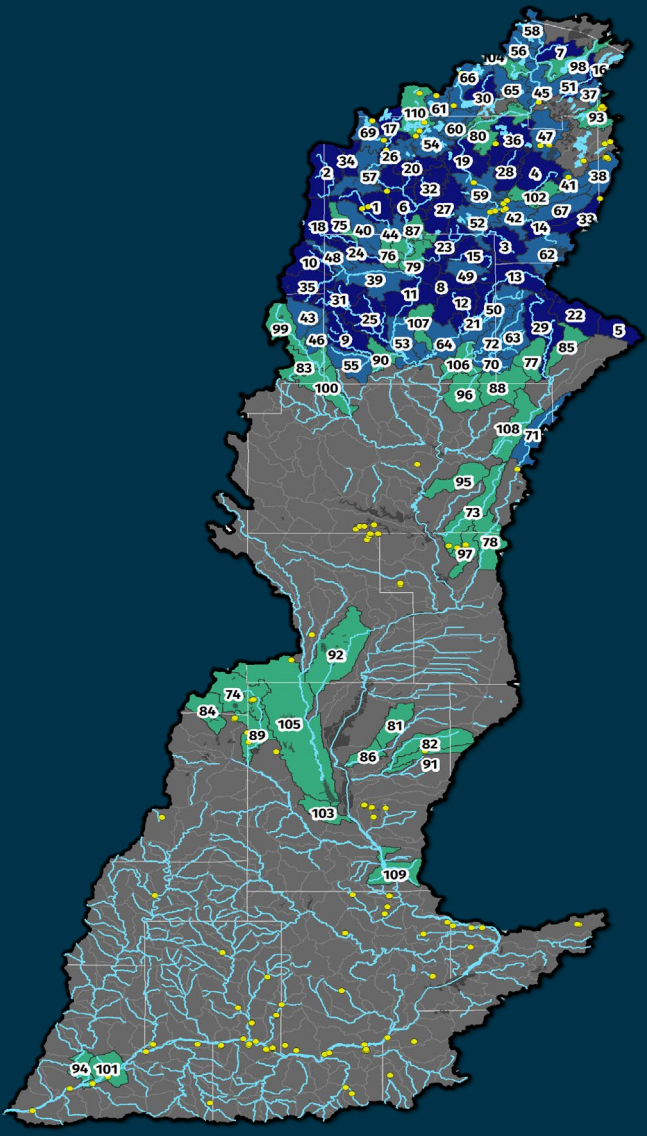
The top 30% healthiest watersheds are first identified, then the opportunities and vulnerability are overlaid upon those healthiest watersheds to identify the protection potential of the healthiest watersheds.

Protection Potential = (Eco + Opp) - Vulnerability



RANK & MAP ID	HUC12 NUMBER	HUC12 NAME	ECOLOGICAL HEALTH SCORE	PROTECTION PRIORITY SCORE	HIGH-QUALITY LAKES	HIGH-QUALITY RIVERS	HIGH-QUALITY WETLANDS
1	070700011002	Little Rice R.	100	67.0		1	2
2	070700010901	Headwaters-Willow R.	98.1	61.4		3	
3	070700011301	Noisy Creek	95.9	65.9		1	
4	070700010704	Gudegast Creek	95.4	66.3		1	
5	070700021101	Peters and Lawrence Lakes-Spring Brook	95.2	65.6			
6	070700010907	Swamp Creek-Tomahawk R.	95	67.2		1	
7	070700010304	Muskrat Creek-Wisconsin R.	94.3	66.5		2	
8	070700020401	Little Pine Creek	93.6	69.4			
9	070700020201	North Fork of the Copper R.	93.5	63.5		3	
10	070700011201	North Fork Spirit Creek	93.3	63.0		1	
11	070700020402	Berry Creek-Wisconsin R.	93.1	64.3		1	
12	070700020302	North Branch of the Prairie R.	93	64.3		1	
13	070700020301	Upper Prairie R.	92.3	61.0	1	1	
14	070700010707	Middle Pelican R.	91.8	64.5		1	
15	070700011304	Big Pine Creek	91.7	64.4		1	
16	070700010104	Deerskin R.	91.1	71.0		1	
17	070700010806	Cedar Falls-Shishebogama-Tomahawk R.	91.1	67.5	2	1	
18	070700011102	Headwaters-Somo R.	90.9	62.5		1	
19	070700010601	Tom Doyle Creek-Wisconsin R.	90.8	60.1	2	1	
20	070700010904	Rocky Run	90.8	66.2		1	
21	070700020304	Middle Prairie R.	90.6	69.4		1	
22	070700021201	Bogus Swamp-East Fork Eau Claire R.	90.5	61.0			
23	070700011305	Lake Alice-Wisconsin Rvier	90.2	60.1		3	
24	070700011104	Landwehr Creek-Somo R.	90.1	62.4		1	
25	070700020102	Averil Creek-New Wood R.	90.1	63.2		5	
26	070700010905	Bear Creek-Tomahawk R.	90	66.4	1		
27	070700011001	Little Rice Creek	89.9	60.6	3	1	
28	070700010602	Pine Lake Creek	89.4	58.7		1	
29	070700021204	West Branch of the Eau Claire R.	89.3	57.6		2	
30	070700010501	Lost Creek-Big St. Germain Lake	89.2	60.0		1	
31	070700020101	East and Center Forks New Wood R.	89.2	68.7		3	
32	070700010906	Bearskin Creek	89.1	59.9		1	
33	070700010701	Monico Creek	88.5	62.0			1
34	070700010902	Swamsauger Creek	88.5	62.3			
35	070700011202	Spirit R.	88.5	63.2		2	
36	070700010402	Sugar Camp Creek	88.2	59.5	5		
37	070700010102	Blackjack Creek	87.7	65.3	2		
38	070700010201	Headwaters-Eagle R.	87.4	62.8			4
39	070700011204	Spirit R. Flowage	87.4	57.5		2	
40	070700011103	Little Somo R.	87.3	55.4			
41	070700010703	Twin Lakes Creek	87	63.0		1	1
42	070700010708	Lower Pelican R.	86.3	55.9	1	1	4
43	070700020801	Wood Creek	86.2	61.3			
44	070700011003	Rice R. Flowage	85.9	61.7		1	
45	070700010308	Sucker Creek-Wisconsin R.	85.8	64.8	1	1	
46	070700020802	Lemke Creek	85.7	60.9			
47	070700010401	Mud Creek	85.6	63.4			3
48	070700011203	Squaw Creek	85.5	60.5		1	
49	070700011303	Green Meadow Creek	85.5	67.5			
50	070700020303	Big Hay Meadow Creek	85.5	62.0		3	
51	070700010103	Little Deerskin R.	85.4	62.7	1	1	1
52	070700011302	Crescent Creek-Wisconsin R.	85.2	58.3	2	1	
53	070700020404	Joe Snow Creek-Wisconsin R.	85.2	55.8	1	2	
54	070700010802	Tomahawk Lake-Tomahawk R.	84.9	59.4	4		
55	070700020202	Middle and South Forks Copper R.	84.9	60.9		2	
56	070700010303	Tamarack Creek	84.6	59.6	1		
57	070700010903	Willow Reservoir	84.6	56.0		1	
58	070700010301	Portage Creek	84.3	65.4	3	1	
59	070700010603	Rhinelandr Flowage	84.3	62.7	1	2	
60	070700010503	Gilmore Creek	84	58.3			1
61	070700010801	Arbor Vitae Lakes	84	59.6	2		1
62	070700010702	Upper Pelican R.	83.9	57.4		1	
63	070700020501	Upper Pine R.	83.8	66.1		5	
64	070700020306	Lower Prairie R.	83.7	62.1		1	
65	070700010307	Rice Creek	83.5	60.2	1	1	2
66	070700010502	Plum Creek-Big St. Germain Lake	82.5	58.4	7	1	2
67	070700010706	North Branch Pelican R.	82.1	61.7			
68	070700010805	Kaubashine Creek	82.1	62.7	2		
69	070700010804	Squirrel R.	82	57.6	1	1	
70	070700020503	Middle Pine R.	81.6	60.5		3	
71	070700030101	Headwaters of the Plover R.	80.7	69.1		1	
72	070700020502	North Branch of the Pine R.	79.1	59.3		1	
73	070700021805	Little Eau Claire R.	79	55.1		1	
74	070700031401	Meadow Valley-Beaver Creek	79	63.0		1	3
75	070700011101	Brant Creek	78.7	59.1			
76	070700011105	Hay Creek-Somo R.	78.6	54.9		1	
77	070700021202	Black Brook	78.6	58.1			
78	070700030103	Jordan Pond-Plover R.	78.5	63.3	1	1	
79	070700011306	Lake Mohawksin-Wisconsin R.	78.4	55.3	1		
80	070700010404	Rainbow Flowage-Wisconsin R.	78	62.1		1	
81	070700030802	Dead Horse Creek	77.9	59.1			
82	070700030903	Carter Creek	77.9	61.9		1	
83	070700020804	Mink Creek-Big Rib R.	77.4	52.3		3	
84	070700031506	Jay Creek-East Fork of the Lemonweir R.	77.2	61.8			
85	070700021203	Antigo Flats-East Branch Eau Claire R.	77.1	64.7			
86	070700030804	Lower Big Roche a Cri Creek	76.9	62.7		1	
87	070700011004	Lake Nokomis	76.7	61.6	2	1	
88	070700020601	Prospect Creek-Trappe R.	76.7	58.2			
89	070700031402	Eagle Nest Flowage-Beaver Creek	76.4	55.7	1	1	3
90	070700020203	Copper R. Outlet	75.9	57.5		2	
91	070700030902	Bingham Creek	75.9	61.9			1
92	070700031201	Upper Cranberry Creek	75.9	58.0		1	
93	070700010204	Ninemile Creek-Eagle R.	75.8	57.1	1	1	3

62 High-Quality Lakes in Top 30% Healthiest Watersheds
92 High-Quality Lakes in HUC6 Watershed
67% High-Quality Lakes are within the Healthiest Watersheds
96 High-Quality Streams in Top 30% Healthiest Watersheds
324 High-Quality Streams in HUC6 Watershed
30% High-Quality Streams are within the Healthiest Watersheds



Watershed Features
Ecological Health Score & ID
Healthiest
● High Quality Wetlands
— High Quality Waters

The top 30% healthiest watersheds in the HUC6 were selected to identify watershed protection priorities based on the ecological health score. High quality lakes and streams (based on waterbody identification code - WBIC), and high quality wetlands were then summed within each of the watersheds.

Watersheds are ranked and color-coded by ecological health score.



Watershed Protection Priorities

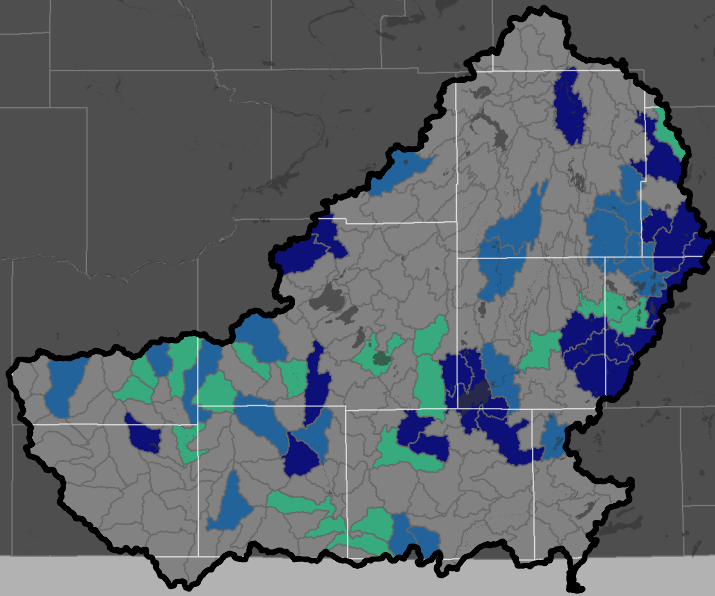


Wisconsin - HUC 070700

RANK & MAP ID	HUC12 NUMBER	HUC12 NAME	ECOLOGICAL HEALTH SCORE	PROTECTION PRIORITY SCORE	HIGH-QUALITY LAKES	HIGH-QUALITY RIVERS	HIGH-QUALITY WETLANDS
94	70700060507	Kickapoo R.	75.7	60.0		1	
95	70700021802	Bull Junior Creek	75.5	57.6			
96	70700020602	Little Trappe R.-Trappe R.	75.4	62.5		1	
97	70700030301	Hay Meadow Creek	75.4	60.7			3
98	70700010305	Pioneer Creek	75.2	55.7	2	2	
99	70700020803	Silvernagel Creek-Big Rib R.	75.1	57.6		1	
100	70700020806	Baldwin Creek-Big Rib R.	74.9	52.4		1	
101	70700051707	Clear Creek-Wisconsin R.	74.6	59.1		2	2
102	70700010705	Headwaters-North Branch Pelican R.	74	53.6			
103	70700031804	Juneau County Ditch	74	60.0			
104	70700010306	Buckatabon Creek	73.9	56.3	2	1	
105	70700031301	Mead Marsh-Yellow R.	73.7	59.0		1	1
106	70700020504	Lower Pine R.	73.5	56.5		4	
107	70700020305	Lilly Hay Meadow Creek	73.3	53.3			
108	70700021301	Mole Brook-Eau Claire R.	73.3	57.5		2	
109	70700031903	Plainville Creek-Wisconsin R.	73	69.9		4	
110	70700010803	Mishonagon Creek-Tomahawk R.	72.6	54.4	7	1	4

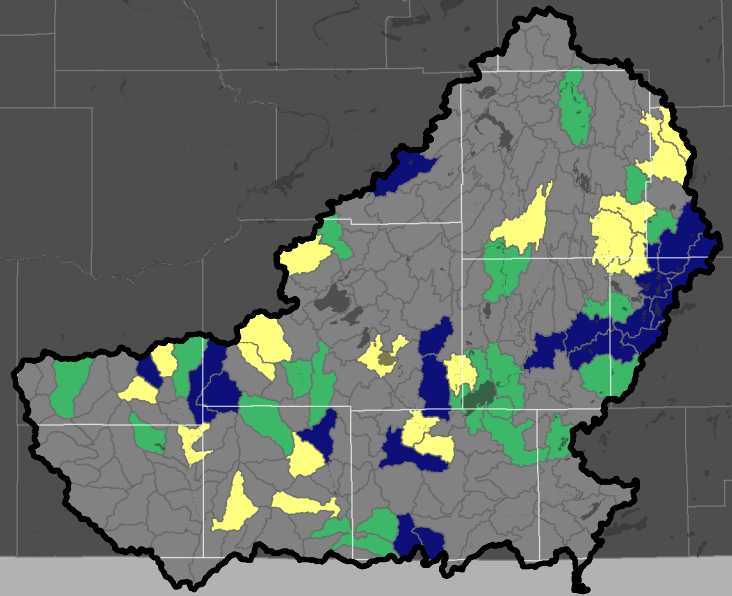
Watershed Protection Priorities

Rock - HUC6 (070900)



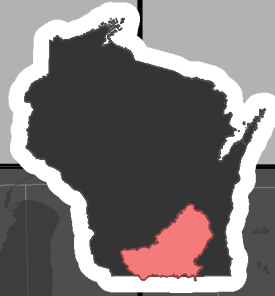
Ecological Health - Top 30%

High —————> Highest

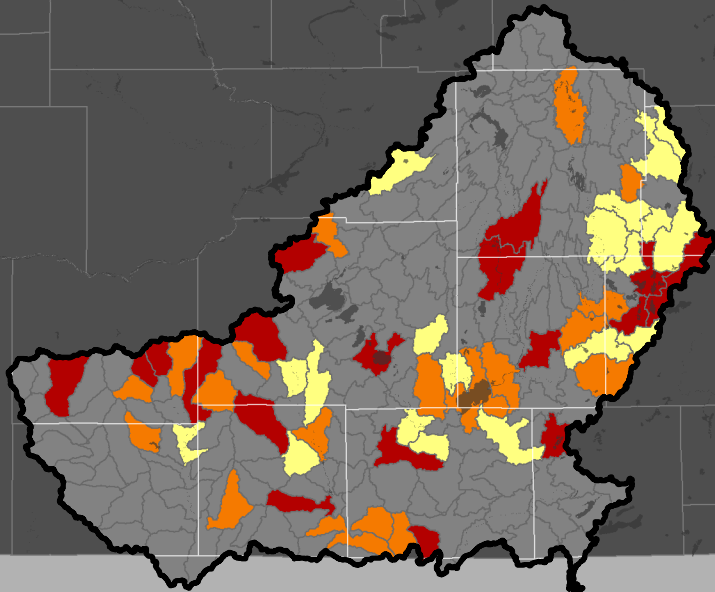


Opportunities

Lower —————> Higher

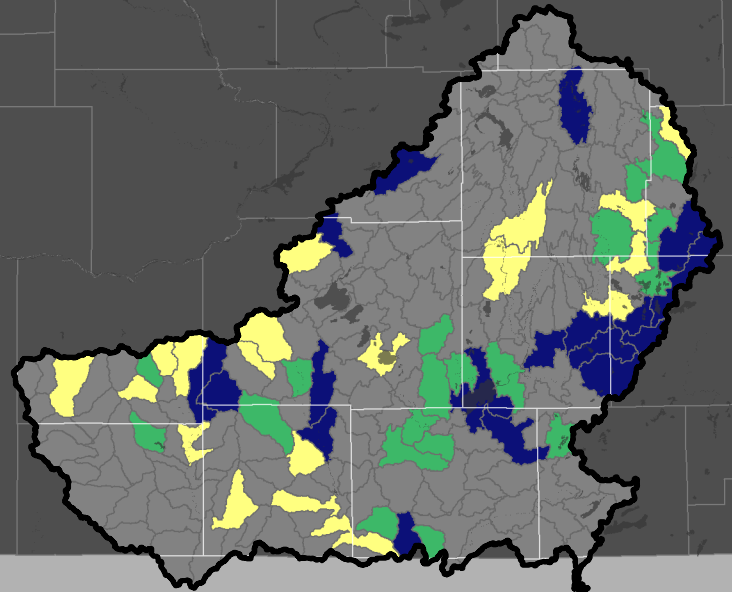


*Only WI portion of Rock HUC6 depicted in map



Vulnerability

Lower —————> Higher



Protection Potential

Lower —————> Higher



The top 30% healthiest watersheds are first identified, then the opportunities and vulnerability are overlaid upon those healthiest watersheds to identify the protection potential of the healthiest watersheds.

$$\text{Protection Potential} = (\text{Eco} + \text{Opp}) - \text{Vulnerability}$$



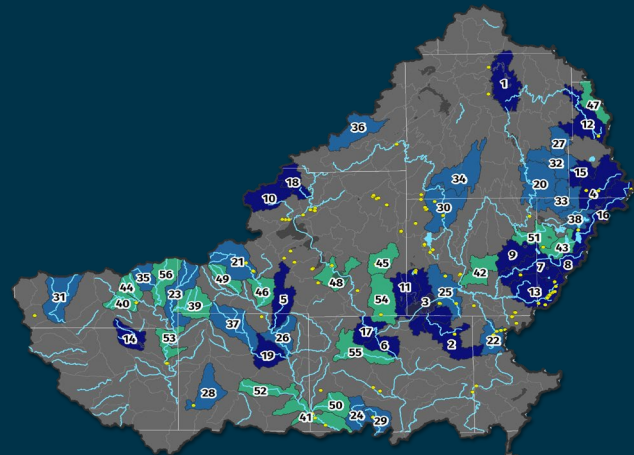
Watershed Protection Priorities



Rock - HUC 070900

RANK & MAP ID	HUC12 NUMBER	HUC12 NAME	ECOLOGICAL HEALTH SCORE	PROTECTION PRIORITY SCORE	HIGH-QUALITY LAKES	HIGH-QUALITY RIVERS	HIGH-QUALITY WETLANDS
1	070900010207	Horicon Marsh	66.9	55.7			2
2	070900021002	Otter Creek	65.9	55.7			1
3	070900021003	Lake Koshkonong-Rock R.	63.5	56.7	1	1	2
4	070900010501	Little Oconomowoc R.-Oconomowoc R.	59.4	57.7		1	3
5	070900040501	Story Creek	57.9	55.8		1	1
6	070900021302	Camp Indian Trails-Rock R.	57.6	50.7		1	1
7	070900020305	Rome Pond-Bark R.	57.5	62.2	1	1	1
8	070900020302	Scuppernong Creek	57.1	59.4		1	1
9	070900020304	Duck Creek	55.6	56.3	1		
10	070900020601	Waunakee Marsh-Sixmile Creek	54.7	48.9		1	
11	070900020405	Koshkonong Creek	53.9	50.2			
12	070900010105	Limestone Creek-East Branch Rock R.	52.9	49.6		2	
13	070900020101	Mud Creek-Scuppernong Creek	52.7	53.2	1	3	11
14	070900030702	Middle Yellowstone R.	52.7	50.2		2	
15	070900010602	Druid Lake-Ashippun R.	52	50.7	1		
16	070900020301	Headwaters Bark R.	51.9	56.8	1	1	2
17	070900020905	Yahara R.	51.5	49.0		1	1
18	070900020502	100 Mile Grove Cemetary	49.7	52.7		1	1
19	070900040404	Little Sugar R.	49.6	48.3		1	1
20	070900010604	Mud Creek-Rock R.	48.9	49.3		1	1
21	070900040202	Headwaters Sugar R.	48.6	47.1		2	4
22	070900020202	Whitewater Lake-Whitewater Creek	48.5	49.9	1	2	6
23	070900030502	Blue Mounds Branch	48.4	53.1		2	2
24	070900031501	Headwaters Raccoon Creek	48.4	53.2		1	1
25	070900021001	Fort Atkinson-Rock R.	48.3	49.1		2	4
26	070900040503	Gill Creek-Sugar R.	48.3	52.7		2	2
27	070900010301	Butler Creek	48	52.0			
28	070900031003	Skinner Creek	48	46.7			1
29	070900031502	East Fork Raccoon Creek	48	52.1		1	1
30	070900011004	Chub Lake-Crawfish R.	47.5	45.6		1	5
31	070900030101	East Pecatonica R.	47.3	47.8		2	2
32	070900010303	Rubicon R.	47.2	48.2			
33	070900010603	Ashippun R.	46.9	47.9			
34	070900010909	Beaver Dam R.	46.9	46.4			
35	070900030601	Ridgeway Branch	46.9	46.9		1	
36	070900010702	Headwaters North Branch Crawfish R.	46.7	52.5			
37	070900040402	Ward Creek-Little Sugar R.	46.6	50.8		3	
38	070900010502	Okauchee Lake-Oconomowoc R.	46.3	50.2	2	1	
39	070900030501	Pleasant Branch	46.2	52.7		3	
40	070900030403	Gribble Branch-Dodge Branch	45.8	47.0		4	2
41	070900040705	OK Creek-Sugar R.	45.5	48.9		1	2
42	070900011104	Deer Creek	45.4	52.5			
43	070900020303	Nemahbin Lake-Bark R.	45.4	57.2	2	1	
44	070900030402	Conley Lewis Creek	45	51.4		2	
45	070900020402	Mud Creek	44.7	52.0			1
46	070900040203	Paoli-Sugar R.	44.7	51.0		2	
47	070900010102	Kohlsville Branch	44.4	45.8			
48	070900020902	Lake Kegonsa-Yahara R.	43.8	45.9		1	2
49	070900040101	Mt. Vernon Creek	43.6	44.7		3	1
50	070900040702	Willow Creek	43.5	50.5		1	
51	070900010504	Oconomowoc R.	43.4	47.5		1	
52	070900040604	Sylvester Creek	43.4	44.6		1	
53	070900030802	Brennan Creek-E Branch Pecatonica R.	43.3	45.1		1	
54	070900021005	Saunders Creek	43.2	51.7			1
55	070900021301	Marsh Creek	42.7	51.0		1	
56	070900030602	Williams Creek-E Branch Pecatonica R.	42.6	46.7		1	

- 11** High-Quality Lakes in Top 30% Healthiest Watersheds
- 16** High-Quality Lakes in HUC6 Watershed
- 69%** High-Quality Lakes are within the Healthiest Watersheds
- 53** High-Quality Streams in Top 30% Healthiest Watersheds
- 95** High-Quality Streams in HUC6 Watershed
- 56%** High-Quality Streams are within the Healthiest Watersheds



Watershed Features

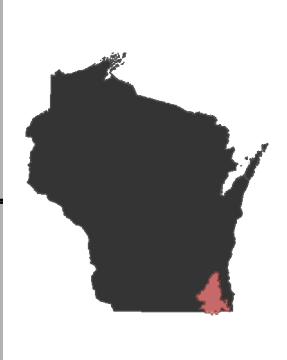
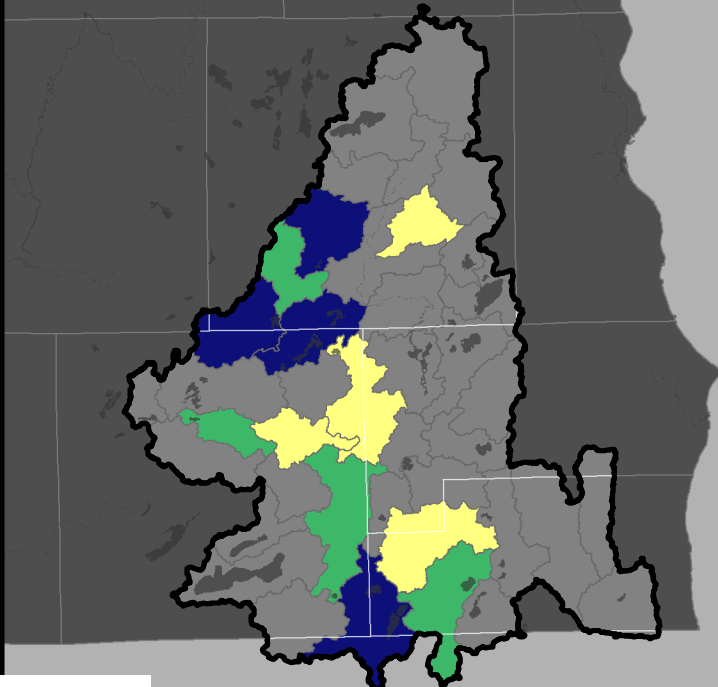
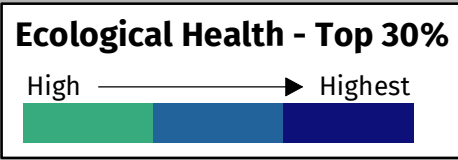
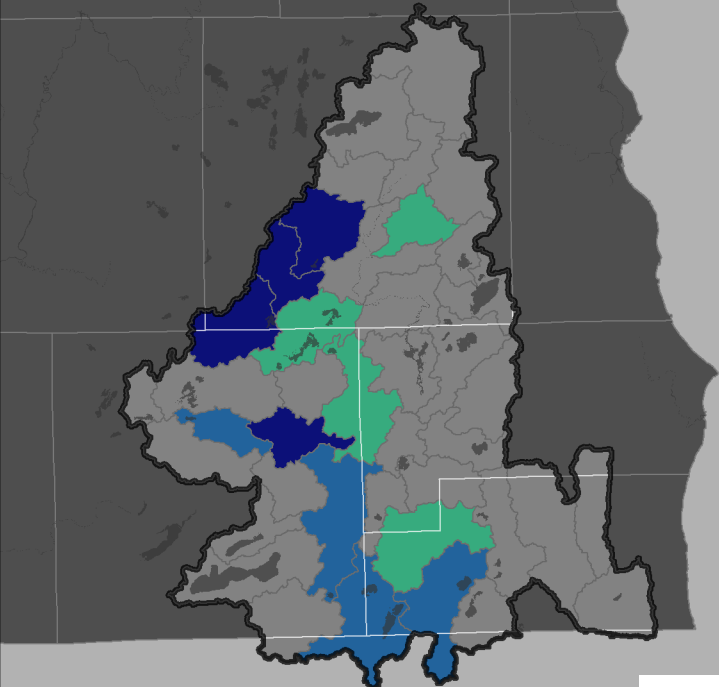
- Ecological Health Score & ID
- Healthiest
- High Quality Wetlands
- High Quality Waters

The top 30% healthiest watersheds in the HUC6 were selected to identify watershed protection priorities based on the ecological health score. High quality lakes and streams (based on waterbody identification code - WBIC), and high quality wetlands were then summed within each of the watersheds.

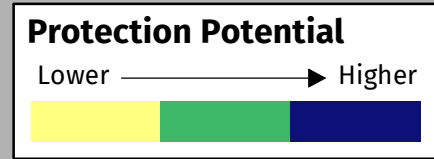
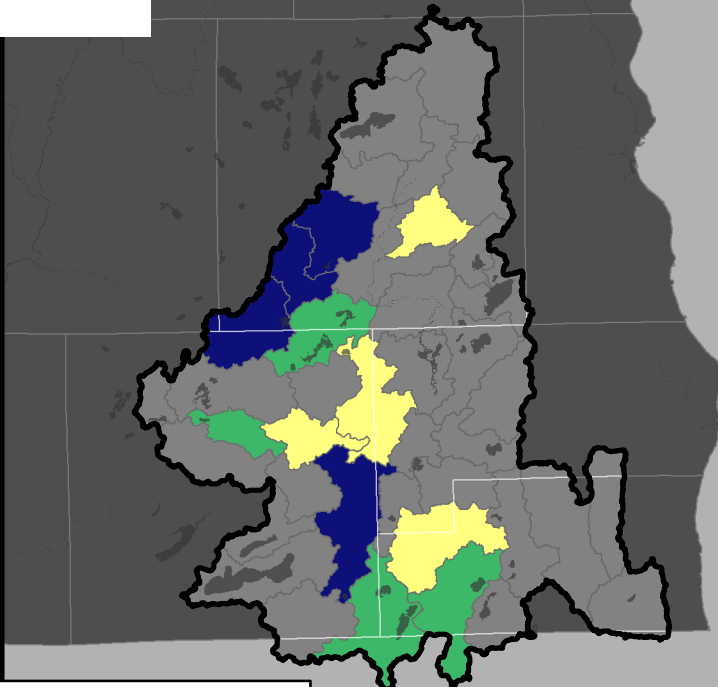
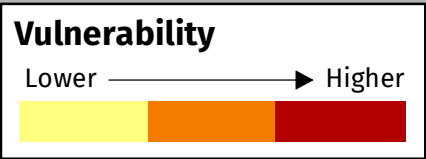
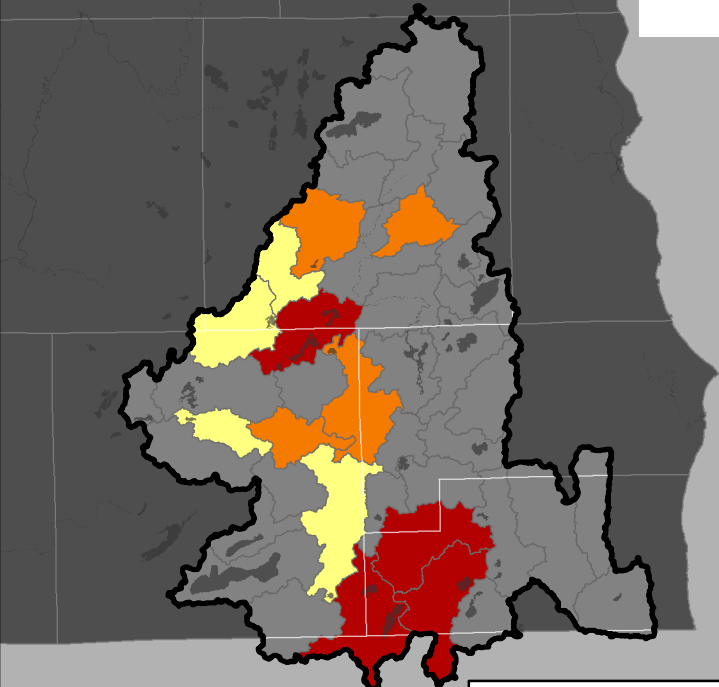
Watersheds are ranked and color-coded by ecological health score.

Watershed Protection Priorities

Upper Illinois - HUC6 (071200)



Only WI portion of Upper Illinois HUC6 depicted in map



The top 30% healthiest watersheds are first identified, then the opportunities and vulnerability are overlaid upon those healthiest watersheds to identify the protection potential of the healthiest watersheds.

Protection Potential = (Eco + Opp) - Vulnerability



RANK & MAP ID	HUC12 NUMBER	HUC12 NAME	ECOLOGICAL HEALTH SCORE	PROTECTION PRIORITY SCORE	HIGH-QUALITY LAKES	HIGH-QUALITY RIVERS	HIGH-QUALITY WETLANDS
1	071200060202	Eagle Spring Lake	68.3	64.9	2	1	11
2	071200060201	Jericho Creek	58.4	58.4			1
3	071200060404	Sugar Creek	58.3	52.1			1
4	071200060701	Genesee Creek	57.6	58.8	1	3	2
5	071200060802	North Branch Nippersink Creek	56	57.5			
6	071200060604	White River	54.5	58.1			
7	071200060403	Lake Wandawega-Sugar Creek	54.2	57.4	1		
8	071200061006	Bassett Creek-Fox R.	53.6	52.4	2		1
9	071200060203	Mukwonago R.	52.7	57.0	2	1	7
10	071200060702	Pebble Brook	51	49.0			1
11	071200060503	Honey Creek	50.8	51.2			1
12	071200061003	Palmer Creek-Fox R.	48.8	49.8			3

8 High-Quality Lakes in Top 30% Healthiest Watersheds

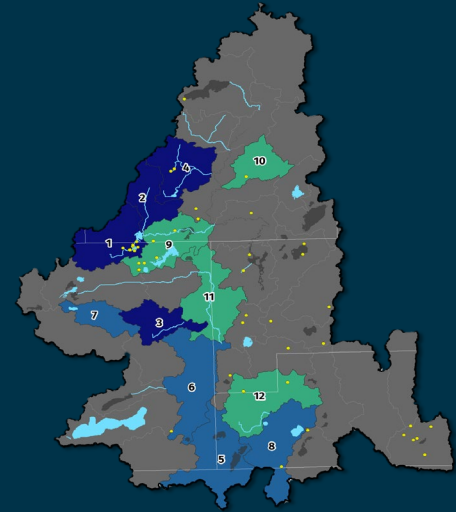
13 High-Quality Lakes in HUC6 Watershed

62% High-Quality Lakes are within the Healthiest Watersheds

9 High-Quality Streams in Top 30% Healthiest Watersheds

14 High-Quality Streams in HUC6 Watershed

64% High-Quality Streams are within the Healthiest Watersheds



Watershed Features

Ecological Health Score & ID

Healthiest

High Quality Wetlands

High Quality Waters

The top 30% healthiest watersheds in the HUC6 were selected to identify watershed protection priorities based on the ecological health score. High quality lakes and streams (based on waterbody identification code - WBIC), and high quality wetlands were then summed within each of the watersheds.