

WISCONSIN DEPARTMENT OF NATURAL RESOURCES

Wisconsin's 2022 Open Water Sportfishing Effort And Harvest From Lake Michigan And Green Bay

MAY 2023

WRITTEN BY

LAURA SCHMIDT

DNR Fisheries Management
Southern Lake Michigan Fisheries Work Unit
600 E. Greenfield Ave.
Milwaukee, WI 53204

OVERVIEW

The Wisconsin Department of Natural Resources (DNR) documented the sport fishery in Wisconsin waters of Lake Michigan and Green Bay from March 2022 through November 2022. Fishing effort, harvest and harvest rates were determined from 1) a stratified-random creel survey of launched-boat, pier, shore and stream anglers; 2) a randomized mail survey of moored-boat anglers; and 3) mandatory charter-boat reporting. For a detailed description of methods, see Eggold, 1995.

RESULTS

Anglers spent an estimated 2,489,286 hours fishing on Lake Michigan and Green Bay during 2022, with boat-angler effort at 2,063,188 hours or 83% of the total hours. The estimated angler hours for the pier fishery were 86,733 hours, 70,561 angler hours for the shore fishery and 268,804 hours for the stream fishery. Fishing effort during 2022 was within 2% of the ten-year average.

The estimated harvest of 599,252 fish was dominated by yellow perch (156,880), followed by walleye (133,239). The combined walleye and yellow perch harvest was 48% of the total estimated harvest. The boat fishery, comprised of launched-boat, moored-boat and charter-boat anglers, dominated the fishery by harvesting an estimated 538,392 fish or 90% of the total harvest and was again led by yellow perch (144,526), followed by walleye (117,675). Pier anglers harvested 5,731 fish, primarily yellow perch (2,647), followed by Chinook salmon (1,427). Stream anglers harvested 44,462 fish, dominated by walleye (15,413) and followed by Chinook salmon (11,224). Shore anglers harvested 10,598 fish, primarily yellow perch (5,528), followed by coho salmon (1,859) and Chinook salmon (1,439).

Overall harvest rates were highest for yellow perch at 0.0630 fish/hour, followed by walleye (0.0535 fish/hour) and Chinook salmon (0.0483 fish/hour). These three species have had the highest harvest rates for the past four years.

The 2022 Chinook harvest of 120,148 fish was the highest Chinook harvest on record since 2016 and approximately 13% above the ten-year average. The overall harvest rate for salmonids in 2022 was 0.1174, which is slightly above the ten-year average harvest rate of 0.1129.

Coho harvest in 2022 was 104,692 fish, the highest on record since 2017 and approximately 36% higher than the ten-year average. The 2022 rainbow trout harvest of 35,304 fish decreased from 2021 and was approximately 40% below the ten-year average. Brown trout harvest in 2022 was 9,013 fish, 39% below the ten-year average. A total of 23,067 lake trout were harvested in 2022, which was a decrease from 2021. The ten-year average lake trout harvest was 29,027 fish. A total of eight brook trout were harvested in 2022. Brook trout have been stocked in two Lake Michigan tributaries since 2020.

The 2022 harvest of yellow perch in Green Bay was 151,037, a decrease from 2021 but still above the ten-year average harvest. The Lake Michigan yellow perch harvest in 2022 was 5,843 fish, an increase from 2021 and the highest Lake Michigan yellow perch harvest since 2015. Perch harvest in Lake Michigan remains on an overall downward trend observed since 1993.

In 2022, the standard weight of a 30-inch Chinook was 9.6 pounds, which was approximately 5% below the ten-year average. The standard weight of a 23-inch coho was 4.4 pounds, which was approximately 9% above the ten-year average. The standard weight of a 25-inch rainbow trout was 4.6 pounds, which was 10% above the ten-year average. The standard weight of a 27-inch lake trout was 6.3 pounds, an increase from 2021 and approximately 8% above the ten-year average.

REFERENCES

Eggold, B.T. 1995. Wisconsin's 1995 open water sportfishing effort and catch from Lake Michigan and Green Bay. Wisconsin Department of Natural Resources, Plymouth, Wisconsin. 18 pages.

Table 1. Estimated angler effort (hours) by location in Wisconsin waters of Lake Michigan and Green Bay during March through December of 2013 through 2022*. Standard deviations are in italics.

Location	2013	2014	2015	2016	2017	2018	2019	2020	2021	2022	Average
Kenosha Co.	128,467 <i>5,199</i>	129,736 <i>5,422</i>	101,058 <i>4,990</i>	108,874 <i>5,432</i>	90,700 <i>3,810</i>	92,655 <i>4,185</i>	99,315 <i>4,417</i>	91,284 <i>4,797</i>	113,635 <i>7,514</i>	87,191 <i>4,069</i>	104,292 <i>5,083</i>
Racine Co.	121,473 <i>8,394</i>	122,082 <i>7,073</i>	102,948 <i>9243</i>	106,901 <i>7,928</i>	95,490 <i>6,787</i>	110,575 <i>11,954</i>	98,387 <i>6,374</i>	78,832 <i>6,721</i>	93,231 <i>5,784</i>	95,394 <i>8,166</i>	102,531 <i>8,023</i>
Milwaukee Co.	290,544 <i>11,332</i>	255,140 <i>10,894</i>	267,451 <i>10,279</i>	295,517 <i>12,743</i>	267,191 <i>14,736</i>	233,031 <i>13,192</i>	180,123 <i>8,028</i>	179,950 <i>10,877</i>	217,505 <i>8,552</i>	194,492 <i>12,092</i>	238,094 <i>11,439</i>
Ozaukee Co.	203,861 <i>9,749</i>	189,524 <i>9,532</i>	172,896 <i>8,481</i>	215,153 <i>13,880</i>	179,360 <i>13,185</i>	167,683 <i>10,435</i>	156,411 <i>10,337</i>	160,473 <i>8,465</i>	175,610 <i>9,436</i>	194,123 <i>14,724</i>	181,509 <i>11,034</i>
Sheboygan Co.	205,563 <i>9,122</i>	214,111 <i>10,191</i>	216,378 <i>11,974</i>	210,632 <i>11,803</i>	179,246 <i>9,027</i>	163,946 <i>9,813</i>	176,289 <i>16,500</i>	148,393 <i>9,720</i>	175,574 <i>10,928</i>	213,660 <i>12,679</i>	190,379 <i>11,377</i>
Manitowoc Co.	177,336 <i>8,230</i>	187,654 <i>9,404</i>	168,961 <i>8,303</i>	183,440 <i>10,233</i>	139,241 <i>7,010</i>	141,366 <i>8,009</i>	132,408 <i>6,735</i>	141,855 <i>12,574</i>	157,011 <i>9,201</i>	162,635 <i>9,750</i>	159,191 <i>9,090</i>
Kewaunee Co.	372,305 <i>14,837</i>	352,498 <i>15,032</i>	367,149 <i>15,581</i>	288,935 <i>13,131</i>	318,589 <i>13,337</i>	327,150 <i>13,794</i>	222,088 <i>9,598</i>	236,238 <i>11,413</i>	255,212 <i>11,511</i>	248,542 <i>13,922</i>	298,871 <i>13,335</i>
E. Door Co.	195,887 <i>12,008</i>	172,324 <i>8,761</i>	218,354 <i>19,796</i>	204,769 <i>10,839</i>	193,014 <i>9,108</i>	187,941 <i>10,802</i>	181,342 <i>12,741</i>	127,333 <i>10,704</i>	200,707 <i>11,516</i>	161,460 <i>11,385</i>	184,313 <i>13,696</i>
Green Bay	1,084,541 <i>45,814</i>	990,101 <i>46,164</i>	1,127,400 <i>36,334</i>	1,016,928 <i>35,232</i>	1,087,056 <i>40,209</i>	1,032,530 <i>34,218</i>	1,115,720 <i>38,818</i>	799,727 <i>30,260</i>	1,345,874 <i>43,556</i>	1,131,789 <i>41,711</i>	1,073,167 <i>39,546</i>
Total Effort	2,779,977 <i>54,178</i>	2,613,170 <i>53,991</i>	2,742,595 <i>49,548</i>	2,631,149 <i>47,145</i>	2,549,887 <i>49,597</i>	2,456,877 <i>45,624</i>	2,362,083 <i>48,065</i>	1,964,085 <i>40,880</i>	2,734,359 <i>51,171</i>	2,489,286 <i>52,586</i>	2,532,347 <i>49,431</i>

*Note: Sport fishing estimates for 2020 are for May – December only.

Table 2. Estimated harvest and total harvest rate (number per hour, all anglers combined) of salmonids in Wisconsin waters of Lake Michigan and Green Bay during March through December of 2013 through 2022*. Standard deviations are in italics.

Species	2013	2014	2015	2016	2017	2018	2019	2020	2021	2022	Average
Coho Salmon	88,933 <i>3,922</i>	52,297 <i>6,577</i>	41,067 <i>4,339</i>	125,748 <i>5,572</i>	119,788 <i>7,135</i>	85,459 <i>5,176</i>	32,197 <i>2,003</i>	40,349 <i>2,585</i>	80,009 <i>4,716</i>	104,692 <i>6,842</i>	77,054 <i>4,784</i>
Chinook Salmon	144,807 <i>4,330</i>	130,231 <i>3,562</i>	114,528 <i>3,549</i>	138,110 <i>4,725</i>	84,163 <i>3,132</i>	84,228 <i>3,262</i>	63,043 <i>4,012</i>	80,890 <i>3,782</i>	100,323 <i>3,552</i>	120,148 <i>4,701</i>	106,047 <i>4,603</i>
Rainbow Trout	58,429 <i>1,978</i>	72,724 <i>2,259</i>	59,127 <i>1,714</i>	77,004 <i>2,962</i>	66,599 <i>2,661</i>	57,141 <i>2,011</i>	50,258 <i>3,105</i>	54,430 <i>1,996</i>	58,597 <i>2,814</i>	35,304 <i>1,644</i>	58,961 <i>2,452</i>
Brown Trout	17,052 <i>1,273</i>	23,511 <i>1,813</i>	20,335 <i>1,894</i>	23,885 <i>2,632</i>	20,404 <i>1,715</i>	12,625 <i>1,116</i>	8,013 <i>969</i>	3,317 <i>519</i>	9,178 <i>1,742</i>	9,013 <i>1,276</i>	14,733 <i>1,642</i>
Brook Trout	0 <i>0</i>	0 <i>0</i>	0 <i>0</i>	0 <i>0</i>	0 <i>0</i>	0 <i>0</i>	0 <i>0</i>	0 <i>0</i>	0 <i>0</i>	8 <i>0</i>	1 <i>0</i>
Lake Trout	27,246 <i>1,003</i>	25,424 <i>1,098</i>	35,778 <i>1,482</i>	19,046 <i>865</i>	20,345 <i>1,115</i>	26,747 <i>1,236</i>	34,197 <i>2,438</i>	38,271 <i>1,645</i>	40,145 <i>1,859</i>	23,067 <i>1,216</i>	29,027 <i>1,470</i>
Total Harvest	336,467 <i>6,406</i>	304,187 <i>8,104</i>	270,835 <i>6,285</i>	383,793 <i>8,356</i>	311,299 <i>8,484</i>	266,200 <i>6,652</i>	187,708 <i>6,052</i>	217,257 <i>5,286</i>	288,252 <i>7,019</i>	292,232 <i>8,644</i>	285,823 <i>7,411</i>
Harvest Rate	0.121	0.1164	0.0988	0.1459	0.1221	0.1083	0.0795	0.1106	0.1054	0.1174	0.1129

*Note: Sport fishing estimates for 2020 are for May – December only.

Table 3. Estimated harvest and total harvest rate (number per hour, all anglers combined) of yellow perch in Wisconsin waters of Lake Michigan and Green Bay during March through December of 2013 through 2022*. Standard deviations are in italics.

Location	2013	2014	2015	2016	2017	2018	2019	2020	2021	2022	Average
Green Bay	221,158	117,012	98,263	76,281	117,412	115,896	84,200	253,278	258,025	151,037	149,051
	<i>18,974</i>	<i>12,283</i>	<i>10,029</i>	<i>9,289</i>	<i>12,404</i>	<i>11,044</i>	<i>15,389</i>	<i>21,751</i>	<i>19,871</i>	<i>13,538</i>	<i>15,794</i>
Harvest-Rate	0.2039	0.1182	0.0872	0.075	0.108	0.1122	0.0755	0.3167	0.1917	0.1334	0.1481
Lake Michigan	8,796	9,277	5,257	2,089	2,481	4,026	3,600	2,013	3,676	5,843	5,033
	<i>1,221</i>	<i>1,108</i>	<i>1,000</i>	<i>586</i>	<i>537</i>	<i>787</i>	<i>882</i>	<i>674</i>	<i>1,232</i>	<i>2,336</i>	<i>1,123</i>
Harvest-Rate	0.0052	0.0057	0.0033	0.0013	0.0017	0.0028	0.0029	0.0017	0.0026	0.0043	0.0032
Total Harvest	229,954	126,289	103,520	78,370	119,893	119,922	87,800	255,291	261,701	156,880	178,704
	<i>19,013</i>	<i>12,333</i>	<i>10,079</i>	<i>9,307</i>	<i>12,416</i>	<i>11,072</i>	<i>15,414</i>	<i>21,761</i>	<i>19,909</i>	<i>13,738</i>	<i>15,082</i>
Harvest Rate	0.0827	0.0483	0.0377	0.0298	0.047	0.0488	0.0372	0.13	0.0957	0.0630	0.0620

Note: Table 3 reflects that some Door County sites represent Green Bay for yellow perch harvest statistics.

*Note: Sport Fishing estimates for 2020 are for May – December only.

Table 4. Estimated harvest rate (harvest per hour), harvest and effort for all survey areas and **ALL FISHERY TYPES** for Wisconsin waters of Lake Michigan and Green Bay during 2022. Standard deviations are in italics.

Species	Harvest per hour	March/April	May	June	July	August	Sept/Oct	Nov/Dec	Season
Coho Salmon	0.0421	744 <i>194</i>	32,631 <i>5,769</i>	38,840 <i>3,083</i>	17,378 <i>1,668</i>	6,608 <i>580</i>	8,491 <i>928</i>	0 <i>0</i>	104,692 <i>6,842</i>
Chinook Salmon	0.0483	0 <i>0</i>	1,001 <i>276</i>	5,864 <i>589</i>	48,920 <i>3,003</i>	35,337 <i>2,686</i>	29,025 <i>2,334</i>	1 <i>0</i>	120,148 <i>4,701</i>
Rainbow Trout	0.0142	3,366 <i>529</i>	832 <i>228</i>	3,343 <i>330</i>	13,209 <i>907</i>	7,470 <i>1,008</i>	7,084 <i>652</i>	0 <i>0</i>	35,304 <i>1,644</i>
Brown Trout	0.0036	4,806 <i>1,231</i>	503 <i>156</i>	288 <i>143</i>	794 <i>192</i>	564 <i>96</i>	2,058 <i>147</i>	0 <i>0</i>	9,013 <i>1,276</i>
Brook Trout	0.0000	0 <i>0</i>	8 <i>0</i>	0 <i>0</i>	0 <i>0</i>	0 <i>0</i>	0 <i>0</i>	0 <i>0</i>	8 <i>0</i>
Lake Trout	0.0093	25 <i>5</i>	763 <i>146</i>	4,015 <i>359</i>	9,736 <i>793</i>	5,097 <i>739</i>	3,416 <i>392</i>	15 <i>0</i>	23,067 <i>1,216</i>
Northern Pike	0.0022	1,512 <i>833</i>	904 <i>296</i>	397 <i>280</i>	549 <i>280</i>	400 <i>160</i>	1,738 <i>912</i>	0 <i>0</i>	5,500 <i>1,340</i>
White Perch	0.0015	0 <i>0</i>	39 <i>39</i>	3,227 <i>1,750</i>	40 <i>40</i>	41 <i>39</i>	446 <i>412</i>	0 <i>0</i>	3,793 <i>1,799</i>
Smallmouth Bass	0.0031	0 <i>0</i>	247 <i>107</i>	3,250 <i>808</i>	1,542 <i>1,009</i>	2,255 <i>849</i>	314 <i>156</i>	0 <i>0</i>	7,608 <i>1,558</i>
Yellow Perch	0.0630	251 <i>240</i>	5,268 <i>1,976</i>	17,917 <i>3,282</i>	26,583 <i>4,150</i>	39,432 <i>9,041</i>	65,824 <i>8,579</i>	1,605 <i>1,184</i>	156,880 <i>13,737</i>
Walleye	0.0535	16,300 <i>5,003</i>	39,234 <i>7,620</i>	13,167 <i>2,507</i>	20,876 <i>4,665</i>	26,837 <i>4,434</i>	15,640 <i>3,571</i>	1,185 <i>827</i>	133,239 <i>12,010</i>
Total Harvest	0.2407	27,004	81,430	90,308	139,627	124,041	134,036	2,806	599,252
Angler Hours		5,255 279,159 <i>19,743</i>	9,774 270,058 <i>18,215</i>	5,564 402,763 <i>17,620</i>	7,306 647,514 <i>31,778</i>	10,548 412,191 <i>20,681</i>	9,710 465,380 <i>16,972</i>	1,444 12,221 <i>2,765</i>	20,375 2,489,286 <i>52,586</i>

Table 5. Estimated harvest rate (harvest per hour), harvest and effort for the **BOAT FISHERY** with all surveys combined for Wisconsin waters of Lake Michigan and Green Bay during 2022. Standard deviations are in italics.

Species	Harvest per hour	March/April	May	June	July	August	Sept/Oct	Nov/Dec	Season
Coho Salmon	0.0482	282	32,367	38,840	17,288	6,504	4,204	0	99,485
		<i>26</i>	<i>5,769</i>	<i>3,083</i>	<i>1,667</i>	<i>578</i>	<i>733</i>	<i>0</i>	<i>6,814</i>
Chinook Salmon	0.0514	0	929	5,864	48,621	34,650	15,993	1	106,058
		<i>0</i>	<i>271</i>	<i>589</i>	<i>3,001</i>	<i>2,680</i>	<i>1,981</i>	<i>0</i>	<i>4,532</i>
Rainbow Trout	0.0135	48	779	3,315	13,139	7,461	3,174	0	27,916
		<i>28</i>	<i>228</i>	<i>329</i>	<i>906</i>	<i>1,008</i>	<i>560</i>	<i>0</i>	<i>1,520</i>
Brown Trout	0.0020	2,053	386	272	722	448	311	0	4,192
		<i>441</i>	<i>140</i>	<i>142</i>	<i>186</i>	<i>80</i>	<i>113</i>	<i>0</i>	<i>537</i>
Brook Trout	0.0000	0	0	0	0	0	0	0	0
		<i>0</i>	<i>0</i>	<i>0</i>	<i>0</i>	<i>0</i>	<i>0</i>	<i>0</i>	<i>0</i>
Lake Trout	0.0111	25	759	3,970	9,696	5,097	3,393	15	22,955
		<i>5</i>	<i>146</i>	<i>358</i>	<i>792</i>	<i>739</i>	<i>391</i>	<i>0</i>	<i>1,215</i>
Northern Pike	0.0025	1,369	843	397	549	329	1,584	0	5,071
		<i>832</i>	<i>293</i>	<i>280</i>	<i>280</i>	<i>154</i>	<i>911</i>	<i>0</i>	<i>1,337</i>
White Perch	0.0018	0	39	3,227	40	0	426	0	3,732
		<i>0</i>	<i>39</i>	<i>1,750</i>	<i>40</i>	<i>0</i>	<i>411</i>	<i>0</i>	<i>1,798</i>
Smallmouth Bass	0.0033	0	169	3,022	1,407	1,998	186	0	6,782
		<i>0</i>	<i>107</i>	<i>800</i>	<i>1,006</i>	<i>841</i>	<i>138</i>	<i>0</i>	<i>1,546</i>
Yellow Perch	0.0700	240	4,860	16,108	25,642	38,470	57,801	1,405	144,526
		<i>240</i>	<i>1,970</i>	<i>3,196</i>	<i>4,131</i>	<i>9,031</i>	<i>8,473</i>	<i>1,173</i>	<i>13,636</i>
Walleye	0.0570	2,545	39,035	13,167	20,876	26,768	15,284	0	117,675
		<i>791</i>	<i>7,619</i>	<i>2,507</i>	<i>4,665</i>	<i>4,433</i>	<i>3,567</i>	<i>0</i>	<i>10,913</i>
Total Harvest	0.2610	6,562	80,166	88,182	137,980	121,725	102,356	1,421	538,392
		<i>1,254</i>	<i>9,771</i>	<i>5,513</i>	<i>7,293</i>	<i>10,537</i>	<i>9,512</i>	<i>1,173</i>	<i>19,583</i>
Angler Hours		155,023	246,506	373,554	616,213	377,548	287,060	7,284	2,063,188
		<i>15,401</i>	<i>18,043</i>	<i>17,409</i>	<i>31,680</i>	<i>20,431</i>	<i>14,988</i>	<i>2,695</i>	<i>50,187</i>

Table 6. Estimated harvest rate (harvest per hour), harvest and effort for the **PIER FISHERY** with all survey areas combined for Wisconsin waters of Lake Michigan and Green Bay during 2022. Standard deviations are in *Italics*.

Species	Harvest per hour	March/April	May	June	July	August	Sept/Oct	Nov/Dec	Season
Coho Salmon	0.0065	80 <i>52</i>	185 <i>74</i>	0 <i>0</i>	90 <i>52</i>	104 <i>50</i>	106 <i>50</i>	0 <i>0</i>	565 <i>126</i>
Chinook Salmon	0.0165	0 <i>0</i>	72 <i>48</i>	0 <i>0</i>	299 <i>108</i>	680 <i>178</i>	376 <i>100</i>	0 <i>0</i>	1,427 <i>236</i>
Rainbow Trout	0.0009	0 <i>0</i>	0 <i>0</i>	0 <i>0</i>	70 <i>47</i>	9 <i>9</i>	0 <i>0</i>	0 <i>0</i>	79 <i>48</i>
Brown Trout	0.0030	0 <i>0</i>	74 <i>65</i>	16 <i>17</i>	21 <i>17</i>	116 <i>53</i>	37 <i>21</i>	0 <i>0</i>	264 <i>90</i>
Brook Trout	0.0000	0 <i>0</i>	0 <i>0</i>	0 <i>0</i>	0 <i>0</i>	0 <i>0</i>	0 <i>0</i>	0 <i>0</i>	0 <i>0</i>
Lake Trout	0.0010	0 <i>0</i>	4 <i>4</i>	17 <i>12</i>	40 <i>40</i>	0 <i>0</i>	23 <i>20</i>	0 <i>0</i>	84 <i>46</i>
Northern Pike	0.0012	59 <i>0</i>	0 <i>0</i>	0 <i>0</i>	0 <i>0</i>	7 <i>6</i>	40 <i>24</i>	0 <i>0</i>	106 <i>25</i>
White Perch	0.0002	0 <i>0</i>	0 <i>0</i>	0 <i>0</i>	0 <i>0</i>	0 <i>0</i>	20 <i>19</i>	0 <i>0</i>	20 <i>19</i>
Smallmouth Bass	0.0053	0 <i>0</i>	0 <i>0</i>	118 <i>89</i>	17 <i>17</i>	216 <i>109</i>	106 <i>70</i>	0 <i>0</i>	457 <i>158</i>
Yellow Perch	0.0305	0 <i>0</i>	174 <i>111</i>	364 <i>187</i>	576 <i>333</i>	501 <i>315</i>	1,032 <i>667</i>	0 <i>0</i>	2,647 <i>838</i>
Walleye	0.0009	20 <i>12</i>	62 <i>63</i>	0 <i>0</i>	0 <i>0</i>	0 <i>0</i>	0 <i>0</i>	0 <i>0</i>	82 <i>84</i>
Total Harvest	0.0661	159 <i>53</i>	571 <i>168</i>	515 <i>208</i>	1,113 <i>360</i>	1,633 <i>385</i>	1,740 <i>681</i>	0 <i>0</i>	5,731 <i>905</i>
Angler Hours		2,471 <i>528</i>	6,421 <i>1,059</i>	7,336 <i>785</i>	17,621 <i>1,853</i>	22,930 <i>2,917</i>	29,954 <i>3,029</i>	0 <i>0</i>	86,733 <i>4,810</i>

Table 7. Estimated harvest rate (harvest per hour), harvest and effort for the **SHORE FISHERY** with all survey areas combined for Wisconsin waters of Lake Michigan and Green Bay during 2022. Standard deviations are in *Italics*.

Species	Harvest per hour	March/April	May	June	July	August	Sept/Oct	Nov/Dec	Season
Coho Salmon	0.0263	382 <i>185</i>	79 <i>44</i>	0 <i>0</i>	0 <i>0</i>	0 <i>0</i>	1,398 <i>344</i>	0 <i>0</i>	1,859 <i>393</i>
Chinook Salmon	0.0204	0 <i>0</i>	0 <i>0</i>	0 <i>0</i>	0 <i>0</i>	7 <i>8</i>	1,432 <i>339</i>	0 <i>0</i>	1,439 <i>339</i>
Rainbow Trout	0.0042	186 <i>65</i>	5 <i>5</i>	28 <i>19</i>	0 <i>0</i>	0 <i>0</i>	78 <i>43</i>	0 <i>0</i>	297 <i>81</i>
Brown Trout	0.0145	888 <i>560</i>	43 <i>27</i>	0 <i>0</i>	51 <i>43</i>	0 <i>0</i>	42 <i>24</i>	0 <i>0</i>	1,024 <i>563</i>
Brook Trout	0.0000	0 <i>0</i>	0 <i>0</i>	0 <i>0</i>	0 <i>0</i>	0 <i>0</i>	0 <i>0</i>	0 <i>0</i>	0 <i>0</i>
Lake Trout	0.0004	0 <i>0</i>	0 <i>0</i>	28 <i>19</i>	0 <i>0</i>	0 <i>0</i>	0 <i>0</i>	0 <i>0</i>	28 <i>19</i>
Northern Pike	0.0036	60 <i>46</i>	61 <i>39</i>	0 <i>0</i>	0 <i>0</i>	64 <i>43</i>	70 <i>37</i>	0 <i>0</i>	255 <i>83</i>
White Perch	0.0000	0 <i>0</i>	0 <i>0</i>	0 <i>0</i>	0 <i>0</i>	0 <i>0</i>	0 <i>0</i>	0 <i>0</i>	0 <i>0</i>
Smallmouth Bass	0.0024	0 <i>0</i>	0 <i>0</i>	110 <i>66</i>	36 <i>34</i>	0 <i>0</i>	22 <i>21</i>	0 <i>0</i>	168 <i>77</i>
Yellow Perch	0.0783	11 <i>11</i>	10 <i>10</i>	1,445 <i>724</i>	333 <i>215</i>	73 <i>38</i>	3,656 <i>12</i>	0 <i>0</i>	5,528 <i>756</i>
Walleye	0.0010	0 <i>0</i>	0 <i>0</i>	0 <i>0</i>	0 <i>0</i>	69 <i>65</i>	65 <i>0</i>	0 <i>0</i>	69 <i>65</i>
Total Harvest	0.1502	1,527 <i>595</i>	198 <i>66</i>	1,611 <i>727</i>	420 <i>222</i>	213 <i>87</i>	6,763 <i>487</i>	0 <i>0</i>	10,598 <i>1,087</i>
Angler Hours		13,225 <i>2,174</i>	4,922 <i>675</i>	7,953 <i>979</i>	7,818 <i>1,292</i>	5,910 <i>787</i>	30,733 <i>2,934</i>	0 <i>0</i>	70,561 <i>4,128</i>

Table 8. Estimated harvest rate (harvest per hour), harvest, and effort for the **STREAM FISHERY** with all survey areas combined for Wisconsin waters of Lake Michigan and Green Bay during 2022. Standard deviations are in *Italics*.

Species	Harvest per hour	March/April	May	June	July	August	Sept/Oct	Nov/Dec	Season
Coho Salmon	0.0102	0 <i>0</i>	0 <i>0</i>	0 <i>0</i>	0 <i>0</i>	0 <i>0</i>	2,783 <i>451</i>	0 <i>0</i>	2,783 <i>451</i>
Chinook Salmon	0.0413	0 <i>0</i>	0 <i>0</i>	0 <i>0</i>	0 <i>0</i>	0 <i>0</i>	11,224 <i>1,181</i>	0 <i>0</i>	11,224 <i>1,181</i>
Rainbow Trout	0.0258	3,132 <i>525</i>	48 <i>12</i>	0 <i>0</i>	0 <i>0</i>	0 <i>0</i>	3,832 <i>331</i>	0 <i>0</i>	7,012 <i>621</i>
Brown Trout	0.0130	1,865 <i>1,003</i>	0 <i>0</i>	0 <i>0</i>	0 <i>0</i>	0 <i>0</i>	1,668 <i>88</i>	0 <i>0</i>	3,533 <i>1,007</i>
Brook Trout	0.0000	0 <i>0</i>	8 <i>0</i>	0 <i>0</i>	0 <i>0</i>	0 <i>0</i>	0 <i>0</i>	0 <i>0</i>	8 <i>0</i>
Lake Trout	0.0000	0 <i>0</i>	0 <i>0</i>	0 <i>0</i>	0 <i>0</i>	0 <i>0</i>	0 <i>0</i>	0 <i>0</i>	0 <i>0</i>
Northern Pike	0.0003	24 <i>24</i>	0 <i>0</i>	0 <i>0</i>	0 <i>0</i>	0 <i>0</i>	44 <i>28</i>	0 <i>0</i>	68 <i>37</i>
White Perch	0.0002	0 <i>0</i>	0 <i>0</i>	0 <i>0</i>	0 <i>0</i>	41 <i>39</i>	0 <i>0</i>	0 <i>0</i>	41 <i>39</i>
Smallmouth Bass	0.0007	0 <i>0</i>	78 <i>0</i>	0 <i>0</i>	82 <i>70</i>	41 <i>42</i>	0 <i>0</i>	0 <i>0</i>	201 <i>81</i>
Yellow Perch	0.0154	0 <i>0</i>	224 <i>112</i>	0 <i>0</i>	32 <i>29</i>	388 <i>296</i>	3,335 <i>1,169</i>	200 <i>164</i>	4,179 <i>1,222</i>
Walleye	0.0567	13,735 <i>4,940</i>	137 <i>76</i>	0 <i>0</i>	0 <i>0</i>	0 <i>0</i>	356 <i>171</i>	1,185 <i>827</i>	15,413 <i>5,012</i>
Total Harvest	0.1635	18,756 <i>5,068</i>	495 <i>136</i>	0 <i>0</i>	114 <i>76</i>	470 <i>301</i>	23,242 <i>1,764</i>	1,385 <i>843</i>	44,462 <i>5,442</i>
Angler Hours		131,485 <i>14,421</i>	19,933 <i>1,924</i>	8,631 <i>1,374</i>	6,004 <i>1,068</i>	7,189 <i>1,289</i>	96,347 <i>5,407</i>	2,401 <i>492</i>	271,990 <i>15,679</i>

Table 9. Average weight, average length and standard weight of salmonids from Wisconsin's Lake Michigan creel survey during 2012 through 2022, all areas and fishery types combined. std = standard deviation.

Year	Average Weight (lbs.)	± 1 Std	Average Length (in.)	± 1 Std	Standard Weight (lbs.)
Coho Salmon					
2012	3.4466	1.4930	20.6385	2.8135	3.8802
2013	5.3848	2.6743	23.6931	3.4848	4.0654
2014	3.9803	1.9275	21.2898	3.0179	3.9316
2015	4.0000	1.8299	21.4375	3.3676	3.8470
2016	4.7300	1.9033	23.3117	2.6028	3.9260
2017	4.0892	2.1177	22.4113	2.6747	3.6520
2018	4.7184	2.5656	22.0095	3.8256	4.2930
2019	6.5305	2.8447	23.3983	3.3888	4.4539
2021	3.6335	1.6999	20.8590	2.3806	4.2560
2022	6.4098	3.0389	24.8315	3.7971	4.4371
Chinook Salmon					
2012	10.2651	4.0305	30.0844	4.6550	8.8881
2013	10.4966	7.0121	28.1742	6.7792	10.2408
2014	11.3915	5.0015	30.0012	4.8944	10.2321
2015	10.4108	4.5165	29.7477	5.4302	9.1940
2016	10.3154	6.0139	28.1910	5.9369	10.3142
2017	11.8211	6.0754	29.6128	5.8775	10.4097
2018	13.1493	7.0864	30.6361	6.6760	10.0109
2019	13.0167	8.0081	29.9058	6.2441	10.9404
2021	11.5833	7.3158	28.7720	6.9710	10.6334
2022	11.9323	6.2615	29.4304	6.5854	9.5772
Rainbow Trout					
2012	6.3634	2.4765	26.1214	3.7593	4.2812
2013	6.4838	2.6676	25.5596	3.7736	4.0376
2014	6.7767	2.8838	25.9776	3.8120	4.1739
2015	5.7588	2.4129	25.2419	4.4224	3.9037
2016	5.8938	2.5324	24.7988	3.8542	4.2855
2017	6.5706	2.7022	25.8441	4.0113	4.0464
2018	6.4566	2.9929	25.6198	4.1660	3.7403
2019	7.8170	4.6551	25.1044	4.2576	4.3547
2021	6.8752	3.3082	25.3329	3.8655	4.4091
2022	6.6421	2.8727	24.8947	3.7643	4.5692
Brown Trout					
2012	4.7658	2.7347	20.7304	3.7789	4.0676
2013	5.8537	3.0350	22.0303	3.6793	3.9190
2014	5.8459	3.3608	21.2050	4.6428	4.2392
2015	5.1532	3.1955	20.9572	4.3664	3.8568
2016	5.3826	4.0422	20.7914	5.2190	3.9606
2017	5.7685	3.2424	21.9807	3.9553	3.9659
2018	6.1024	3.8362	22.9790	4.4280	3.4505
2019	10.7946	5.2367	25.5988	3.9499	5.4836
2021	7.3147	4.6425	23.2017	5.2133	3.9345
2022	5.2743	4.0971	22.0500	4.8082	3.2207
Lake Trout					
2012	6.7815	3.6110	26.1740	4.1798	5.3274
2013	5.8791	2.7630	25.0904	3.1524	5.3559
2014	6.3332	3.4466	24.7813	4.0396	5.8595
2015	7.4777	3.7718	26.8174	4.1894	5.6124
2016	6.6598	3.4108	25.7354	3.8402	5.8303
2017	6.7796	3.3955	25.8882	3.9219	5.6707
2018	8.4836	4.4129	27.2497	4.0781	6.0765
2019	10.1448	5.9126	27.3294	4.4485	6.3484
2021	7.4925	5.9333	25.1929	4.7050	5.8878
2022	7.8774	4.3128	25.8641	4.2673	6.2779

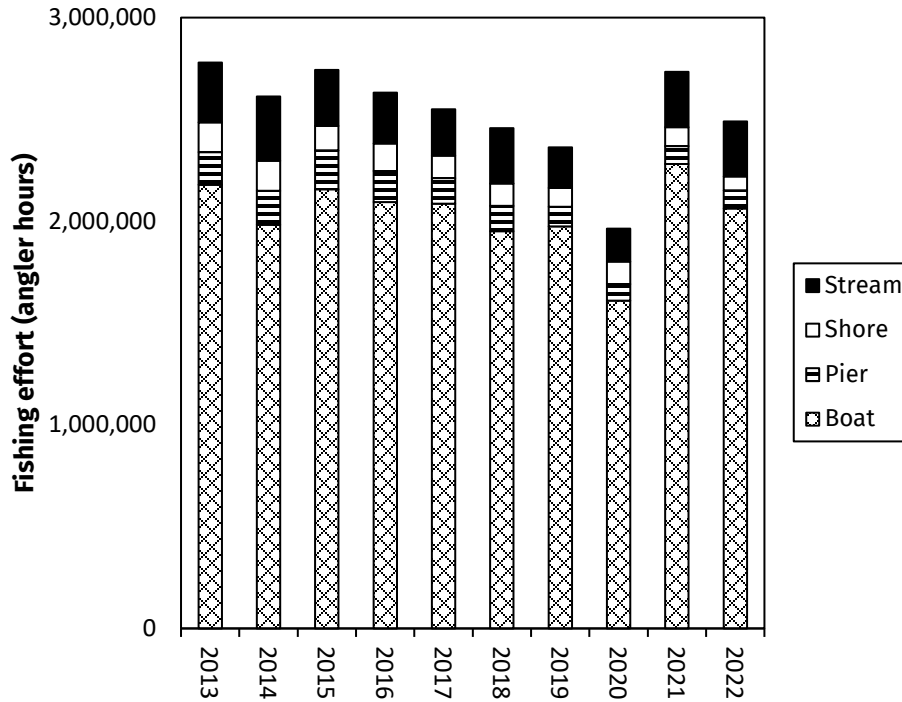


Figure 1. Fishing effort (angler hours) in Wisconsin waters of Lake Michigan and Green Bay from 2013 through 2022. *Note: Sport Fishing estimates for 2020 are for May – December only.

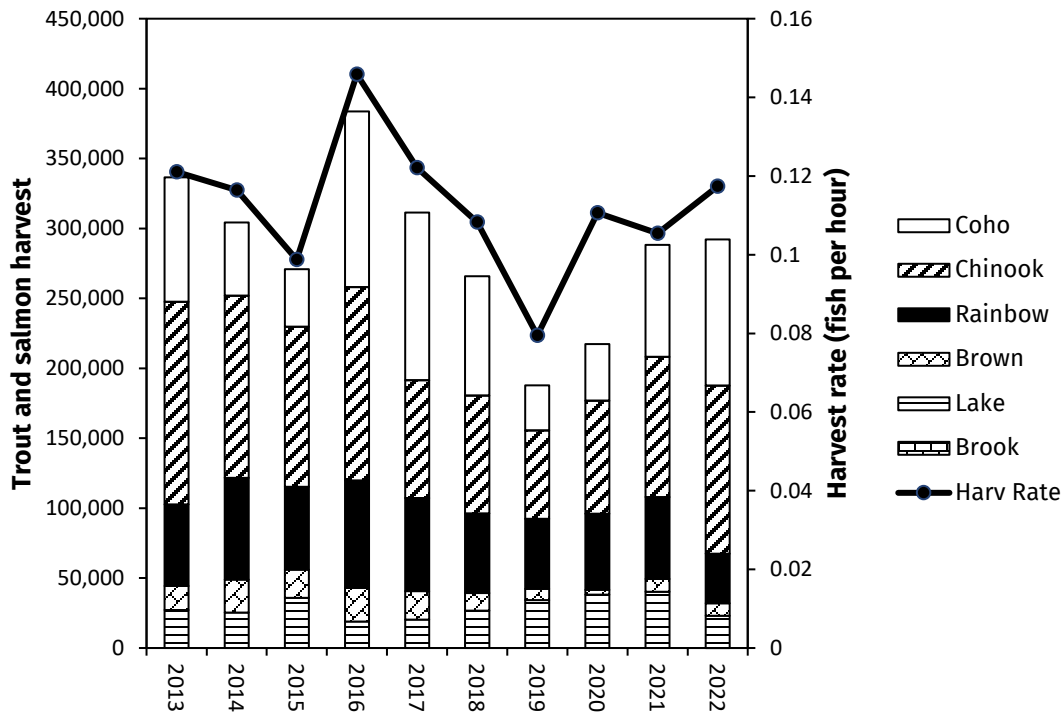


Figure 2. Trout and salmon harvest and harvest rate from Wisconsin waters of Lake Michigan and Green Bay from 2013 through 2022. *Note: Sport fishing estimates for 2020 are for May – December only.

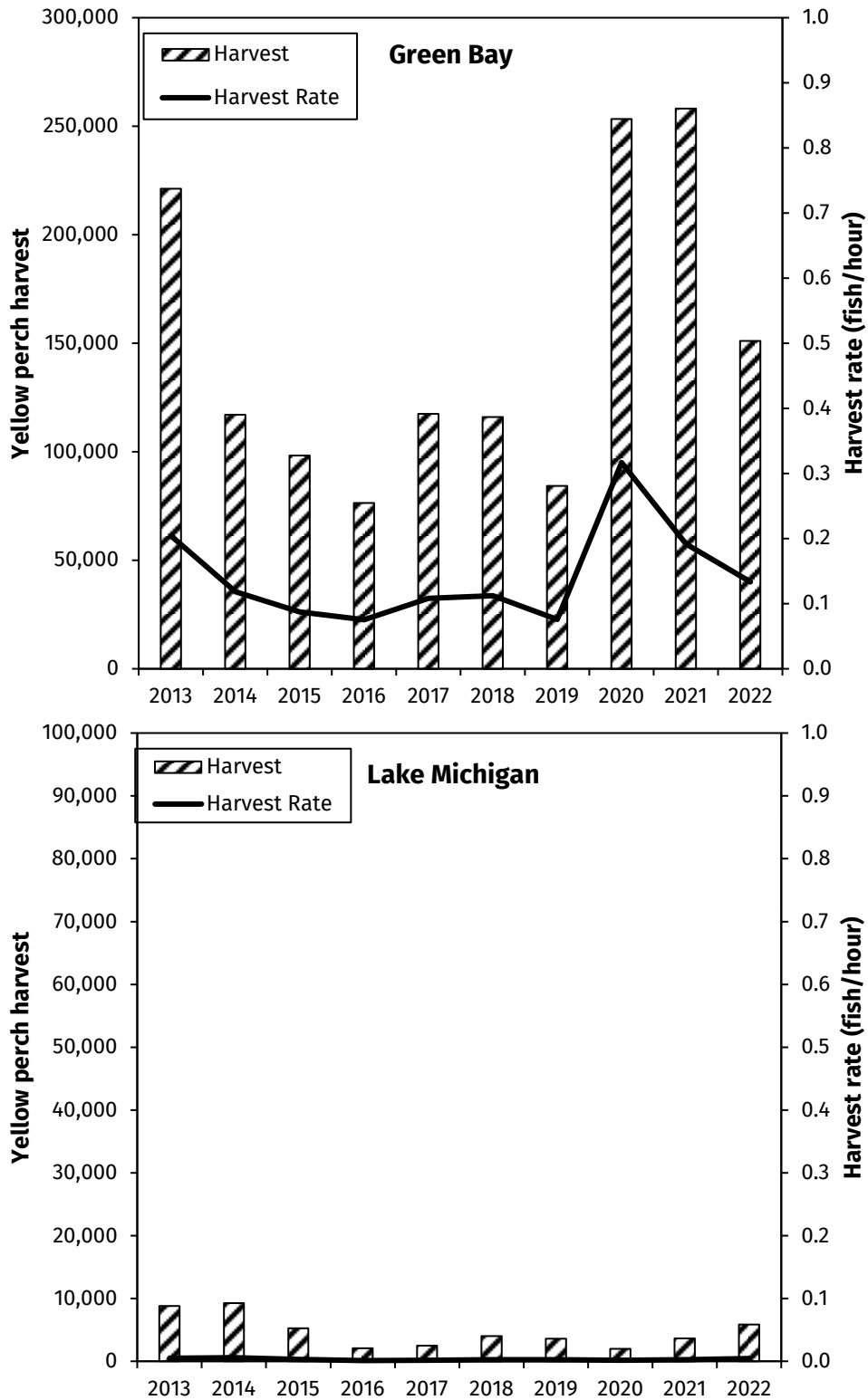


Figure 3. Yellow perch angler-harvest and harvest rate from Wisconsin waters of Green Bay and Lake Michigan from 2013 through 2022. Note: Figure 3 reflects that some Door County sites represent Green Bay for yellow perch harvest statistics. *Note: Sport fishing estimates for 2020 are for May – December only.