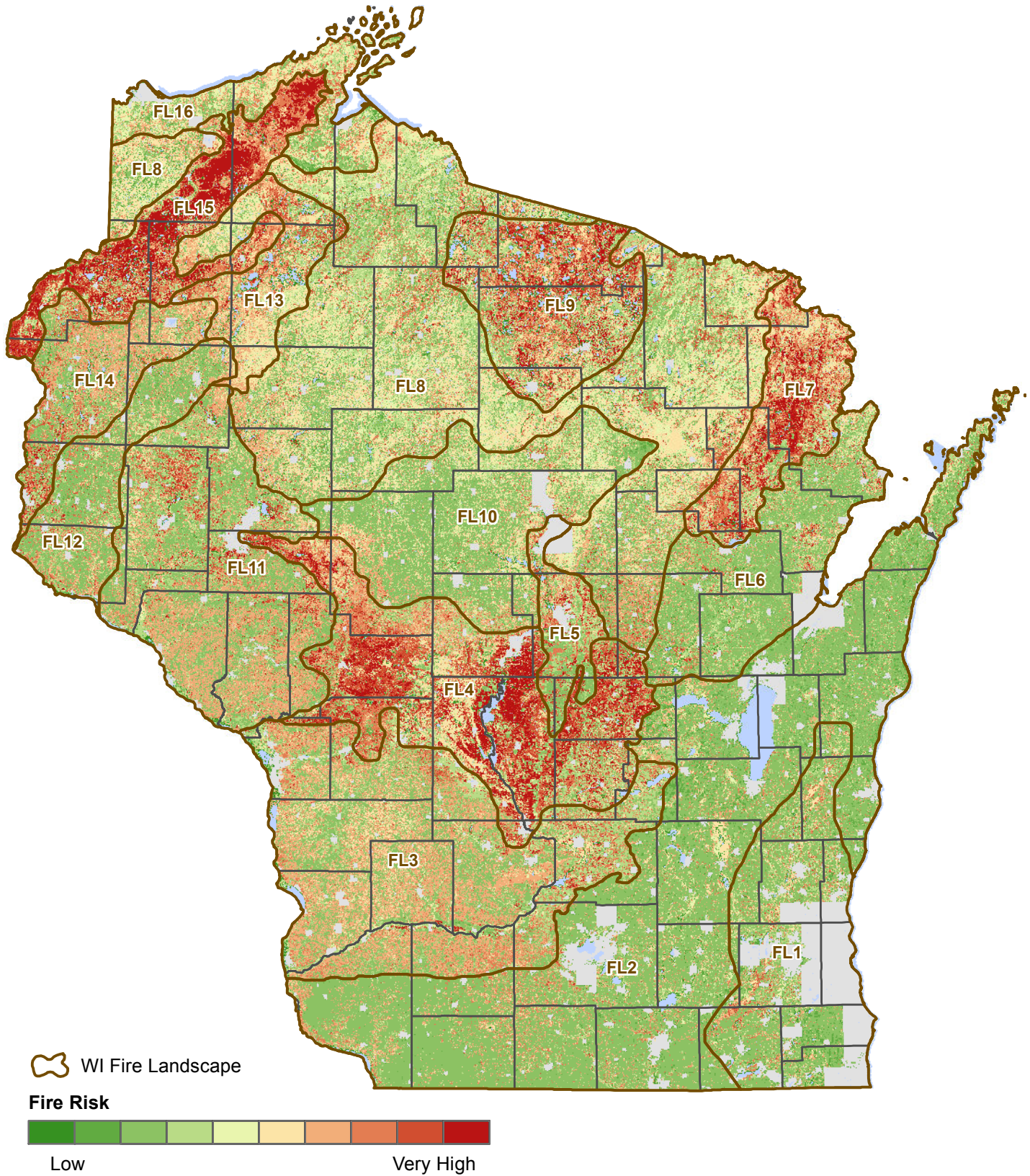


Wisconsin 2016 Fire Risk Analysis



The Department has made reasonable efforts to provide accurate information, but cannot exclude the possibility of errors or omissions in sources or of changes in actual conditions. The Department makes no warranties of any kind, either express or implied. Changes may be periodically made to the information herein – contact the originator of the data with any questions regarding appropriate use.