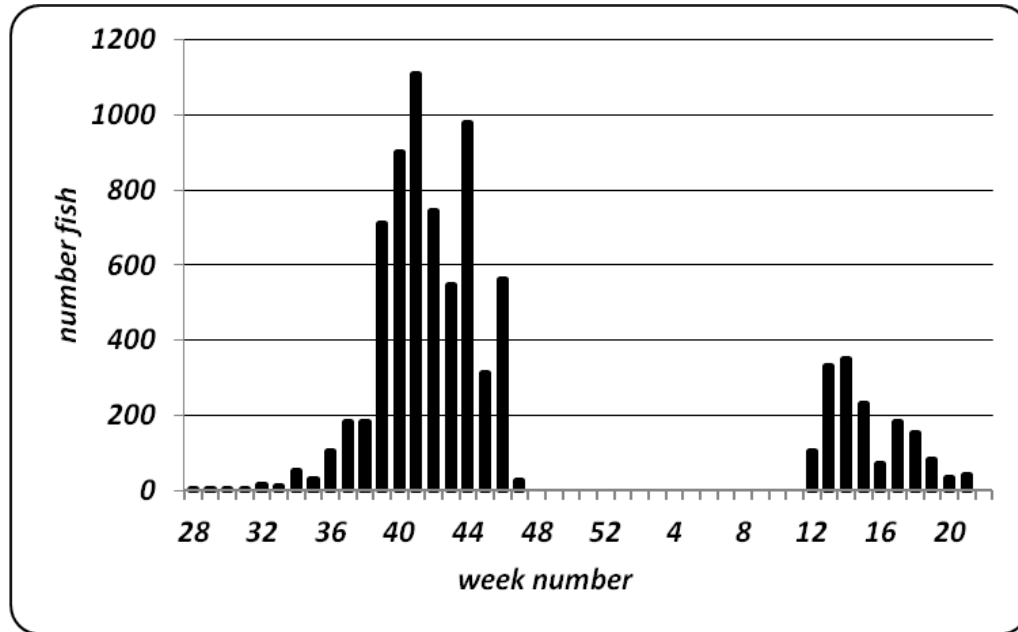


2010-2011 Brule River Steelhead Run



The graph above displays the 2010 –2011 weekly steelhead passage at the Brule River lamprey barrier/fish way. The fall peak occurred during the second week of October (week 41) while the spring peak took place from March 27 through April 9 (weeks 13 & 14). The run was dominated by large, older fish with greater than 50% of fish six years of age or older. As further evidence of the predominance of older fish, the run contained a high percentage (48%) of legal fish and 62% repeat spawners. This higher percentage of older fish was also due to the fact that some younger age groups have poor year classes.

The table below displays recent run totals. The run this year totaled 8,072 wild fish, which included 6,488 from the fall run and 1,584 that ascended in the spring. This was the first year since we concluded our wild steelhead stocking experiment (2001) that no hatchery origin fish were represented. The youngest stocked fish are now 10 years old which is about the maximum age for a Brule steelhead. However, the wild population remains at a healthy level and continues to provide a quality fishery.

	FALL	SPRING	TOTAL	WILD PORTION
2004-05	<i>7635</i>	<i>1445</i>	<i>9080</i>	<i>7382</i>
2005-06	<i>9260</i>	<i>990</i>	<i>10250</i>	<i>8759</i>
2006-07	<i>7290</i>	<i>1582</i>	<i>8872</i>	<i>8162</i>
2007-08	<i>6345</i>	<i>1215</i>	<i>7560</i>	<i>7282</i>
2008-09	<i>6640</i>	<i>1096</i>	<i>7736</i>	<i>7599</i>
2009-10	<i>8130</i>	<i>761</i>	<i>8891</i>	<i>8795</i>
2010-11	<i>6488</i>	<i>1584</i>	<i>8072</i>	<i>8072</i>