

Large Mesh Gill Net Study Proposal Lake Michigan Zone 3

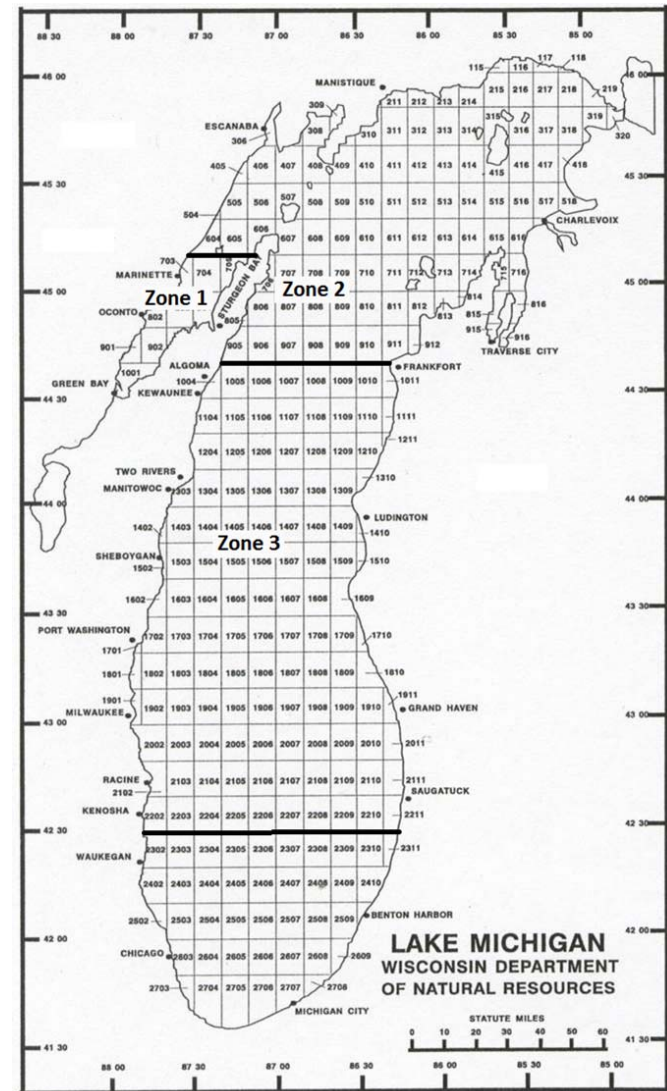
Brad Eggold and Todd Kalish
WDNR Fisheries Bureau
LMCFB Meeting, 12/5/2017

Timeline

- October and November, 2017: Commercial fishers and DNR meetings
- November 28: Press release
- December 5: Lake Michigan Commercial Fishing Board meeting
- December 7: Lake Michigan Fisheries Forum meeting
- Mid-December: Discuss comments

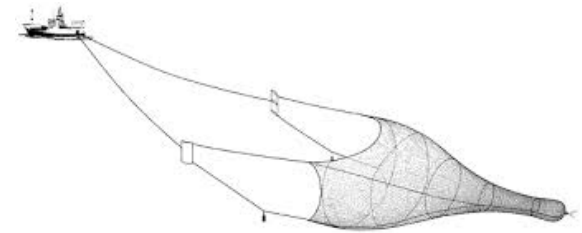
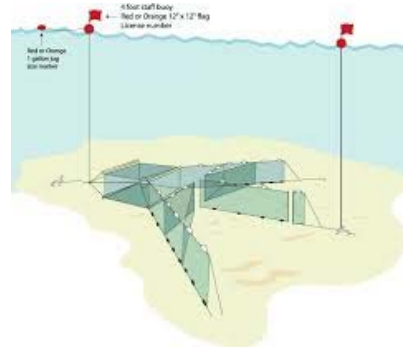
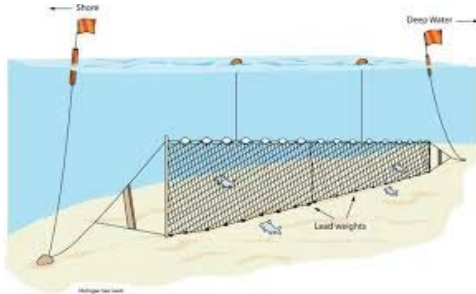
History

- Three management zones
- Lake Whitefish primary commercial fishery
- Trap nets are primary gear
- Large mesh gill nets (LMGN) are used in zones 1 and 2
- LMGN exclusion zone created in 1970 (south of Bailey's Harbor)
- Issues with inability to use gill nets in zone 3

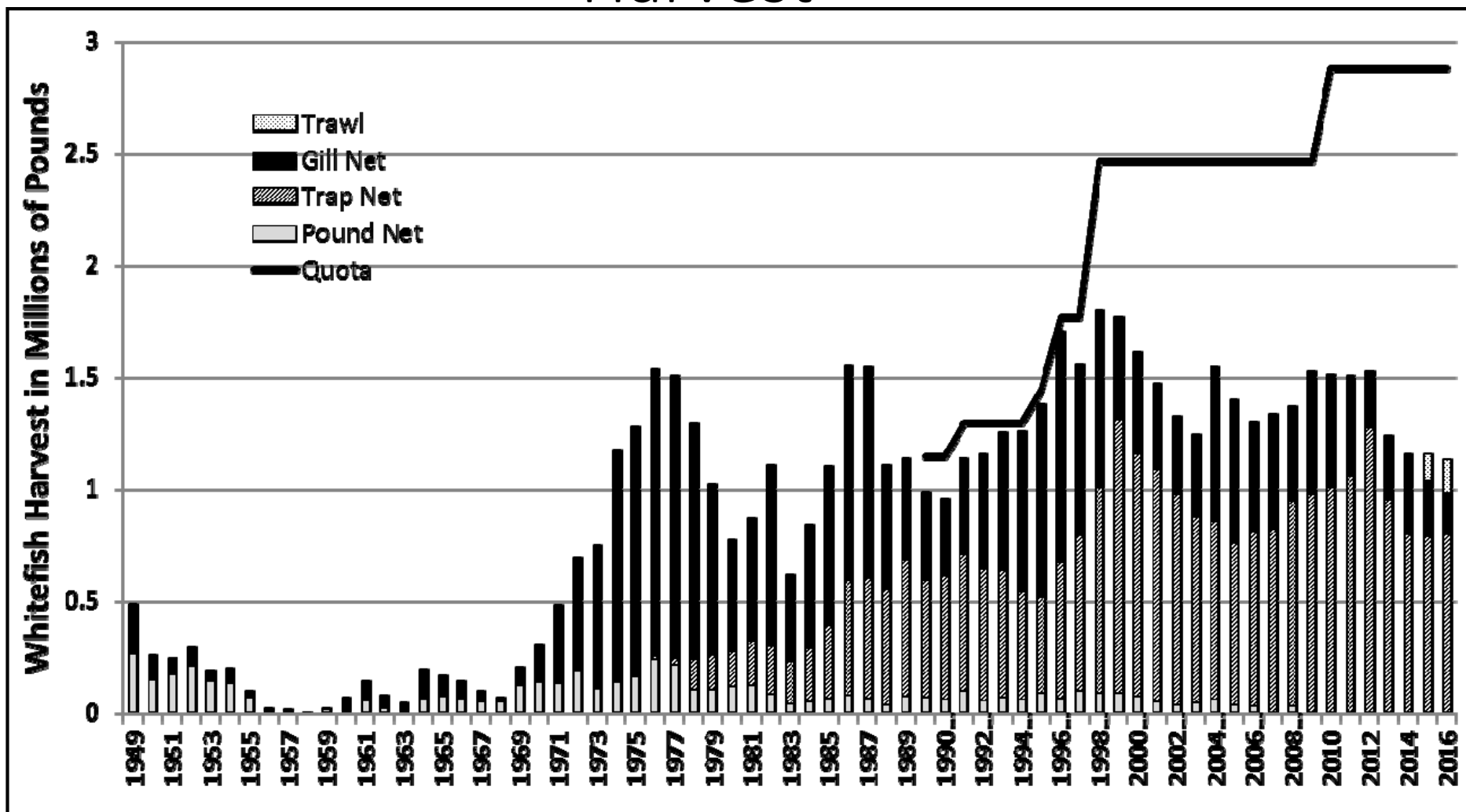


Study Purpose

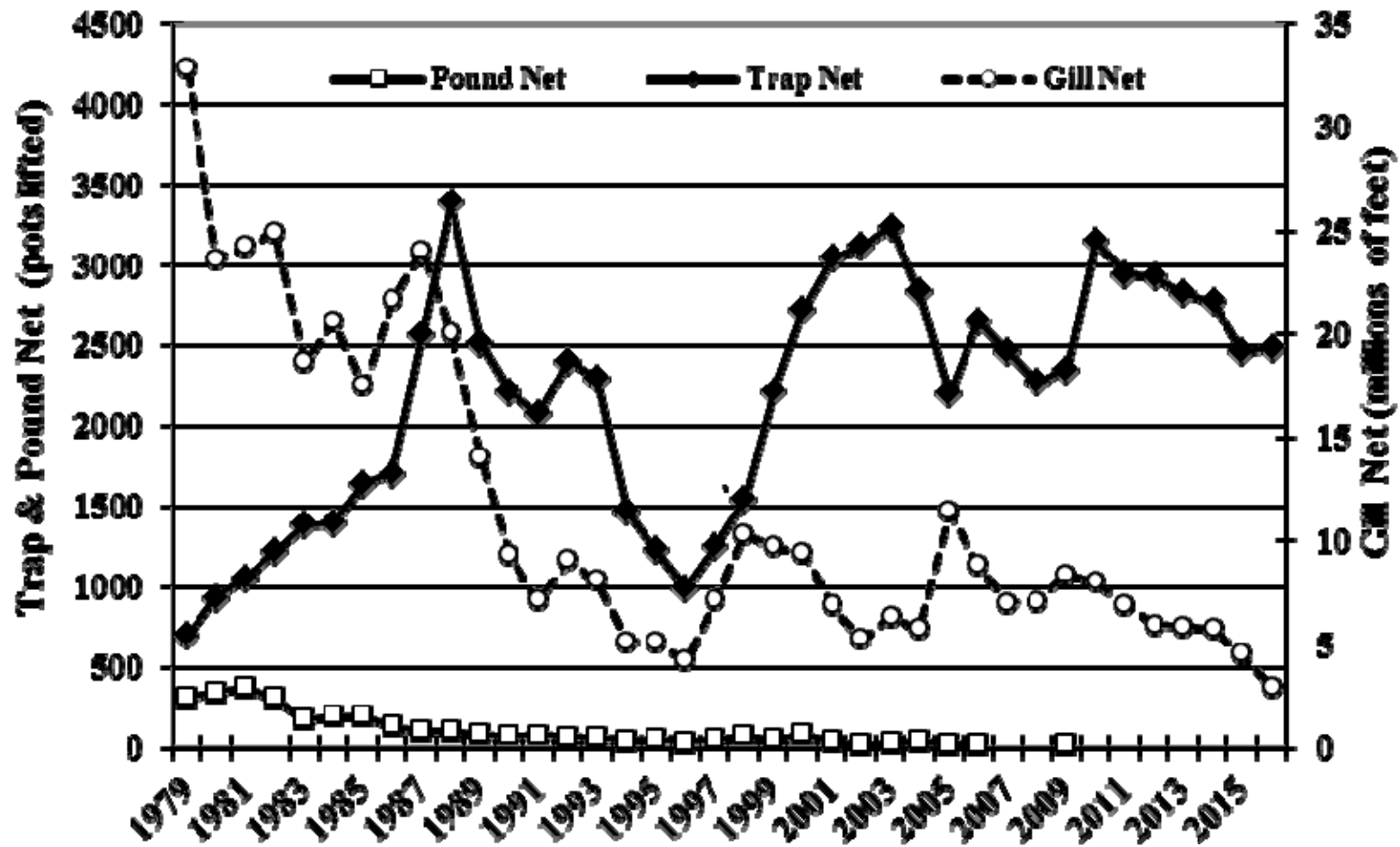
- Increase knowledge of LMGN operations and provide appropriate options to promote and sustain viable and stable recreational and commercial fisheries.



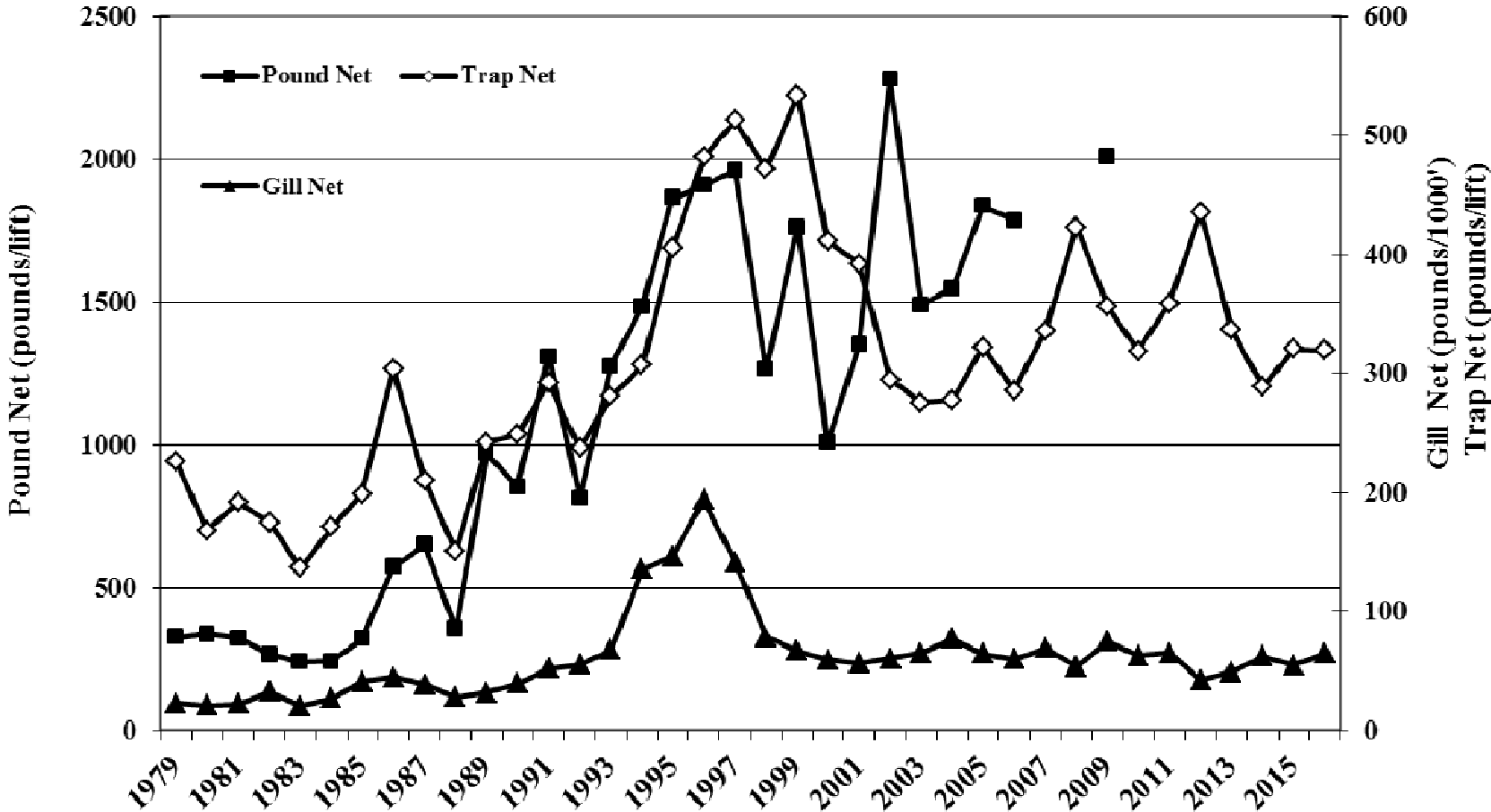
Harvest



Effort



Catch Per Unit effort



General Study Parameters

- Two-year study
- Allow LMGN nets south of Bailey's Harbor
- Quantify whitefish harvest and bycatch rates
- Study would be adaptive and adjusted as new information is gathered

Study Specifics

- Dec. 1-Oct. 31
- Commercial fisher nets and experimental nets
- Stratified sampling locations
- Onboard monitoring and camera
- Quarterly reporting

Questions and Comments

DNRLAKEMICHIGANPLAN@WISCONSIN.GOV

Brad Eggold: 414-382-7921

Todd Kalish: 608-266-5285