

CONSULTANTS' DAY 2015

20th Anniversary

DNR's
Remediation
& Redevelopment
Program

Post Closure Modifications and Reopeners

Pam Mylotta
Southeast Region Team Supervisor
Wisconsin DNR



Hosted by DNR's
Remediation & Redevelopment Program



Key Points



- What is a post closure modification
- Legal authority
- When to submit a request
- Fees
- Process
- Reopening Sites



Post Closure Modifications



- Post Closure Requests:
Submit for sites where an action will result in changes that would affect a continuing obligation, including residual contamination



Post Closure Modifications



- Required vs. Voluntary Notifications
 - Required under NR 727.07 or in closure letter – 45 days prior
 - Otherwise voluntary, but recommended



Post Closure Modifications



Post Closure Modifications



- FEES (per site)
 - \$1050
 - \$300 (Soil)
 - \$350 (GW or MW)



Post Closure Modifications



- Process
 - Submit request with fees(form)
 - *Notice to proceed*
 - Take the approved actions
 - Submit documentation
 - *Addendum to closure letter*



Post Closure Modifications



Technical Assistance, Environmental Liability
Clarification or Post-Closure Modification Request
(Form 4400-237)

<http://dnr.wi.gov/files/PDF/forms/4400/4400-237.pdf>

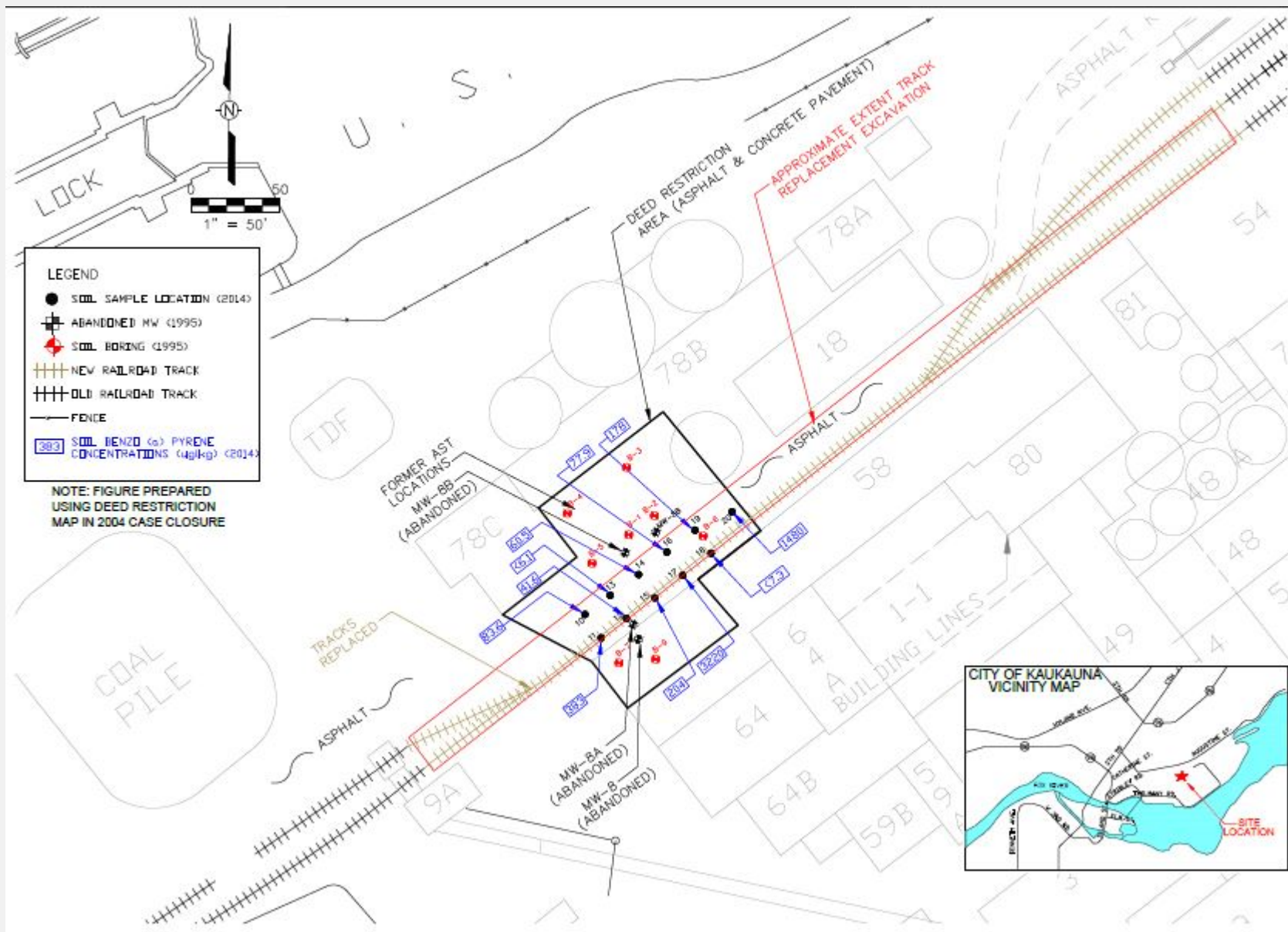
Post-Closure Modifications [181] - NR 727

- Post-Closure Modifications:** Modification to or removal of a site or property from the GIS Registry (this includes modifications to continuing obligations and/or modifications to property boundaries). **Include a fee of \$1050, and:**
 - Include a fee of \$300 for sites with residual soil contamination; and
 - Include a fee of \$350 for sites with residual groundwater contamination, monitoring wells or for vapor intrusion continuing obligations.

Attach a description of the changes you are proposing, and documentation as to why the changes are needed (if the change to a property, site or continuing obligation will result in revised maps, maintenance plans or photographs, those documents may be submitted later in the approval process, on a case-by-case basis).

Post Closure Modifications





Post Closure Modifications



Reopeners



Reopeners: NR 727.13 criteria

- Risk to health, safety, welfare or to the environment
- Noncompliance with continuing obligations
- By request



Reopeners



Same Fees as modifications

Different process:

- Investigation
- Remedial action
- Closure request/approval



Post Closure Modifications



Pending guidance

- RR 982: Post Closure Modifications and Reopening Sites



Post Closure Modifications



PCM: Actions affecting CO,
including residual contamination

- Fees: \$1050 + \$300* + \$350*
- Addendum to closure letter

Reopeners: same fees, different
process. New closure letter.



Post Closure Modifications



Fees

Voluntary PCM	Required PCM	Reopener
\$1050	\$1050	\$1050
\$300	\$300	\$300
\$350	\$350	\$350



Summary of Key Points



- Legal authority
- When to submit a request
- Fees
- Process
- Reopening Sites



Questions & Contacts

Pam Mylotta

Southeast Region Team Supervisor

Pamela.Mylotta@wisconsin.gov

414-263-8561



**Thank you for attending
Consultants' Day**

